

CERTIFICATE OF LOCATION OF GOVERNMENT CORNER

NORTH QUARTER Corner of Section 35, Township 40, Range 23, 4TH P.M.

STATE OF MINNESOTA, County of KANABEC

At the corner location shown on the sketch:

FOUND SPIKE IN ROAD
AND ESTABLISHED G.P.S. COORDINATES ON ITS LOCATION

Kanabec County U.S. Survey Feet Coordinates
NAD 1983, HARN 1996 Adjustment
Obtained by RTK GPS Observation

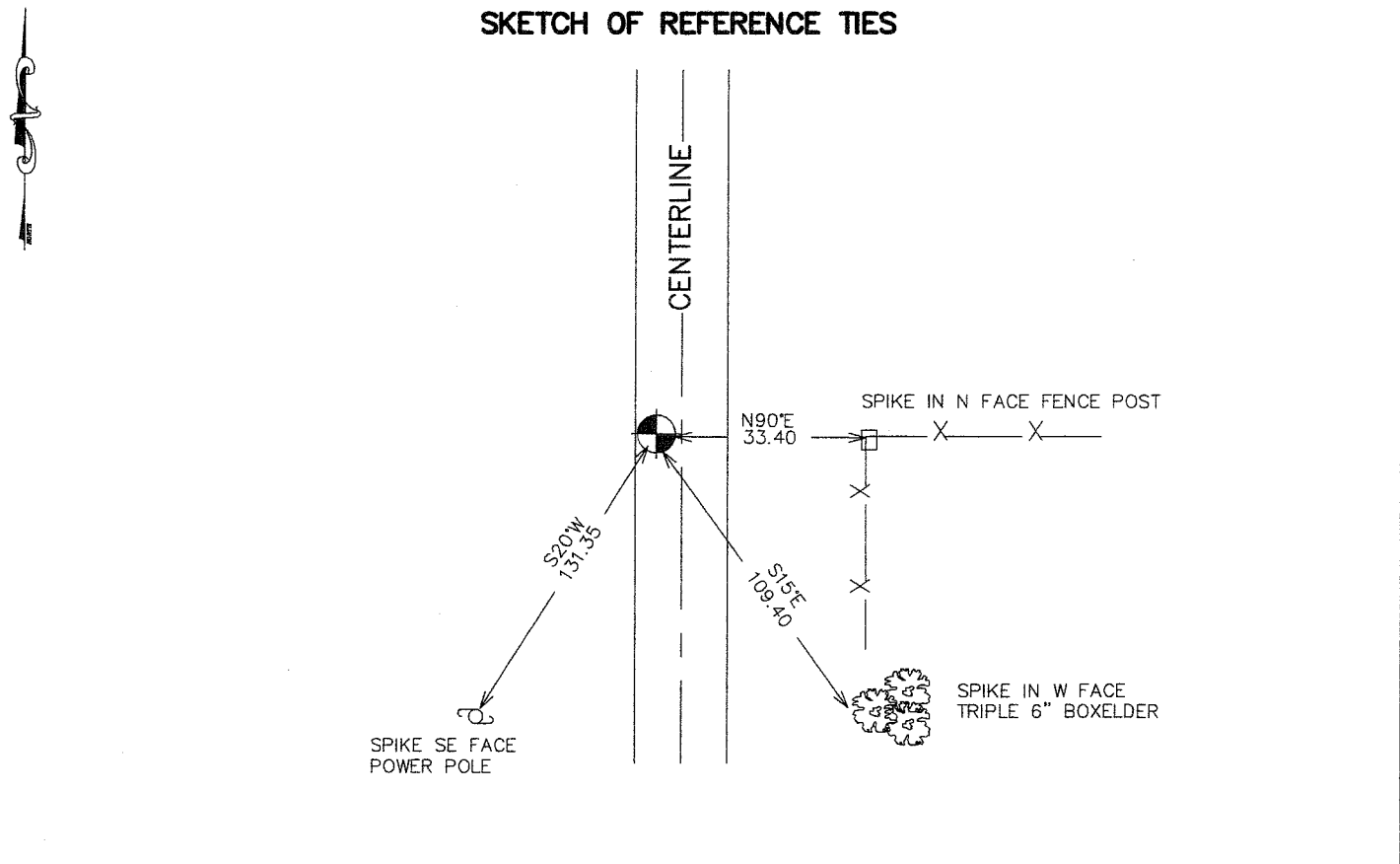
Northing= 169201.404

Easting= 430352.701

Note: NAD 1983, HARN 1996 Adjustment
coordinates are NOT compatible with
NAD 1983 coordinates

Note: 1 Meter=3937/1200 U.S. Survey Feet

SKETCH OF REFERENCE TIES



Statement of evidence relative to this corner location is on back of page.

I hereby certify that this document and the data contained herein was prepared by me or under my direct supervision.

Ernest J. Bud
Signature

5-01-2007
Date

Registration No. Minn No 9808

- Land Surveyor, Professional Engineer
 County Surveyor, County Engineer

OFFICE OF THE COUNTY RECORDER

County of _____

I hereby certify that this document was filed in the County Recorder's office at _____ M. on the _____ day of _____ A.D., 20____

County Recorder _____

BY _____ Deputy

DOCUMENT NO. _____

NORTH QUARTER CORNER SECTION 35, T40, R23

STATEMENT OF EVIDENCE

THE ORIGINAL CORNER WAS SET BY DEPUTY SURVEYOR JOHN M. GLEY ON SEPTEMBER 30, 1851 AND TWO BEARING TREES WERE ESTABLISHED. ANY VISIBLE EVIDENCE FOR THE CORNER OR BEARING TREES NO LONGER REMAIN.

ON PAGE 313 BOOK 1 OF #2 BOOKS THERE SHOWS A SURVEY DONE FROM THE NORTH QUARTER OF SECTION 26 TO THE CENTER OF SECTION 35. A GOVERNMENT WITNESS IS SHOWN AT THE NORTH QUARTER OF SECTION 35, NO ROAD OPENINGS COULD BE FOUND AT THE COUNTY AUDITORS OFFICE. IN 1990 M.B. RUDE MADE A SURVEY AROUND SECTION 35, AND SET A POSITION ON THIS CORNER.

IN FEBRUARY 2007 E.G. RUD AND SONS RAN A SURVEY AROUND SECTION 35 AND FOUND A SPIKE IN THE BITUMINOUS ROADWAY AT A FENCE LINE RUNNING EAST. THIS SPIKE IS WITHIN 0.12 OF A FOOT FROM WHERE M.B. RUDE HAD POSITIONED HIS CORNER.

E.G. RUD ESTABLISHED KANABEC COUNTY COORDINATES ON THIS LOCATION AND TOOK NEW TIES.