

# CERTIFICATE OF LOCATION OF GOVERNMENT CORNER

E. 1/4 Corner of Section 34, Township 40, Range 23, 4<sup>TH</sup> P.M.  
STATE OF MINNESOTA, County of KANABEC

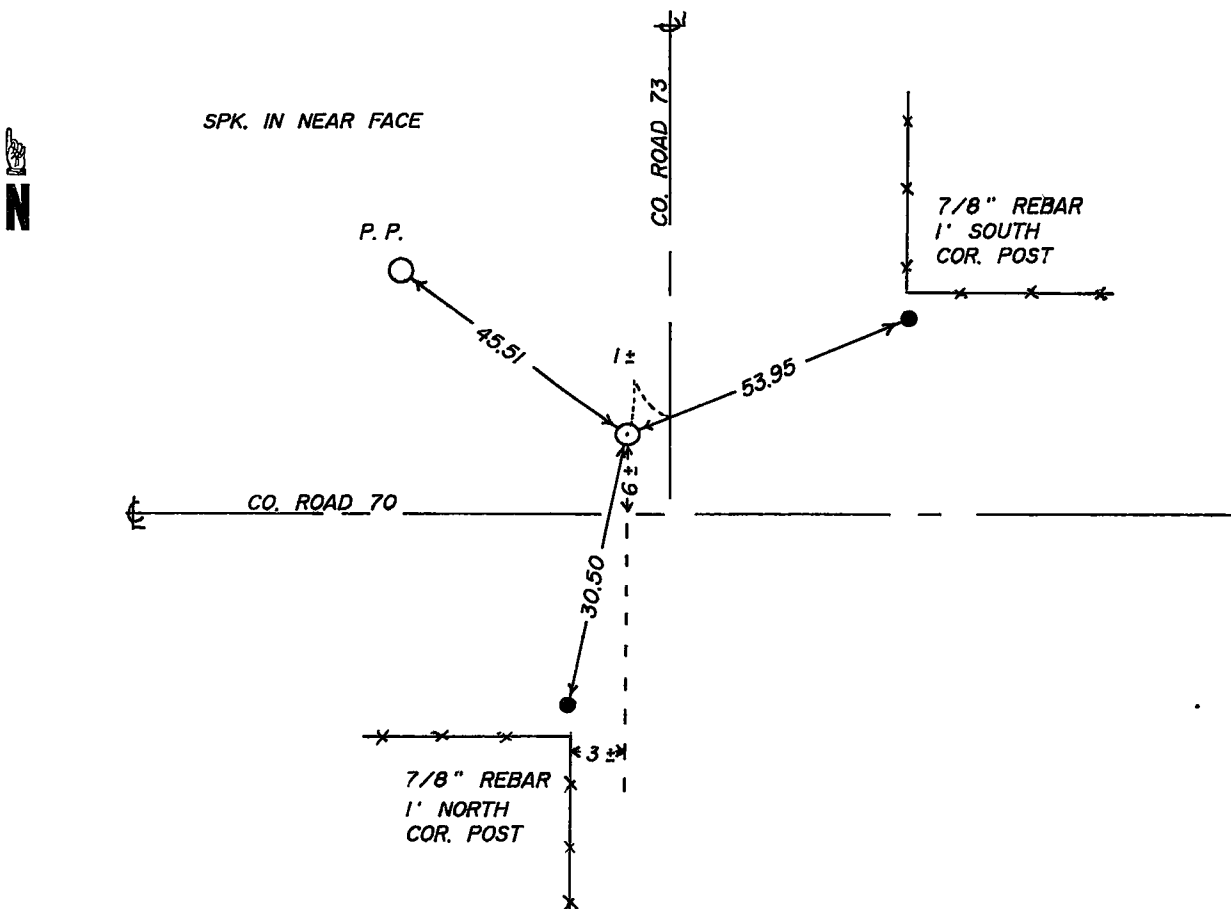
At the corner location shown on the sketch

On 7/10/90 found a SANDSTONE MARKED + 2' BELOW ROAD SURFACE

left monument as found,  lowered monument,  removed monument (explain)

On 7/10/90 placed a 7/8" X 36" CAPPED REBAR

### SKETCH OF REFERENCE TIES



Statement of evidence relative to this corner location is on back of page.

I hereby certify that this document and the data contained herein was prepared by me or under my direct supervision.

[Signature] 8-3-90  
Signature Date

Registration No. 8195

Land Surveyor,  Professional Engineer  
 County Surveyor,  County Engineer

County Recorder  
OFFICE OF THE REGISTER OF DEEDS

County of Kanabec

I hereby certify that this document was filed in the Register of Deeds office at 2:30 P.M. on the

30 day of August A.D., 1990

County Recorder  
Register of Deeds Velma J. Besser

By \_\_\_\_\_, Deputy

DOCUMENT NO. \_\_\_\_\_

## STATEMENT OF EVIDENCE

All of the original government bearing trees are now gone.

On June 26, 1990, we made a survey around Section 34, Township 40, Range 23, to locate existing monuments, lines of occupation and to establish search areas.

On July 9, 1990, we made a 3 foot by 15 foot by 20 foot excavation with a backhoe, about 6" below the natural ground at the center line road intersection and found a 4" by 12" by 16" sandstone marked with a "+".

The sandstone monument was accepted as the perpetuated location of this corner.