

# CERTIFICATE OF LOCATION OF GOVERNMENT CORNER

NORTHEAST Corner of Section 11, Township 40, Range 23, 4TH P.M.

STATE OF MINNESOTA, County of KANABEC

At the corner location shown on the sketch:  
 SET # 7 REBAR WITH ALUMINUM CAP  
 AND ESTABLISHED G.P.S. COORDINATES ON ITS LOCATION.

Kanabec County U.S. Survey Feet Coordinates  
 NAD 1983, HARN 1996 Adjustment  
 Obtained by RTK GPS Observation

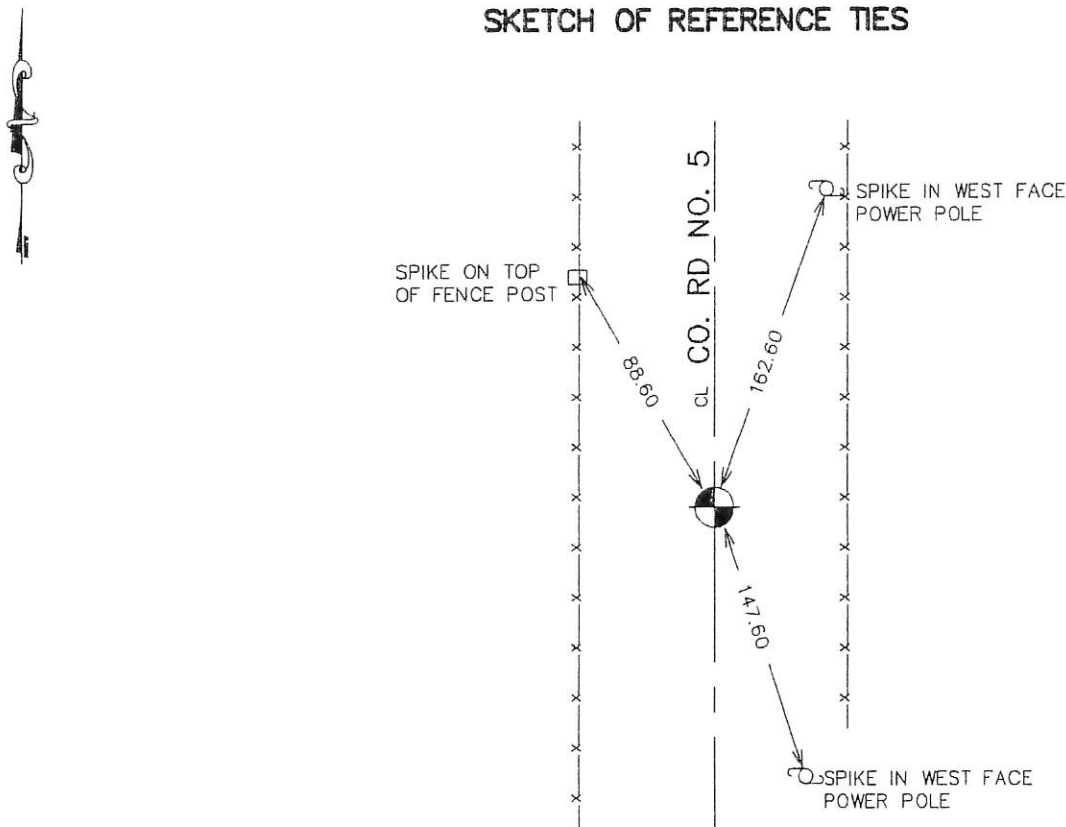
Northing= 190379.22

Easting= 433003.84

Note: NAD 1983, HARN 1996 Adjustment  
 coordinates are NOT compatible with  
 NAD 1983 coordinates

Note: 1 Meter=3937/1200 U.S. Survey Feet

### SKETCH OF REFERENCE TIES



Statement of evidence relative to this corner location is on back of page.

I hereby certify that this document and the data contained herein was prepared by me or under my direct supervision.

Ernest L. Rud  
 Signature

9-11-2006  
 Date

Registration No. Minn No 9808

Land Surveyor,       Professional Engineer

County Surveyor,       County Engineer

### OFFICE OF THE COUNTY RECORDER

County of \_\_\_\_\_

I hereby certify that this document was filed in the County Recorder's office at \_\_\_\_\_ M. on the \_\_\_\_\_ day of \_\_\_\_\_ A.D., 20\_\_

County Recorder \_\_\_\_\_

BY \_\_\_\_\_ Deputy

DOCUMENT NO. \_\_\_\_\_

## NORTHEAST CORNER SECTION 11, T40, R23

### STATEMENT OF EVIDENCE

THE ORIGINAL CORNER WAS SET BY DEPUTY SURVEYOR JOHN M. GLEY ON SEPTEMBER 29, 1851. TWO SPRUCE TREES WERE NOTED AS BEARING TREES. BEARING TREES AND GOVERNMENT CORNER NO LONGER REMAIN,

ON JUNE 14, 1903 JOHN NELSON RAN A SURVEY FROM THE SOUTHEAST CORNER OF SECTION 14 TO THE NORTHEAST CORNER OF SECTION 11 AND RECORDED DISTANCES OF 81 CHAINS ON EACH MILE. 81 CHAINS = 5346 FEET. E.G. RUD MEASURED 5338.6 FEET FROM THE SOUTHEAST CORNER OF SECTION 14 TO THE NORTHEAST CORNER OF SECTION 14. WE DOUBLED THIS DISTANCE OVER TO DETERMINE A SEARCH AREA. THIS CORNER FALLS ON THE CENTERLINE ~~CENTERLINE~~ OF COUNTY ROAD 5 BUT NO OCCUPATION LINES RUN EITHER WEST OR EAST IN THIS AREA.

ON JULY 25, 2006 AN EXCAVATION WAS MADE ON THE CENTERLINE OF COUNTY ROAD # 5 AND AT THE DOUBLED OVER DISTANCE. THE EXCAVATION WAS 10 FEET WIDE BY 20 FEET LONG AND 1 FOOT INTO NATURAL GROUND. WE DID NOT FIND ANY EVIDENCE FOR THE PERPETUATION OF THE CORNER SO WE SET THIS CORNER ON THE CENTERLINE OF COUNTY ROAD NO. 5 AND AT THE DOUBLED OVER DISTANCE ALONG THE EAST LINE OF SECTION 14.

WE SET A # 7 REBAR WITH ALUMINUM CAP, TOOK TIES AND ESTABLISHED KANABEC COUNTY COORDINATES ON THIS POSITION.