

CERTIFICATE OF LOCATION OF GOVERNMENT CORNER

EAST QUARTER Corner of Section 11, Township 40, Range 23, 4TH P.M.

STATE OF MINNESOTA, County of KANABEC

At the corner location shown on the sketch:
SET # 7 REBAR WITH ALUMINUM CAP
AND ESTABLISHED G.P.S. COORDINATES ON ITS LOCATION.

Kanabec County U.S. Survey Feet Coordinates
NAD 1983, HARN 1996 Adjustment
Obtained by RTK GPS Observation

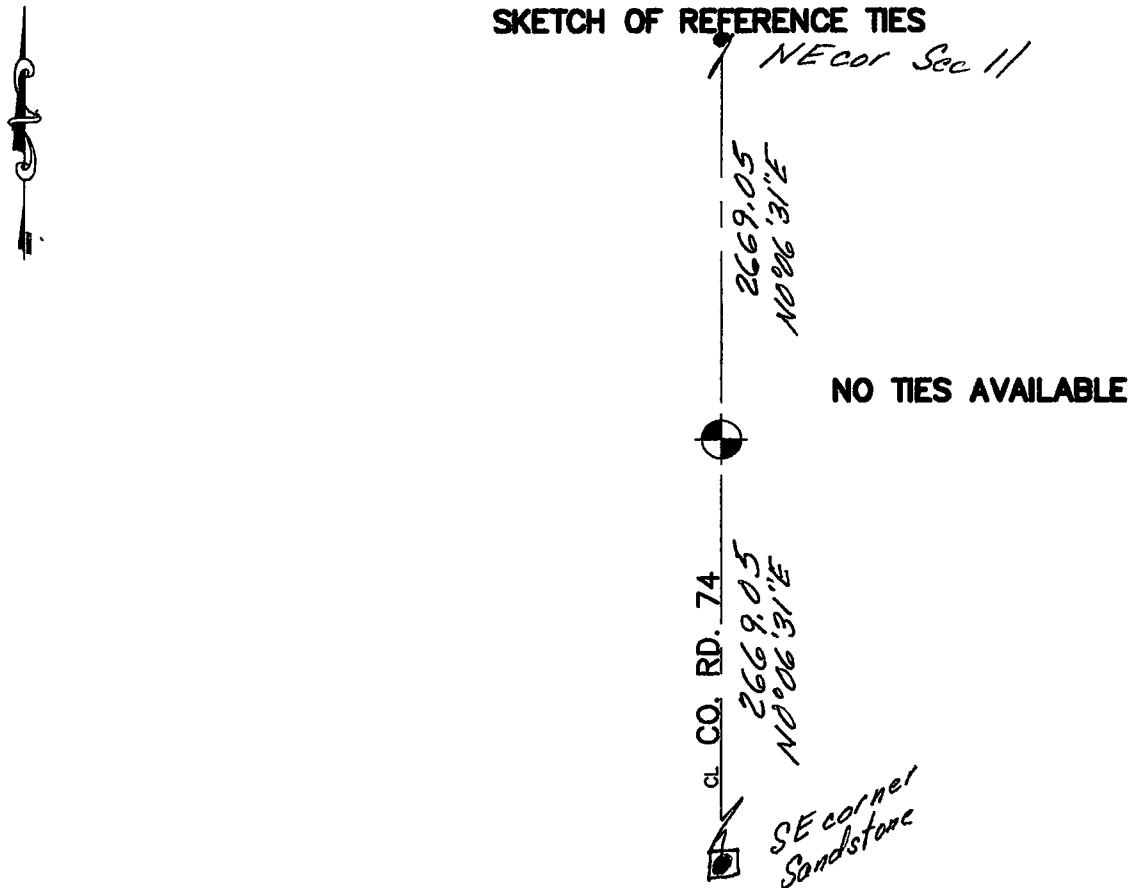
Northing= 187710.18

Easting= 432998.78

Note: NAD 1983, HARN 1996 Adjustment
coordinates are NOT compatible with
NAD 1983 coordinates

Note: 1 Meter=3937/1200 U.S. Survey Feet

SKETCH OF REFERENCE TIES



Statement of evidence relative to this corner location is on back of page.

I hereby certify that this document and the data contained herein was prepared by me or under my direct supervision.

Ernest Lund 9-11-2006
Signature Date

Registration No. Minn No 9808

- Land Surveyor, Professional Engineer
- County Surveyor, County Engineer

OFFICE OF THE COUNTY RECORDER

County of Kanabec

I hereby certify that this document was filed in the County Recorder's office at 8:00 A.M. on the

13th day of Sept A.D., 2006

County Recorder Rhonda Olson

BY _____ Deputy

DOCUMENT NO. _____

EAST QUARTER CORNER SECTION 11, T40, R23

STATEMENT OF EVIDENCE

THE ORIGINAL CORNER WAS SET BY DEPUTY SURVEYOR JOHN M. GLEY ON SEPTEMBER 29, 1851.

TWO TAMRACK TREES WERE NOTED AS BEARING TREES. CORNER AND BEARING TREES NO LONGER REMAIN.

ON JUNE 14, 1903 JOHN NELSON RAN A SURVEY FROM THE SOUTHEAST CORNER OF SECTION 14 TO THE NORTHEAST CORNER OF SECTION 11 AND RECORDED DISTANCES OF 81 CHAINS ON EAST LINES OF SECTION 11 AND 14. JOHN NELSON ALSO NOTED HE SET SANDSTONE WITH CHISELED X AT SECTION AND QUARTER CORNERS.

IN MAY 2006 E.G. RUD AND SONS SURVEYED AROUND SECTIONS 1, 2, 11, 12, 13 AND 14 TO LOCATE MONUMENTATION AND LINES OF OCCUPATION. THIS CORNER FALLS ON THE CENTERLINE OF COUNTY ROAD 5 AND THERE ARE NO LINES OF OCCUPATION RUNNING EAST OR WEST.

ON JULY 25, 2006 AN EXCAVATION WAS MADE ON THE CENTERLINE OF CO. RD. 5 AND AT A DOUBLED OVER DISTANCE FROM THE SOUTHEAST CORNER OF SECTION 11 WHERE A SANDSTONE WAS FOUND TO THE SOUTHEAST CORNER OF 11.

THE EXCAVATION WAS 10 FEET WIDE 20 FEET LONG AND 1 FOOT DEEP INTO NATURAL GROUND. 3 FLAT ROCKS WERE FOUND BUT NONE WERE SANDSTONE WITH X'S CHISELED ON THEM. AT THE DOUBLED OVER DISTANCE A 5" BY 16" WOOD STAKE WITH AN AX SHARPENED END WAS FOUND. THIS POSSIBLY COULD HAVE BEEN THE ORIGINAL CORNER.

WE SET THE CORNER EQUIDISTANT AND ON LINE BETWEEN THE NORTHEAST AND SOUTHEAST CORNERS OF SECTION 11. KANABEC COUNTY COORDINATES WERE ESTABLISHED USING G.P.S. EQUIPMENT.