

CERTIFICATE OF LOCATION OF GOVERNMENT CORNER

NORTHEAST Corner of Section 14, Township 40, Range 23, 4TH P.M.

STATE OF MINNESOTA, County of KANABEC

At the corner location shown on the sketch:
SET 1/2 INCH IRON PIPE
AND ESTABLISHED G.P.S. COORDINATES ON ITS LOCATION.

Kanabec County U.S. Survey Feet Coordinates
NAD 1983, HARN 1996 Adjustment
Obtained by RTK GPS Observation

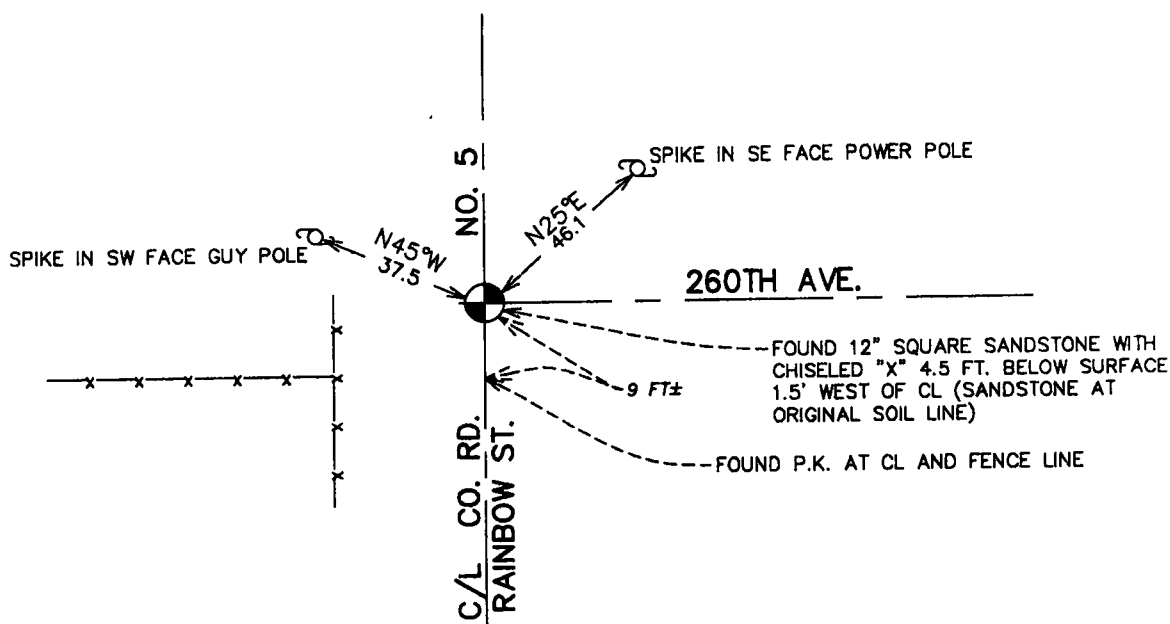
Northing= 185041.13

Easting= 432993.72

Note: NAD 1983, HARN 1996 Adjustment
coordinates are NOT compatible with
NAD 1983 coordinates

Note: 1 Meter=3937/1200 U.S. Survey Feet

SKETCH OF REFERENCE TIES



Statement of evidence relative to this corner location is on back of page.

I hereby certify that this document and the data contained herein was prepared by me or under my direct supervision.

Ernest J. Rud Signature 8-22-2006 Date

Registration No. Minn No 9808

Land Surveyor, Professional Engineer

County Surveyor, County Engineer

OFFICE OF THE COUNTY RECORDER

County of Kanabec

I hereby certify that this document was filed in the County Recorder's office at 10:00 A.M. on the

23rd day of August A.D., 2006

County Recorder Rhonda A Olson

BY _____ Deputy

DOCUMENT NO. _____

NORTHEAST CORNER SECTION 14, T40, R23

STATEMENT OF EVIDENCE

THE ORIGINAL CORNER WAS SET BY DEPUTY SURVEYOR JOHN M. GLEY ON SEPT. 29, 1851. A 6" TAMARACK AND A 12" OAK WERE NOTED AS BEARING TREES. ANY EVIDENCE TO THE ORIGINAL CORNER OR BEARING TREES NO LONGER REMAIN.

ON JUNE 14, 1903 JOHN NELSON RAN A SURVEY FROM THE SOUTHEAST CORNER OF 14 TO THE NORTHEAST CORNER OF SECTION 11 AND RECORDED DISTANCES OF *81* CHAINS ON BOTH THE EAST LINES OF SECTIONS 11 AND 14. JOHN ALSO STATED HE SET SANDSTONE MONUMENTS AT SECTION CORNERS AND QUARTER CORNERS.

IN SURVEYORS SECTION CORNERS TIE BOOK PAGE 25 GEORGE JENKS RECORDED FINDING AN OLD POST AND SETTING A STONE MARKED X. HE ALSO TOOK 3 TIES WHICH NO LONGER REMAIN.

IN MAY 2006 E.G. RUD AND SONS SURVEYED AROUND SECTIONS 1, 2, 11, 12, 13, AND 14 AND TIED IN LINES OF OCCUPATION AND EXISTING MONUMENTATION. THIS CORNER FALLS ON THE CENTERLINE OF A NORTH-SOUTH BITUMINOUS ROAD AND THE CENTERLINE OF A GRAVEL ROAD GOING EAST. NINE FEET SOUTH OF THE EAST GRAVEL ROAD IS AN OLD FENCE LINE RUNNING WEST.

ON JULY 18, 2006 AN EXCAVATION WAS MADE 8 FEET WIDE, 30 FEET LONG, AND 5 FEET DEEP. AT THE CENTERLINE OF THE EAST GRAVEL ROAD A 12" SQUARE SANDSTONE WAS FOUND WITH A CHISELED X. NO OTHER EVIDENCE WAS FOUND IN THE EXCAVATION SO E.G. RUD ACCEPTED THIS SANDSTONE TO BE THE ONE SET BY JOHN NELSON IN 1903. THE DISTANCE FROM THE SOUTHEAST CORNER OF SECTION 14 TO THE STONE WAS WITHIN 7 FEET OF JOHN NELSONS MEASUREMENT. WE TIED OUT THE STONE AND SET A 1/2" IRON PIPE ON ROADWAY SURFACE OVER THE STONE. HARN COORDINATES WERE ESTABLISHED USING G.P.S. EQUIPMENT