

CERTIFICATE OF LOCATION OF GOVERNMENT CORNER

NORTHEAST Corner of Section 23, Township 40, Range 23, 4TH P.M.

STATE OF MINNESOTA, County of KANABEC

At the corner location shown on the sketch:

IN OCTOBER 2005 FOUND THIS MONUMENT AND ESTABLISHED G.P.S. COORDINATES ON ITS LOCATION.

Kanabec County U.S. Survey Feet Coordinates
NAD 1983, HARN 1996 Adjustment
Obtained by RTK GPS Observation

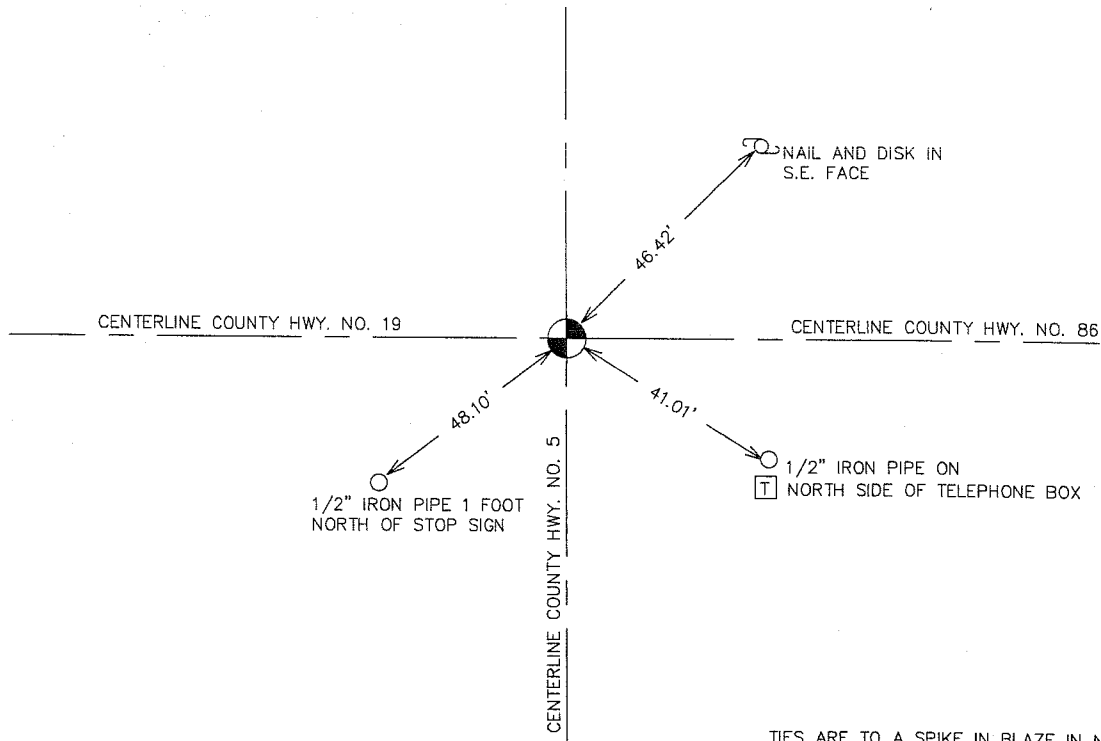
Northing= 179703.02

Easting= 432989.24

Note: NAD 1983, HARN 1996 Adjustment coordinates are NOT compatible with NAD 1983 coordinates

Note: 1 Meter=3937/1200 U.S. Survey Feet

SKETCH OF REFERENCE TIES FROM TIE SHEET 665



TIES ARE TO A SPIKE IN BLAZE IN NEAR FACE

Statement of evidence relative to this corner location is on back of page.

I hereby certify that this document and the data contained herein was prepared by me or under my direct supervision.

Ernest J. Reed
Signature

1-23-2006
Date

Registration No. Minn No 9808

- Land Surveyor, Professional Engineer
- County Surveyor, County Engineer

OFFICE OF THE COUNTY RECORDER

County of _____

I hereby certify that this document was filed in the County Recorder's office at _____ M. on the

_____ day of _____ A.D., 20__

County Recorder _____

BY _____ Deputy

DOCUMENT NO. _____

STATEMENT OF EVIDENCE

ALL OF THE ORIGINAL BEARING TREES ARE NOW GONE.

IN 1992, GEORGE ^{Jinks} ~~HKS~~, THE COUNTY SURVEYOR, SET A SANDSTONE MARKED WITH A "+" AT THIS CORNER - SEE CERTIFICATE NO. 4 ON FILE AT THE COUNTY RECORDER'S OFFICE.

IN 1992, CHARLES HANDSCHU, A LAND SURVEYOR, FOUND THE SANDSTONE MARKED WITH THE "+". THIS CORNER FALLS AT THE INTERSECTION OF ROADS NORTH-SOUTH-EAST AND WEST.

ON SEPTEMBER 2, 1982, M.B. RUDE MADE AN EXCAVATION WITH THE COUNTY BACKHOE AT THIS CORNER. AT 3 FEET BELOW THE SURFACE WE FOUND A 12" BY 12" SANDSTONE MARKED WITH AN "+" PER JINKS' RECORDS.

WE SET A 4" BY 17" CAST IRON MONUMENT ON TOP OF THE SANDSTONE TO MARK THIS CORNER.

IN OCTOBER 2005 E.G. RUD JACK HAMMERED THROUGH 10" OF BITUMINOUS AND 4" INTO THE GRAVEL BASE, FOUND THE C.I.M. A 60 PENNY SPIKE WAS SET ON TOP OF THIS MONUMENT AND GPS COORDINATES ESTABLISHED USING G.P.S COORDINATES.