

CERTIFICATE OF LOCATION OF GOVERNMENT CORNER

E. 1/4 Corner of Section 23, Township 40, Range 23, 4TH P.M.

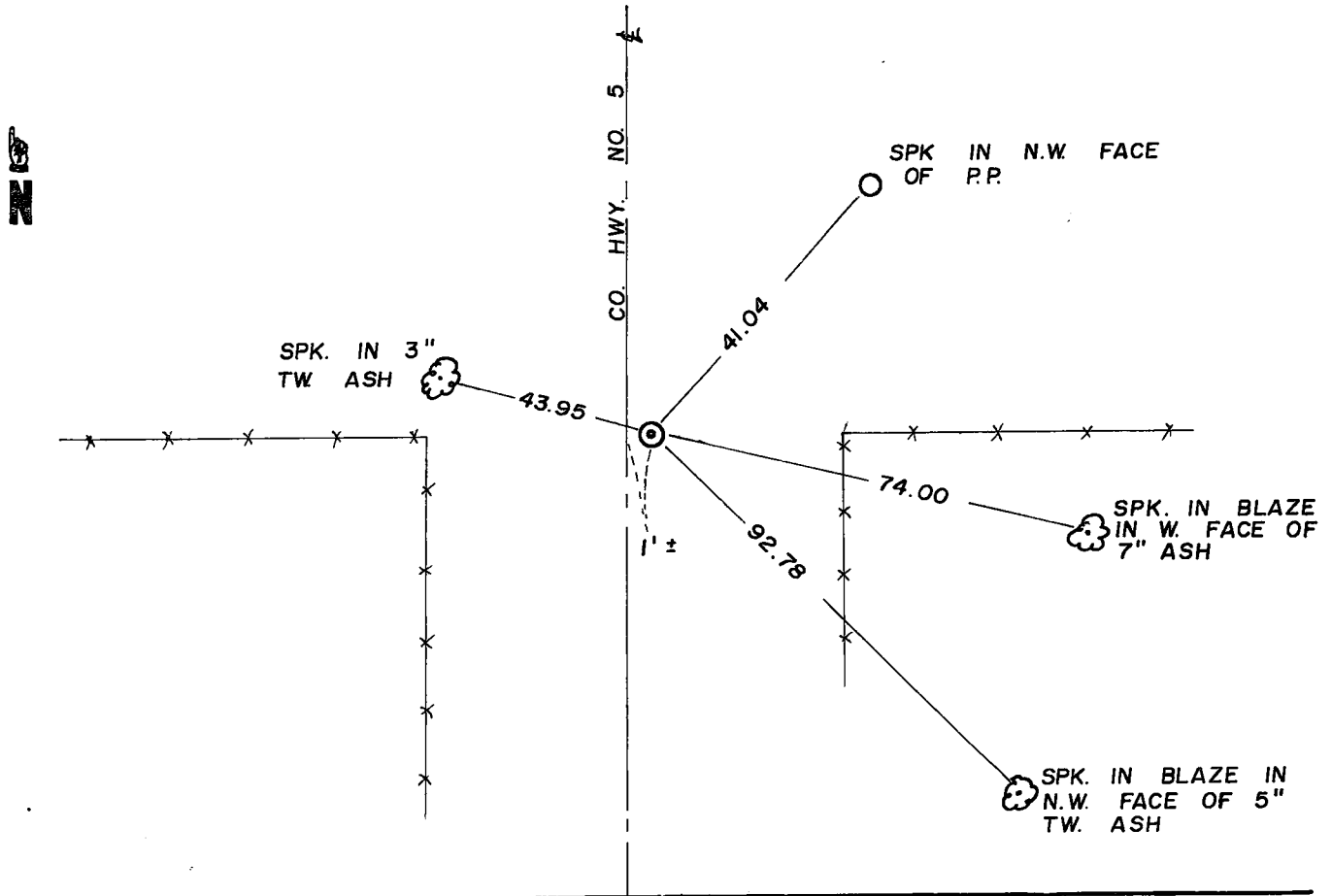
STATE OF MINNESOTA, County of KANABEC

At the corner location shown on the sketch

On 9 - 24 - 82 found a P. K. NAIL
Date

left monument as found, lowered monument, removed monument (explain)
 On 9 - 28 - 82 placed a 4" x 17" C.I.M.
Date

SKETCH OF REFERENCE TIES



Statement of evidence relative to this corner location is on back of page.

I hereby certify that this document and the data contained herein was prepared by me or under my direct supervision.

D.M. B. Bask 10-6-82
Signature Date

Registration No. 8195

Land Surveyor, Professional Engineer

County Surveyor, County Engineer

County Recorder
OFFICE OF THE REGISTER OF DEEDS

County of Kanabec

I hereby certify that this document was filed in the Register of Deeds office at 10:45 A.M. on the

20 day of October A.D., 1982

County Recorder
Registered of Deeds Velma J. Besser

By _____, Deputy

DOCUMENT NO. _____

42/22

STATEMENT OF EVIDENCE

All of the original bearing trees are now gone.

There are no old survey records on file for this corner.

This corner falls on a north-south road and old fence lines east and west.

On September 24, 1982, we found a spike on the surface of the road, set by the County Highway Department.

On September 28, 1982, we offset the spike and made an excavation with the County backhoe. The excavation was 15 feet square, 4 feet deep, 1 foot into the natural ground. No additional evidence was found in the excavation.

We accepted the found spike as the best available evidence of the original corner location. This location is in harmony with accepted lines of occupation and is on line with the southeast and northeast corners of Section 23 and 4.72 feet south of a split. We set a 4" by 17" cast iron monument to mark this corner.