

# CERTIFICATE OF LOCATION OF GOVERNMENT CORNER

NORTH QUARTER Corner of Section 25, Township 40, Range 23, 4TH P.M.

STATE OF MINNESOTA, County of KANABEC

At the corner location shown on the sketch:  
On 01/28/2003 Set a Kanabec County Monument.

Kanabec County U.S. Survey Feet Coordinates  
NAD 1983, HARN 1996 Adjustment  
Obtained by RTK GPS Observation

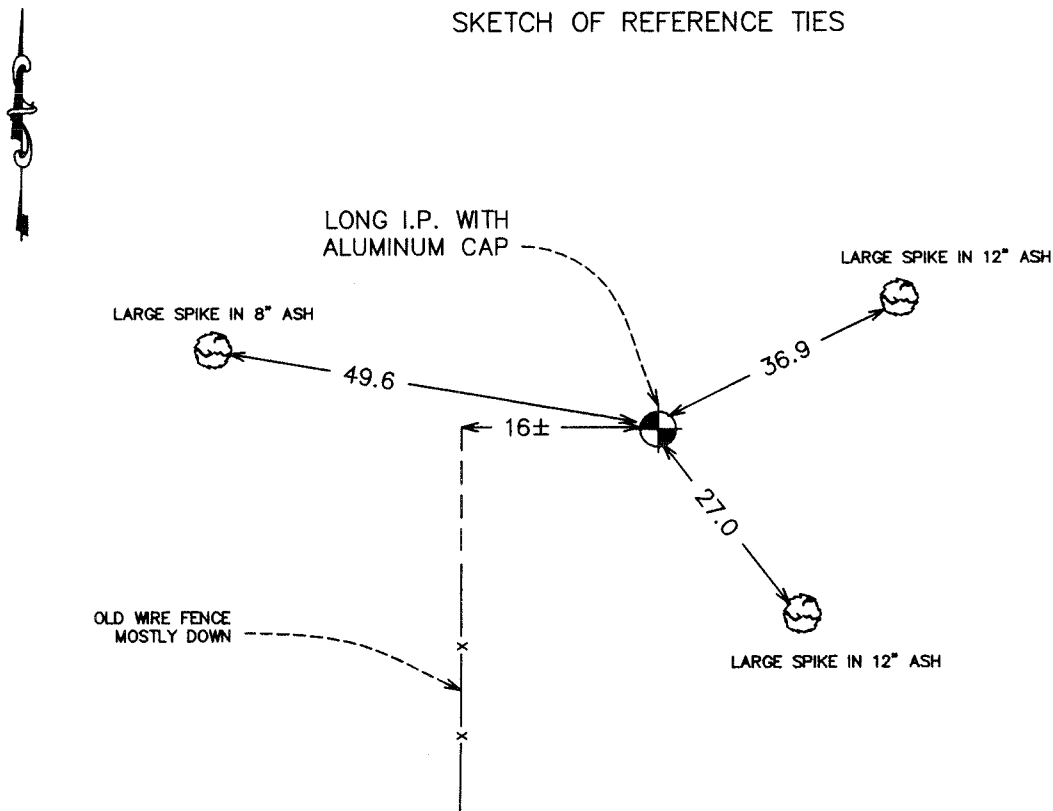
Northing= 174411.049

Easting= 435638.158

Note: NAD 1983, HARN 1996 Adjustment  
coordinates are NOT compatible with  
NAD 1983 coordinates

Note: 1 Meter=3937/1200 U.S. Survey Feet

SKETCH OF REFERENCE TIES



Statement of evidence relative to this corner location is on back of page.

I hereby certify that this document and the data contained herein was prepared by me or under my direct supervision.

Ernest Hub  
Signature

5-21-2004  
Date

Registration No. 9808

Land Surveyor,     Professional Engineer

County Surveyor,     County Engineer

## OFFICE OF THE COUNTY RECORDER

County of \_\_\_\_\_

I hereby certify that this document was filed in the County Recorder's office at \_\_\_\_\_ M. on the \_\_\_\_\_ day of \_\_\_\_\_ A.D., 20\_\_\_\_

County Recorder \_\_\_\_\_

BY \_\_\_\_\_ Deputy

**DOCUMENT NO.** \_\_\_\_\_

## STATEMENT OF EVIDENCE

The original corner was set by John M. Gray in September of 1851. Evidence of original corner and bearing trees no longer remain.

No subsequent records of survey along this line were found at Kanabec County.

In December of 2002, we surveyed Sections 24,25, and 26 to locate corners and tie in lines of occupation.

We had no parole evidence or physical evidence to reset this corner, so we set this by lost methods on line and equal distance from northeast and northwest corners of Section 25.

On January 28, 2003, we set a 48" iron pipe with a Kanabec County aluminum cap. We took ties and established Kanabec County Coordinates using G.P.S. equipment.