

CERTIFICATE OF LOCATION OF GOVERNMENT CORNER

East quarter Corner of Section 26, Township 40, Range 23, 4th P.M.
 STATE OF MINNESOTA, County of KANABEC

At the corner location shown on the sketch:

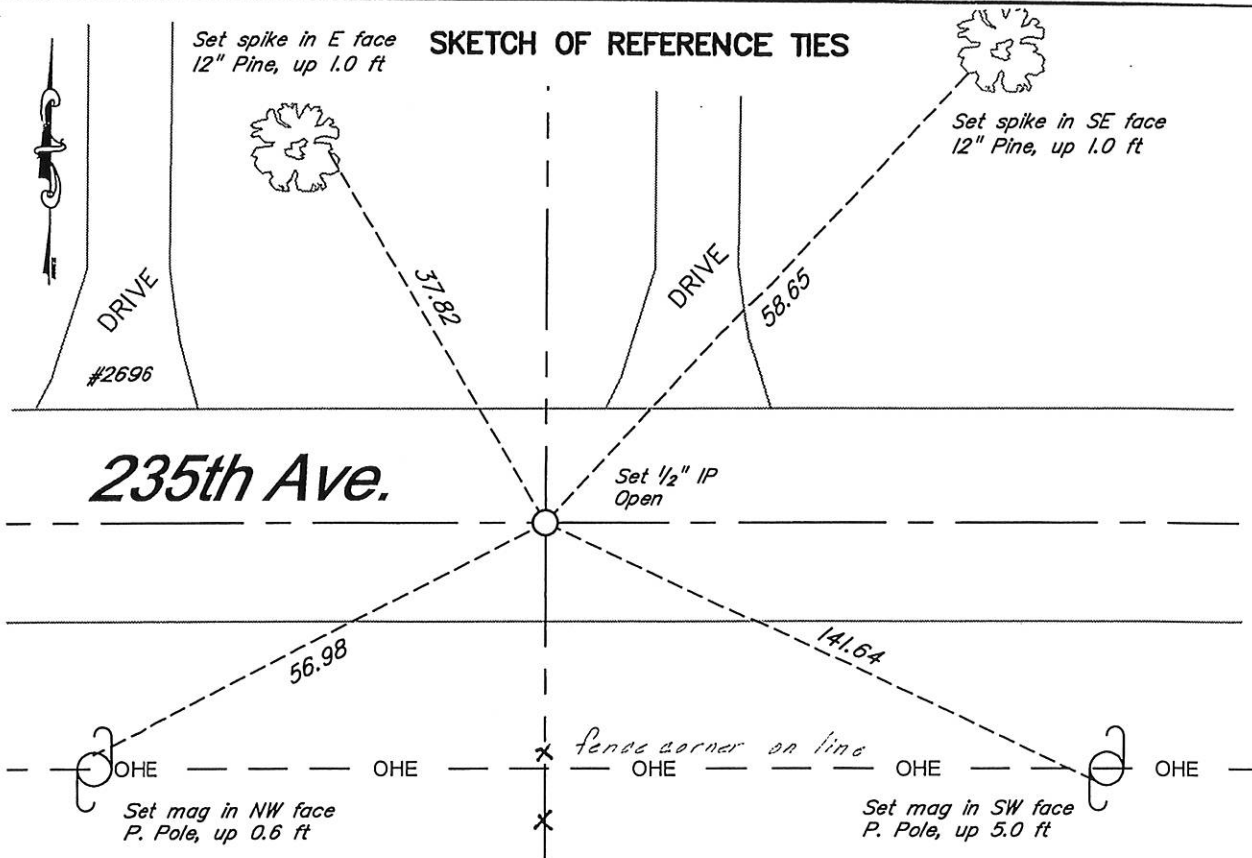
Set 1/2" iron pipe at location of previously found stone.

Kanabec County U.S. Survey Feet Coordinates
 NAD 1983, HARN 1996 Adjustment
 Obtained by RTK GPS Observation

Northing= 171821.48
 Easting= 432997.90

Note: NAD 1983, HARN 1996 Adjustment coordinates are NOT compatible with NAD 1983 coordinates

Note: 1 Meter=3937/1200 U.S. Survey Feet



Statement of evidence relative to this corner location is on back of page.

I hereby certify that this document and the data contained herein was prepared by me or under my direct supervision.

Ernest L. Rud
 Signature

Dec 1, 2014
 Date

Registration No. 9808

- Land Surveyor, Professional Engineer
 County Surveyor, County Engineer

OFFICE OF THE COUNTY RECORDER

County of _____

I hereby certify that this document was filed in the County Recorder's office at _____ M. on the _____ day of _____ A.D., 20____

County Recorder _____

BY _____ Deputy

DOCUMENT NO. _____

STATEMENT OF EVIDENCE

East Quarter Corner Section 26, Township 40, Range 23

The original government post was set by a deputy surveyor John M. Gley on September 27, 1851 and two bearing trees noted as;

8" Ironwood bearing South 84° West at 6 Links

8" Sugar Maple bearing South 77° East at 7 Links

No evidence for post or bearing trees could be found

No subsequent surveys could be found on file at the Kanabec County office.

In 2002 Terry Rothenbacher with pioneer engineering did a survey in Section 25 and found a stone with a chiseled "x" just below the surface of the gravel road. In Dec 2005 E.G. Rud and Sons found this stone and established Kanabec County Coordinates on this position in doing a survey in Section 25. In 2014 Bogart and Peterson in doing a survey in Northeast Quarter of Section 24 could not locate this stone. I met Craig Wensmann on site and a hand excavation had been done with no stone. It must of gotten graded out with the road maintenance. Therefore a ½" iron pipe was set in its place, ties taken and Kanabec County Coordinates established on this position.