

CERTIFICATE OF LOCATION OF GOVERNMENT CORNER

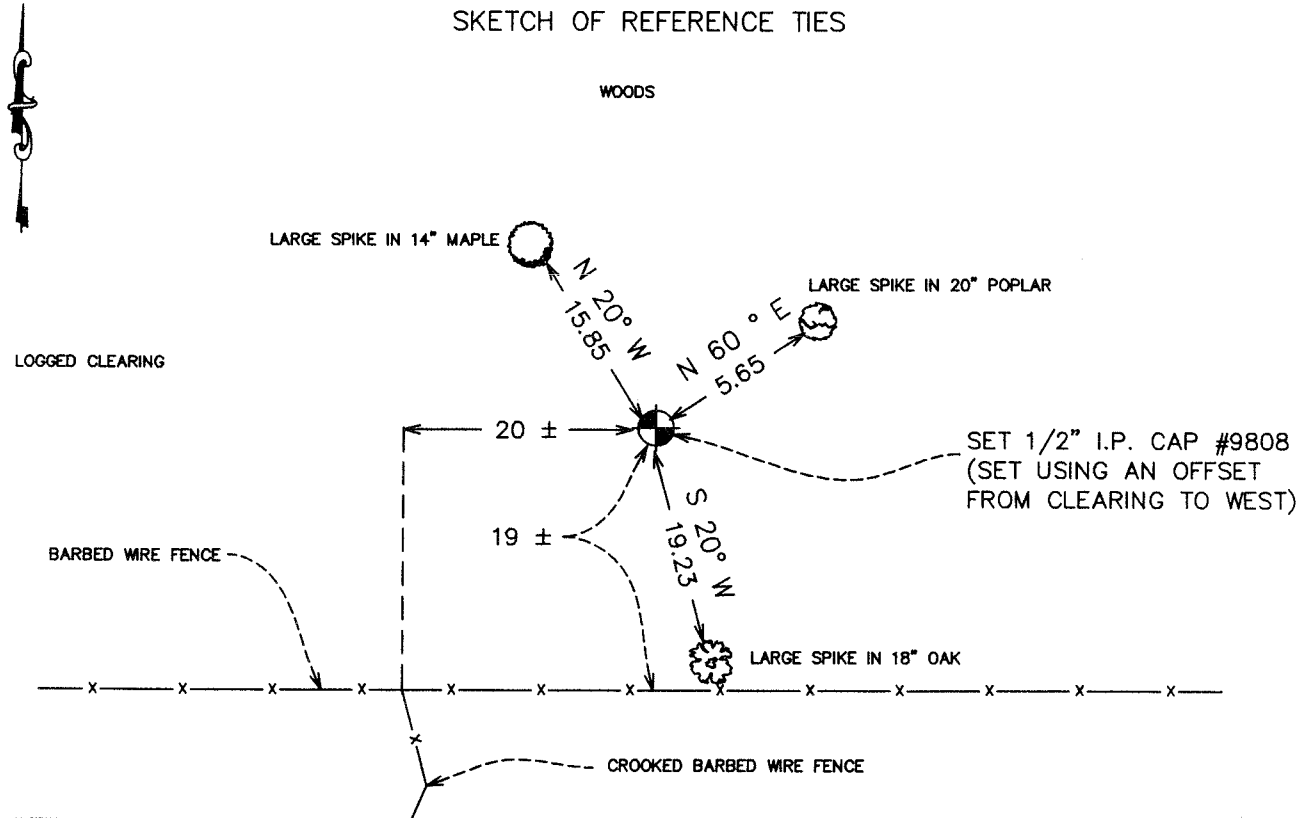
SOUTH QUARTER Corner of Section 25, Township 40, Range 23, 4TH P.M.

STATE OF MINNESOTA, County of KANABEC

At the corner location shown on the sketch:
On 01/28/2003 Set a Kanabec County Monument.

Kanabec County U.S. Survey Feet Coordinates
NAD 1983, HARN 1996 Adjustment
Obtained by RTK GPS Observation
Northing= 169132.694
Easting= 435669.479
Note: NAD 1983, HARN 1996 Adjustment
coordinates are NOT compatible with
NAD 1983 coordinates
Note: 1 Meter=3937/1200 U.S. Survey Feet

SKETCH OF REFERENCE TIES



Statement of evidence relative to this corner location is on back of page.

I hereby certify that this document and the data contained herein was prepared by me or under my direct supervision.

Ernest J. Rud
Signature

5-27-2004
Date

Registration No. 9808

Land Surveyor, [] Professional Engineer

[] County Surveyor, [] County Engineer

OFFICE OF THE COUNTY RECORDER

County of _____

I hereby certify that this document was filed in the County Recorder's office at _____ M. on the _____ day of _____ A.D., 20____

County Recorder _____

BY _____ Deputy

DOCUMENT NO. _____

STATEMENT OF EVIDENCE

The original corner was set by John M. Gray in September of 1851. Evidence of original corner and bearing trees no longer remain.

No subsequent records of survey along this line were found at Kanabec County.

In December of 2002, we surveyed Sections 24,25, and 26 to locate corners and tie in lines of occupation.

With no parole evidence or physical evidence we set this corner by lost method, on line of equal distance from the northeast and northwest corners of Section 36.

(2003)

On January 28, 2003, we set a 48" iron pipe with Kanabec County aluminum cap. We took ties and established Kanabec County Coordinates using G.P.S. equipment.