

CERTIFICATE OF LOCATION OF GOVERNMENT CORNER

NORTHEAST Corner of Section 35, Township 40, Range 23, 4TH P.M.

STATE OF MINNESOTA, County of KANABEC

At the corner location shown on the sketch:
On 01/28/2003 Found a Kanabec County Monument.

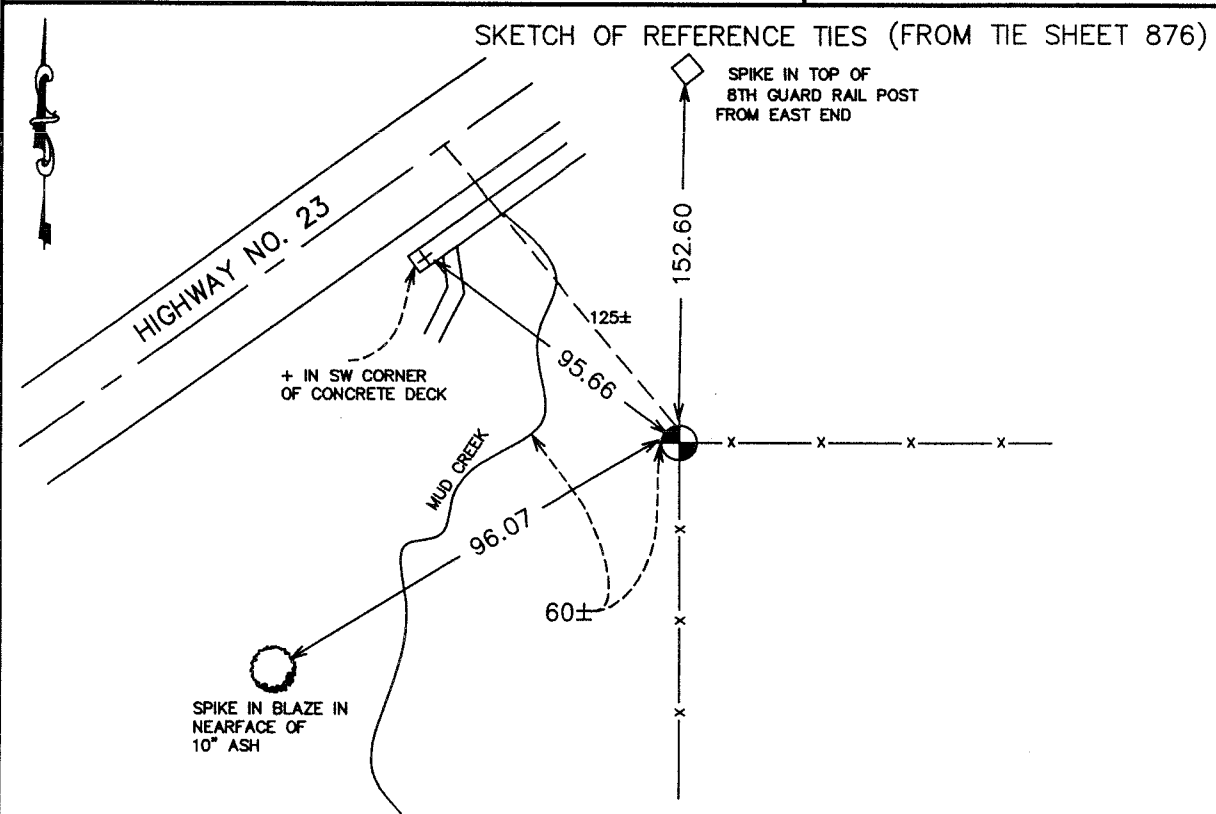
Kanabec County U.S. Survey Feet Coordinates
NAD 1983, HARN 1996 Adjustment
Obtained by RTK GPS Observation

Northing= 169169.023

Easting= 433053.978

Note: NAD 1983, HARN 1996 Adjustment
coordinates are NOT compatible with
NAD 1983 coordinates

Note: 1 Meter=3937/1200 U.S. Survey Feet



Statement of evidence relative to this corner location is on back of page.

I hereby certify that this document and the data contained herein was prepared by me or under my direct supervision.

Ernest J. Rud 6-7-2004
Signature Date

Registration No. 9808

Land Surveyor, Professional Engineer

County Surveyor, County Engineer

OFFICE OF THE COUNTY RECORDER

County of _____

I hereby certify that this document was filed in the County Recorder's office at _____ M. on the

_____ day of _____ A.D., 20__

County Recorder _____

BY _____ Deputy

DOCUMENT NO. _____

STATEMENT OF EVIDENCE

from tie sheet 876

All of the original government bearing trees are now gone.

In 1929, the notes of Land Surveyor, Charles Handschu, show a large iron monument at this corner.

The Department of Transportation's right-of-way map for State Highway No. 23 shows an iron bar in place at this corner.

On August 3, 1993, we ran a traverse to this area and found a 2" square headed iron bar which fits the D.O.T. and Handschu's records.

We accepted this location as the perpetual location of the original government corner post.

(2003)

On January 28, 2003, we established Kanabec County coordinates on this corner using G.P.S. equipment.