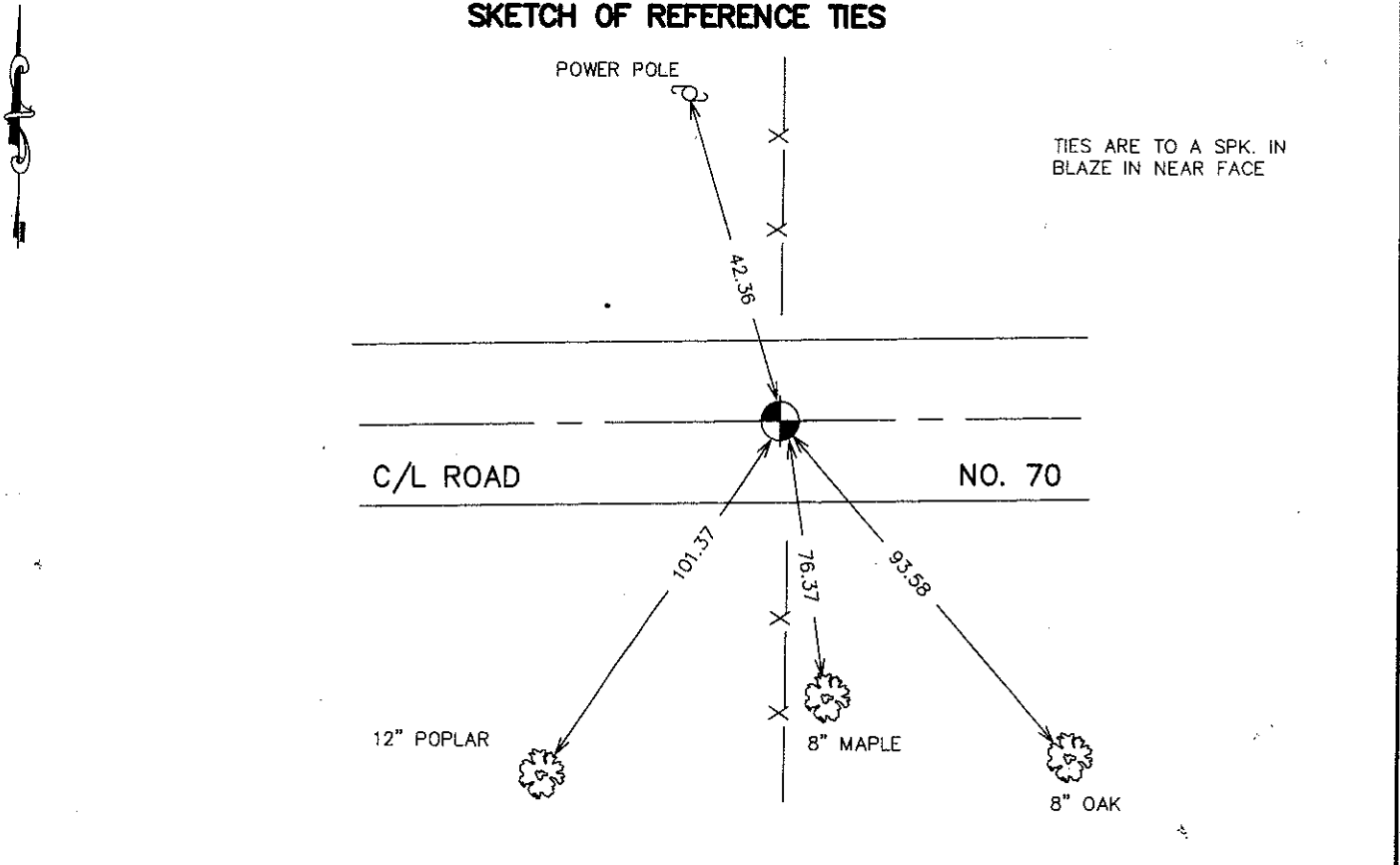


CERTIFICATE OF LOCATION OF GOVERNMENT CORNER

EAST QUARTER Corner of Section 35, Township 40, Range 23, 4TH P.M.
 STATE OF MINNESOTA, County of KANABEC

At the corner location shown on the sketch: FOUND THIS MONUMENT AND ESTABLISHED KANABEC COUNTY COORDINATES ON ITS LOCATION.	Kanabec County U.S. Survey Feet Coordinates NAD 1983, HARN 1996 Adjustment Obtained by RTK GPS Observation Northing= <u>166462.54</u> Easting= <u>433003.315</u> Note: NAD 1983, HARN 1996 Adjustment coordinates are NOT compatible with NAD 1983 coordinates Note: 1 Meter=3937/1200 U.S. Survey Feet
---	---

SKETCH OF REFERENCE TIES



Statement of evidence relative to this corner location is on back of page.

I hereby certify that this document and the data contained herein was prepared by me or under my direct supervision.

Earl Hud 10-05-2007
 Signature Date

Registration No. 9808

Land Surveyor, Professional Engineer
 County Surveyor, County Engineer

OFFICE OF THE COUNTY RECORDER

County of _____

I hereby certify that this document was filed in the County Recorder's office at _____ M. on the

_____ day of _____ A.D., 20__

County Recorder _____

BY _____ Deputy

DOCUMENT NO. _____

EAST QUARTER CORNER SECTION 35, T40, R23

STATEMENT OF EVIDENCE

ALL OF THE ORIGINAL GOVERNMENT BEARING TREES ARE NOW GONE.

THE RECORDS OF CHARLES HANDSCHU, A LAND SURVEYOR, FROM 1929, SHOW AN IRON MONUMENT AT THIS CORNER IN THE CENTERLINE OF THE EAST-WEST ROAD AND ON THE FENCE LINE NORTH-SOUTH.

IN AUGUST OF 1993, M.B. RUDE MADE A SURVEY IN SECTION 35, TOWNSHIP 40, RANGE 23, TO LOCATE THE EXISTING MONUMENTS, LINES OF OCCUPATION AND SEARCH AREAS. HE FOUND A 1" BY 16" AXEL SHAFT WITH A MAGNETIC LOCATOR AT THE EAST QUARTER CORNER OF SECTION 35, TOWNSHIP 40, RANGE 23.

ON AUGUST 5, 1993, HE MADE A 3' BY 15' BY 15' EXCAVATION WITH A BACKHOE. NO OTHER EVIDENCE OF THE CORNER WAS FOUND IN THE EXCAVATION.

THE 1" BY 16" AXEL SHAFT WAS ACCEPTED AS THE PERPETUATED LOCATION OF THE ORIGINAL CORNER LOCATION. HE PLACE A #7 REBAR WITH AN ALUMINUM CAP.

IN MAY 2007 E.G. RUD AND SONS FOUND THIS MONUMENT AND ESTABLISHED KANABEC COUNTY COORDINATES ON THE LOCATION USING G.P.S. EQUIPMENT.