

# CERTIFICATE OF LOCATION OF GOVERNMENT CORNER

SOUTH QUARTER Corner of Section 35, Township 40, Range 23, 4TH P.M.

STATE OF MINNESOTA, County of KANABEC

At the corner location shown on the sketch:

FOUND THIS MONUMENT  
AND ESTABLISHED G.P.S. COORDINATES ON ITS LOCATION.

Kanabec County U.S. Survey Feet Coordinates  
NAD 1983, HARN 1996 Adjustment  
Obtained by RTK GPS Observation

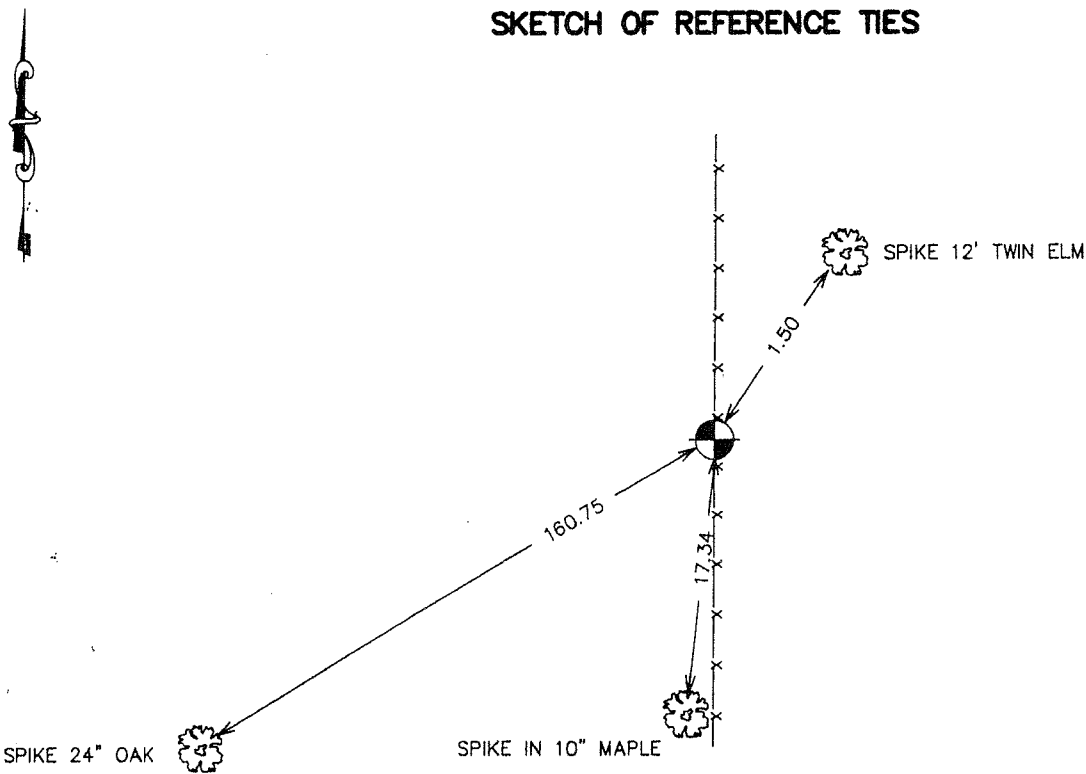
Northing= 163862.21

Easting= 430389.245

Note: NAD 1983, HARN 1996 Adjustment  
coordinates are NOT compatible with  
NAD 1983 coordinates

Note: 1 Meter=3937/1200 U.S. Survey Feet

### SKETCH OF REFERENCE TIES



Statement of evidence relative to this corner location is on back of page.

I hereby certify that this document and the data contained herein was prepared by me or under my direct supervision.

*Ernest J. Rud*  
Signature

9-28-2006  
Date

Registration No. Minn No 9808

Land Surveyor, [ ] Professional Engineer

[ ] County Surveyor, [ ] County Engineer

### OFFICE OF THE COUNTY RECORDER

County of \_\_\_\_\_

I hereby certify that this document was filed in the County Recorder's office at \_\_\_\_\_ M. on the

\_\_\_\_\_ day of \_\_\_\_\_ A.D., 20\_\_\_\_

County Recorder \_\_\_\_\_

BY \_\_\_\_\_ Deputy

DOCUMENT NO. \_\_\_\_\_

SOUTH QUARTER CORNER SECTION 35, T40, R23

**STATEMENT OF EVIDENCE**

ALL GOVERNMENT TIES ARE GONE  
BURR OAK 23" S83°W 26 LINKS  
IRONWOOD 8" S72°E 26 LINKS

RESURVEY INFORMATION

THERE IS NO RESURVEY INFORMATION AVAILABLE IN THE COUNTY RECORD BOOKS.

ON AUGUST 15 1986, TERRY JOHNSON FOUND A 1/2" REBAR ON A FENCE LINE WHICH RUNS NORTH-SOUTH. THIS REBAR FITS THE PLATS OF BLAKE'S PINES AND JOHNSON AND BLAKE'S SOUTH LAKEVIEW ADDITION. I ACCEPTED THE RE-BAR AS THE BEST EVIDENCE OF THE LOCATION OF THE ORIGINAL CORNER.

IN AUGUST 2006 E.G. RUD AND SONS FOUND THIS MONUMENT AND ESTABLISHED KANABEC COUNTY COORDINATES ON THIS POSITION USING G.P.S. EQUIPMENT.