

CERTIFICATE OF LOCATION OF GOVERNMENT CORNER

SOUTH QUARTER Corner of Section 32, Township 40, Range 23, 4TH P.M.

STATE OF MINNESOTA, County of KANABEC

At the corner location shown on the sketch:
IN OCTOBER 2005 SET THIS MONUMENT
AND ESTABLISHED G.P.S. COORDINATES ON ITS LOCATION.

Kanabec County U.S. Survey Feet Coordinates
NAD 1983, HARN 1996 Adjustment
Obtained by RTK GPS Observation

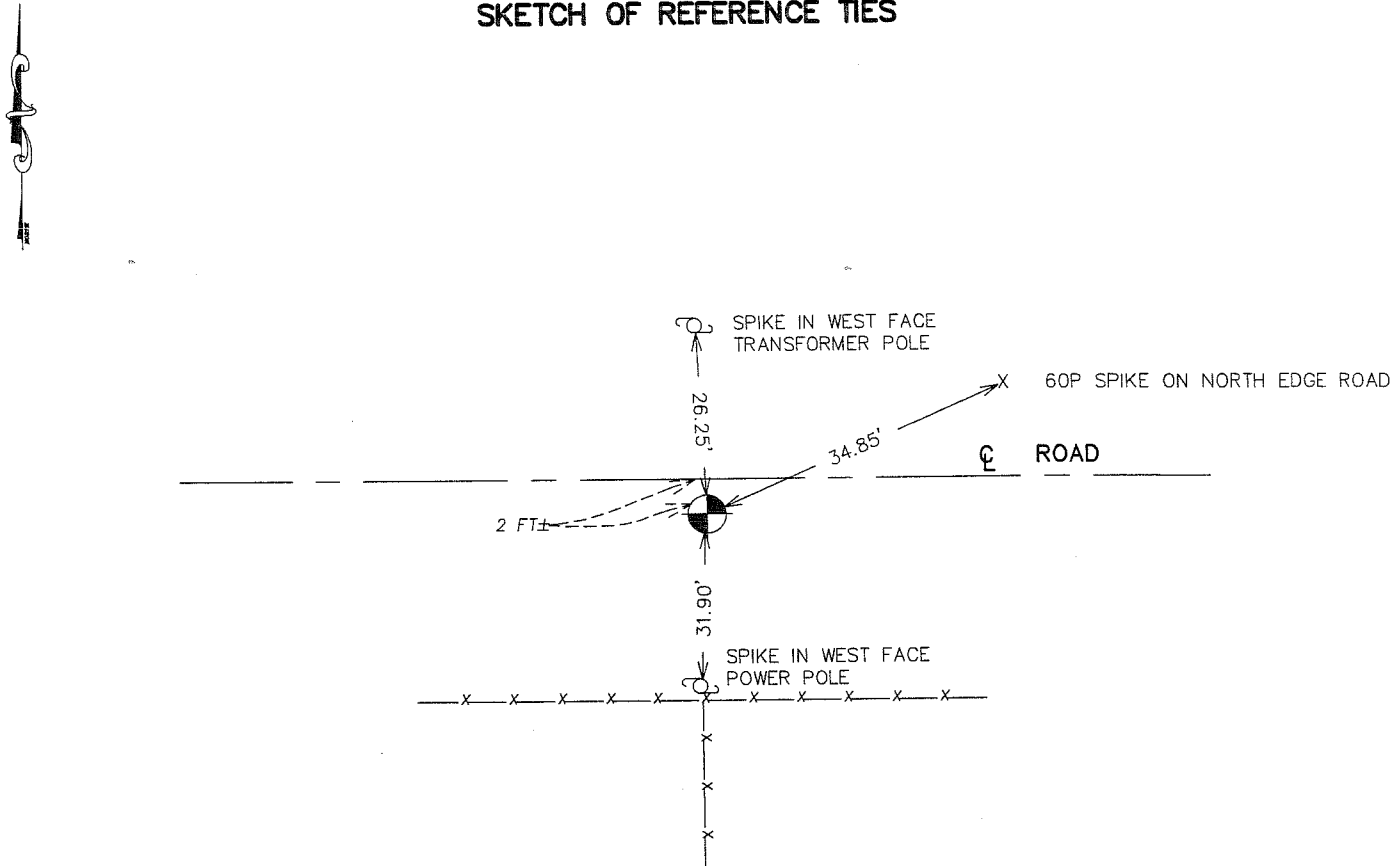
Northing= 163834.70

Easting= 414608.46

Note: NAD 1983, HARN 1996 Adjustment
coordinates are NOT compatible with
NAD 1983 coordinates

Note: 1 Meter=3937/1200 U.S. Survey Feet

SKETCH OF REFERENCE TIES



Statement of evidence relative to this corner location is on back of page.

I hereby certify that this document and the data contained herein was prepared by me or under my direct supervision.

Ernest J. Paul
Signature

1-23-2006
Date

Registration No. Minn No 9808

Land Surveyor, Professional Engineer

County Surveyor, County Engineer

OFFICE OF THE COUNTY RECORDER

County of _____

I hereby certify that this document was filed in the County Recorder's office at _____ M. on the _____ day of _____ A.D., 20____

County Recorder _____

BY _____ Deputy

DOCUMENT NO. _____

STATEMENT OF EVIDENCE

THE ORIGINAL CORNER WAS SET BY GOVERNMENT SURVEYOR SILAS BARNARD IN SEPTEMBER 1855. NO EVIDENCE FOR THE CORNER OR BEARING TREES REMAIN. ON JUNE 7TH 1902, JOHN NELSON, MADE A SURVEY OF SECTION 5 AND AT THIS CORNER TOOK TIES. THE NOTES DO NOT INDICATE WHAT TYPE OF MONUMENT. THE TIES TAKEN NO LONGER REMAIN.

IN OCTOBER 2005 E.G. RUD RAN A SURVEY OF SECTION 5 TO LOCATE EXISTING MONUMENTATION AND TIE IN LINES OF OCCUPATION.

ON OCTOBER 4, 2005 KANABC COUNTY HIGHWAY DEPARTMENT MADE AN EXCAVATION ON THE CENTERLINE OF A GRAVEL ROAD AND A FENCE LINE GOING SOUTH.

THIS EXCAVATION WAS 7' BY 10' BY 1' INTO NATURAL GROUND. NO EVIDENCE WAS FOUND IN THE EXCAVATION.

SEVERAL STONES WERE FOUND BUT NO MARKINGS COULD BE DETECTED ON ANY OF THEM.

E.G. RUD SET THIS CORNER ON LINE AND AT A PROPORTIONATE DISTANCE BETWEEN THE NORTHEAST AND NORTHWEST CORNERS OF SECTION 5. THIS FELL 2 FEET BETWEEN SOUTH OF CENTERLINE AND ON THE NORTHERLY EXTENSION OF THE FENCE RUNNING SOUTH, KANABEC COUNTY COORDINATES WERE ESTABLISHED USING G.P.S EQUIPMENT.