

# CERTIFICATE OF LOCATION OF GOVERNMENT CORNER

NORTHEAST 6 39 23  
 SOUTHEAST Corner of Section 31, Township 40, Range 23, 4TH P.M.

STATE OF MINNESOTA, County of KANABEC

At the corner location shown on the sketch:  
 IN OCTOBER 2005 FOUND MONUMENT  
 AND ESTABLISHED G.P.S. COORDINTES ON THE LOCATION.

Kanabec County U.S. Survey Feet Coordinates  
 NAD 1983, HARN 1996 Adjustment  
 Obtained by RTK GPS Observation

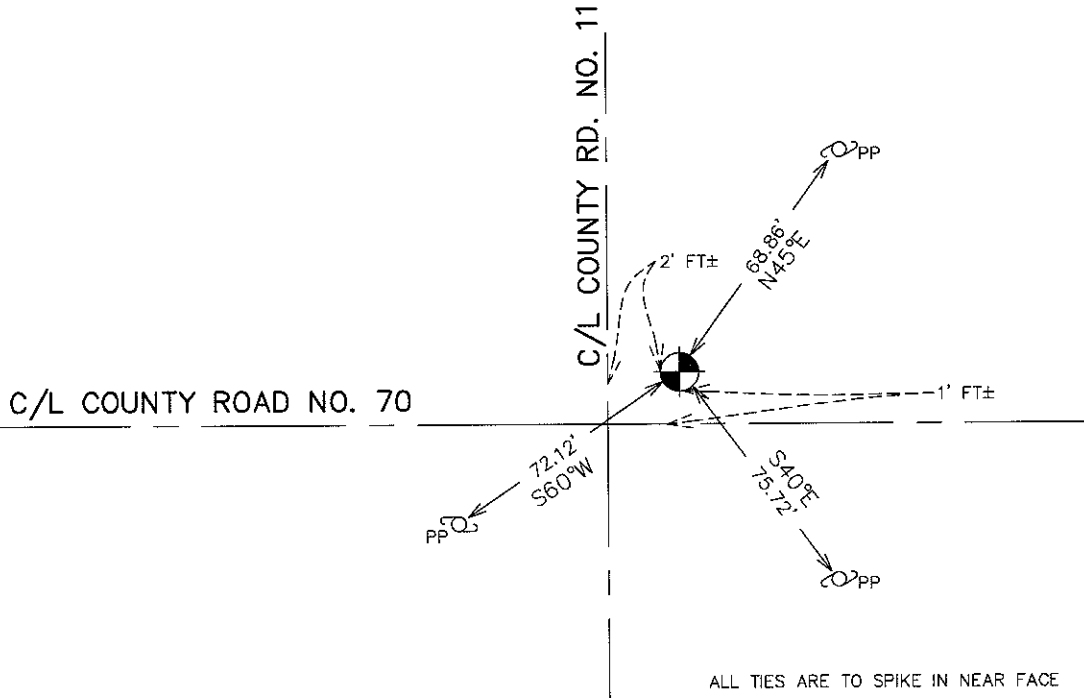
Northing= 163842.239

Easting= 411980.246

Note: NAD 1983, HARN 1996 Adjustment  
 coordinates are NOT compatible with  
 NAD 1983 coordinates

Note: 1 Meter=3937/1200 U.S. Survey Feet

## SKETCH OF REFERENCE TIES FROM TIE SHEET 583



Statement of evidence relative to this corner location is on back of page.

I hereby certify that this document and the data contained herein was prepared by me or under my direct supervision.

Ernest J. Rud  
 Signature

1-26-2010  
 Date

Registration No. 9808

Land Surveyor,  Professional Engineer

County Surveyor,  County Engineer

### OFFICE OF THE COUNTY RECORDER

County of \_\_\_\_\_

I hereby certify that this document was filed in the County Recorder's office at \_\_\_\_\_ M. on the

\_\_\_\_\_ day of \_\_\_\_\_ A.D., 20\_\_\_\_

County Recorder \_\_\_\_\_

BY \_\_\_\_\_ Deputy

DOCUMENT NO. \_\_\_\_\_

SE CORNER, SEC. 31, T40, R23

**STATEMENT OF EVIDENCE:**

**ALL OF THE ORIGINAL BEARING TREES ARE NOW GONE.**

**IN 1887, THOMAS R. VICKERY SET A 4" OAK POST AT THIS CORNER.**

**ON JUNE 19, 1981, AN EXCAVATION WAS MADE WITH THE COUNTY BACKHOE AND AT 5 FEET BELOW THE SURFACE M.B. RUDE FOUND A SANDSTONE WITH A + CUT IN THE TOP AT THIS CORNER.**

**A 4" BY 17" CAST IRON MONUMENT WAS SET OVER THE SANDSTONE TO MARK THIS CORNER.**

**IN OCTOBER 2005 E.G. RUD FOUND THIS MONUMENT AND ESTABLISHED KANABEC COUNTY COORDINATES ON THIS POSITION USING G.P.S. EQUIPMENT.**

**IN NOVEMBER 2009, AFTER COUNTY RD 11 WAS RECONSTRUCTED THIS MONUMENT WAS VERIFIED AND NEW TIES WERE TAKEN.**