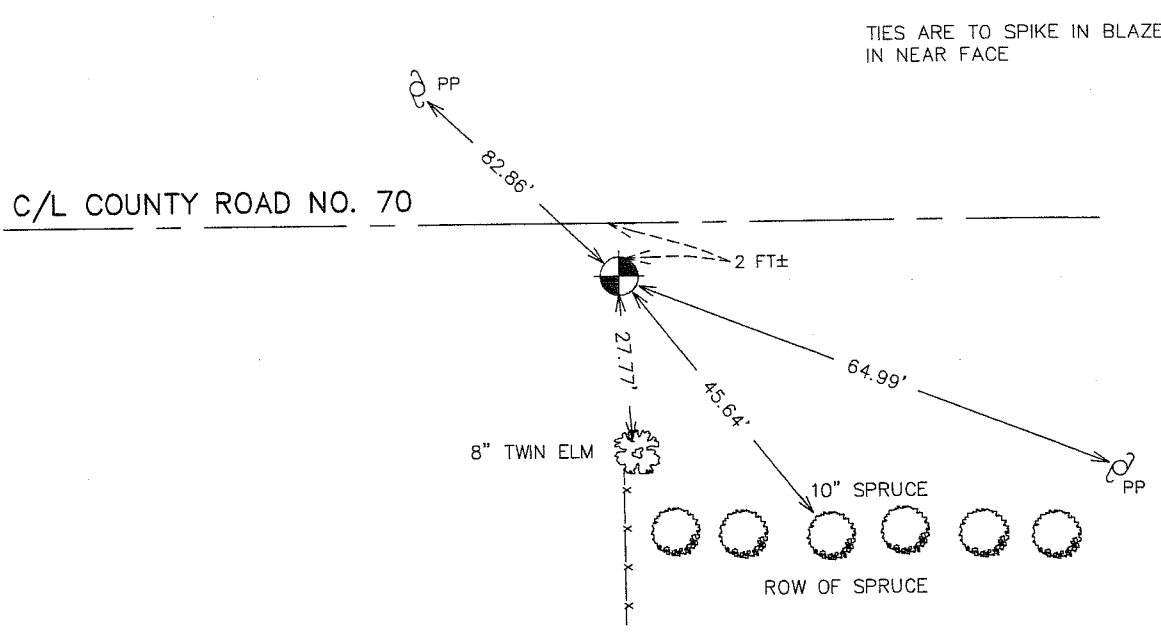


# CERTIFICATE OF LOCATION OF GOVERNMENT CORNER

SOUTH QUARTER Corner of Section 31, Township 40, Range 23, 4TH P.M.  
 STATE OF MINNESOTA, County of KANABEC

At the corner location shown on the sketch: IN OCTOBER 2005 SET 1/2" IRON PIPE AND ESTABLISHED G.P.S. COORDINTES ON THE LOCATION.	Kanabec County U.S. Survey Feet Coordinates NAD 1983, HARN 1996 Adjustment Obtained by RTK GPS Observation Northing= <u>163834.27</u> Easting= <u>409352.28</u> Note: NAD 1983, HARN 1996 Adjustment coordinates are NOT compatible with NAD 1983 coordinates Note: 1 Meter=3937/1200 U.S. Survey Feet
---	--

## SKETCH OF REFERENCE TIES FROM TIE SHEET 582



Statement of evidence relative to this corner location is on back of page.

I hereby certify that this document and the data contained herein was prepared by me or under my direct supervision.

Ernest L. Reed 1-23-2006  
 Signature Date

Registration No. Minn No 9808

Land Surveyor,  Professional Engineer  
 County Surveyor,  County Engineer

**OFFICE OF THE COUNTY RECORDER**  
 County of \_\_\_\_\_

I hereby certify that this document was filed in the County Recorder's office at \_\_\_\_\_ M. on the \_\_\_\_\_ day of \_\_\_\_\_ A.D., 20\_\_\_\_

County Recorder \_\_\_\_\_  
 BY \_\_\_\_\_ Deputy

**DOCUMENT NO.** \_\_\_\_\_

**STATEMENT OF EVIDENCE:**

**ALL OF THE ORIGINAL BEARING TREES ARE NOW GONE.**

**IN 1887, THOMAS R. VICKERY, A SURVEYOR, SET A 4" OAK POST TO MARK THIS CORNER BY SINGLE PROPORTIONAL MEASUREMENT.**

**IN JUNE 1981, M.B. RUDE RAN A SURVEY AROUND SECTION 6 AND LOCATED THE EXISTING MONUMENTS AND LINES OF OCCUPATION.**

**THIS CORNER IS IN AN EAST-WEST ROAD AND AN OLD FENCE LINE SOUTH.**

**AN EXCAVATION WAS MADE WITH THE COUNTY BACKHOE AT THIS CORNER. THE EXCAVATION WAS 15 FEET SQUARE, 3 FEET DEEP, 1 FOOT INTO NATURAL GROUND. NO EVIDENCE WAS FOUND IN THE EXCAVATION.**

**A 4" BY 17" CAST IRON MONUMENT WAS SET BY SINGLE PROPORTIONAL MEASUREMENT BETWEEN THE NORTHEAST AND THE NORTHWEST CORNERS OD SECTION 6. THIS LOCATION FITS THE ACCEPTED LINES OF OCCUPATION AT THE QUARTER CORNER AND ALSO AT THE SIXTEENTH CORNERS, A QUARTER MILE EAST AND WEST.**

**IN OCTOBER 2005 E.G. RUD FOUND THIS MONUMENT AND ESTABLISHED KANABEC COUNTY COORDINATES ON THIS POSITION USING G.P.S. EQUIPMENT.**