

# CERTIFICATE OF LOCATION OF GOVERNMENT CORNER

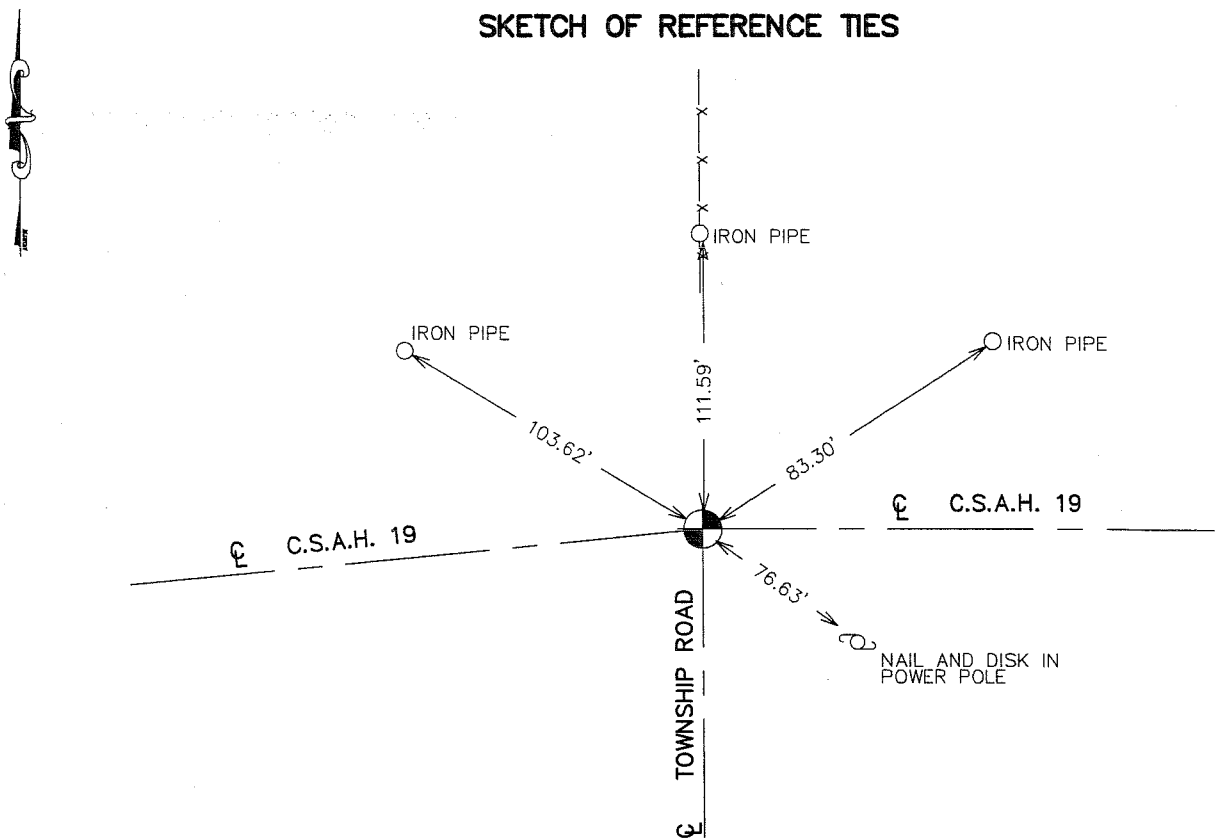
NORTHWEST Corner of Section 19, Township 40, Range 23, 4TH P.M.

STATE OF MINNESOTA, County of KANABEC

At the corner location shown on the sketch:  
 IN OCTOBER 2005 FOUND THIS MONUMENT  
 AND ESTABLISHED G.P.S. COORDINATES ON ITS LOCATION.

Kanabec County U.S. Survey Feet Coordinates  
 NAD 1983, HARN 1996 Adjustment  
 Obtained by RTK GPS Observation  
 Northing= 179646.04  
 Easting= 406845.09  
 Note: NAD 1983, HARN 1996 Adjustment  
 coordinates are NOT compatible with  
 NAD 1983 coordinates  
 Note: 1 Meter=3937/1200 U.S. Survey Feet

## SKETCH OF REFERENCE TIES



Statement of evidence relative to this corner location is on back of page.

I hereby certify that this document and the data contained herein was prepared by me or under my direct supervision.

Ernest J. Rud 1-23-2006  
 Signature Date

Registration No. Minn No 9808

- Land Surveyor,     Professional Engineer  
 County Surveyor,     County Engineer

### OFFICE OF THE COUNTY RECORDER

County of \_\_\_\_\_

I hereby certify that this document was filed in the County Recorder's office at \_\_\_\_\_ M. on the \_\_\_\_\_ day of \_\_\_\_\_ A.D., 20\_\_\_\_

County Recorder \_\_\_\_\_  
 BY \_\_\_\_\_ Deputy

**DOCUMENT NO.** \_\_\_\_\_

## STATEMENT OF EVIDENCE

ALL OF THE ORIGINAL BEARING TREES ARE NOW GONE.

THERE IS A SURVEY ON FILE AT THE COUNTY RECORDERS OFFICE DATED 1899 BY NESS STODIN, WHICH STARTS AT THE SOUTH QUARTER CORNER OF SECTION 13 AND RUNS EAST 80 RODS, NORTH 40 RODS, EAST 80 RODS, SOUTH 40 RODS TO THE SOUTHEAST CORNER OF SECTION 13, BUT DOES NOT SHOW WHAT WAS FOUND OR SET AT THESE CORNERS.

IN AUGUST OF 1981, M.B. RUDE RAN A SURVEY NORTH 1 MILE, SOUTH 1 MILE, EAST 1/2 MILE AND WEST 1/2 MILE AND LOCATED THE EXISTING MONUMENTS.

THIS CORNER FALLS AT THE INTERSECTION OF ROADS EAST AND SOUTH AND FENCE LINES NORTH.

ON AUGUST 4TH, 1981 AN EXCAVATION WAS MADE WITH THE COUNTY BACKHOE AT THIS LOCATION. THE EXCAVATION WAS ~~WAS~~ 15 FEET SQUARE AND 2.5 FEET DEEP. NO EVIDENCE WAS FOUND IN THE EXCAVATION.

THE INTERSECTION OF ROADS EAST AND SOUTH AND FENCE LINE NORTH WAS ACCEPTED AS THE BEST AVAILABLE EVIDENCE OF THE ORIGINAL CORNER AND A 4" BY 17" CAST IRON MONUMENT WAS SET AT THIS LOCATION. THIS IS WITHIN 1 FOOT OF A PROPORTIONAL MEASUREMENT BETWEEN THE SOUTHEAST CORNER OF SECTION 24 AND THE NORTHEAST CORNER OF SECTION 13 AND IS 24 FEET WEST OF A STRAIGHT LINE.

ALL REFERENCE TIES WERE INTACT.

THE ROADWAY WAS REGRADED IN 1992, KANABEC COUNTY HIGHWAY DEPARTMENT LOCATED THE SECTION CORNER PRIOR TO CONSTRUCTION AND PLACED ADDITIONAL REFERENCES OUTSIDE OF THE NEW CONSTRUCTION LIMITS.

BEFORE THE ROADWAY WAS PAVED THE CORNER WAS RE-ESTABLISHED ACCORDING TO REFERENCES OBTAINED PREVIOUSLY. ADDITIONAL REFERENCES WERE ALSO PLACED.

IN OCTOBER 2005 THIS CORNER WAS RELOCATED AND KANABEC COUNTY COORDINATES WERE ESTABLISHED ON THIS POSITION USING G.P.S. EQUIPMENT.