

# CERTIFICATE OF LOCATION OF GOVERNMENT CORNER

WEST QUARTER Corner of Section 18, Township 40, Range 23, 4TH P.M.  
 STATE OF MINNESOTA, County of KANABEC

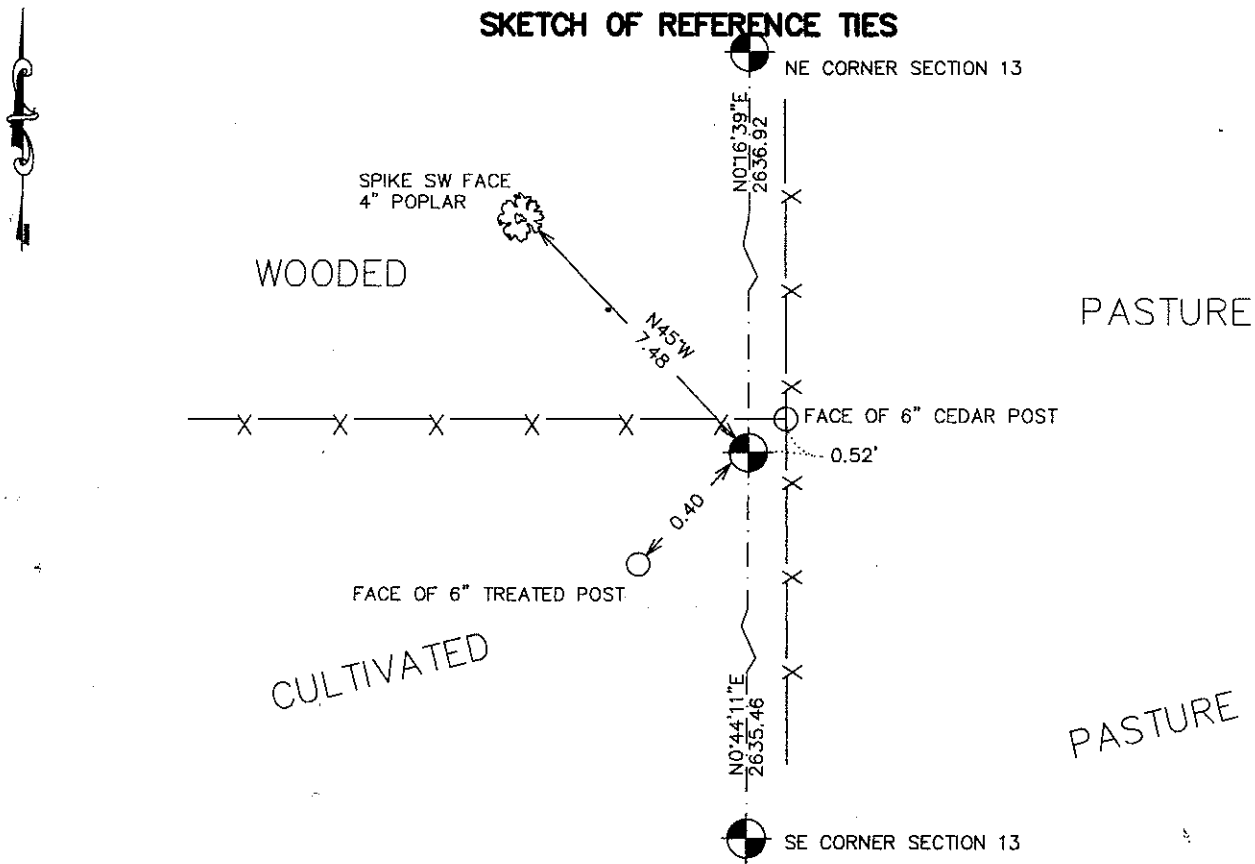
At the corner location shown on the sketch:  
**SET THIS MONUMENT  
 AND ESTABLISHED KANABEC COUNTY COORDINATES ON ITS LOCATION.**

Kanabec County U.S. Survey Feet Coordinates  
 NAD 1983, HARN 1996 Adjustment  
 Obtained by RTK GPS Observation

Northing= 182281.24  
 Easting= 406878.97

Note: NAD 1983, HARN 1996 Adjustment  
 coordinates are NOT compatible with  
 NAD 1983 coordinates  
 Note: 1 Meter=3937/1200 U.S. Survey Feet

### SKETCH OF REFERENCE TIES



Statement of evidence relative to this corner location is on back of page.

I hereby certify that this document and the data contained herein was prepared by me or under my direct supervision.

*Ernest Blud*  
 \_\_\_\_\_  
 Signature

10-05-2009  
 \_\_\_\_\_  
 Date

Registration No. 9808

- Land Surveyor,       Professional Engineer  
 County Surveyor,     County Engineer

### OFFICE OF THE COUNTY RECORDER

County of \_\_\_\_\_

I hereby certify that this document was filed in the County Recorder's office at \_\_\_\_\_ M. on the \_\_\_\_\_ day of \_\_\_\_\_ A.D., 20\_\_\_\_

County Recorder \_\_\_\_\_  
 BY \_\_\_\_\_ Deputy

**DOCUMENT NO.** \_\_\_\_\_

WEST QUARTER CORNER SECTION 18, T40, R23

**STATEMENT OF EVIDENCE**

THE ORIGINAL POST WAS SET BY DEPUTY SURVEYOR JOHN M. GLEY ON SEPTEMBER 26, 1849 AND TWO BEARING TREES ESTABLISHED. NO VISIBLE EVIDENCE REMAINS FOR THE CORNER OR BEARING TREES.

NO RECORDS OF ANY ROAD OPENINGS COULD BE FOUND AT THE COUNTY AUDITORS OFFICE.

THERE IS A SURVEY BY J.B. VICKEREY UNDATED BUT DONE SOMEWHERE AROUND 1900. THERE IS RECORDED ON PAGE 206 OF BOOK A OF SURVEYS. THIS SURVEY RAN FROM THE SOUTHEAST CORNER OF SECTION 36 TO THE NORTHEAST CORNER OF SECTION 13. NO RECORD OF WHAT WAS FOUND OR SET BUT EACH SECTION WAS RECORDED A 80 CHAINS. IN MAY 2003 E.G.RUD AND SONS RAN A SURVEY AROUND SECTION 13 TO LOCATE EXISTING MONUMENTS, LINES OF OCCUPATION, AND SEARCH AREAS. THIS CORNER FALLS AT THE INTERSECTION OF FENCES RUNNING NORTH, SOUTH, AND WEST. E.G.RUD SET A MONUMENT AT THE INTERSECTION OF THE FENCES AS THIS WAS THE BEST EVIDENCE OF THE PERPETUATION OF THIS CORNER. THIS POSITION FALLS WITHIN 0.70 FEET OF BEING ON A PROPORTIONATE DISTANCE BETWEEN THE NORTHEAST AND SOUTHEAST CORNERS OF SECTION 13. A # 7 REBAR WAS SET, TIES TAKEN, AND KANABEC COUNTY COORDINATES ESTABLISHED ON THIS CORNER.