

# CERTIFICATE OF LOCATION OF GOVERNMENT CORNER

SOUTHWEST Corner of Section 7, Township 40, Range 23, 4TH P.M.

STATE OF MINNESOTA, County of KANABEC

At the corner location shown on the sketch:  
FOUND A CAST IRON MONUMENT.

Kanabec County U.S. Survey Feet Coordinates  
NAD 1983, HARN 1996 Adjustment  
Obtained by RTK GPS Observation

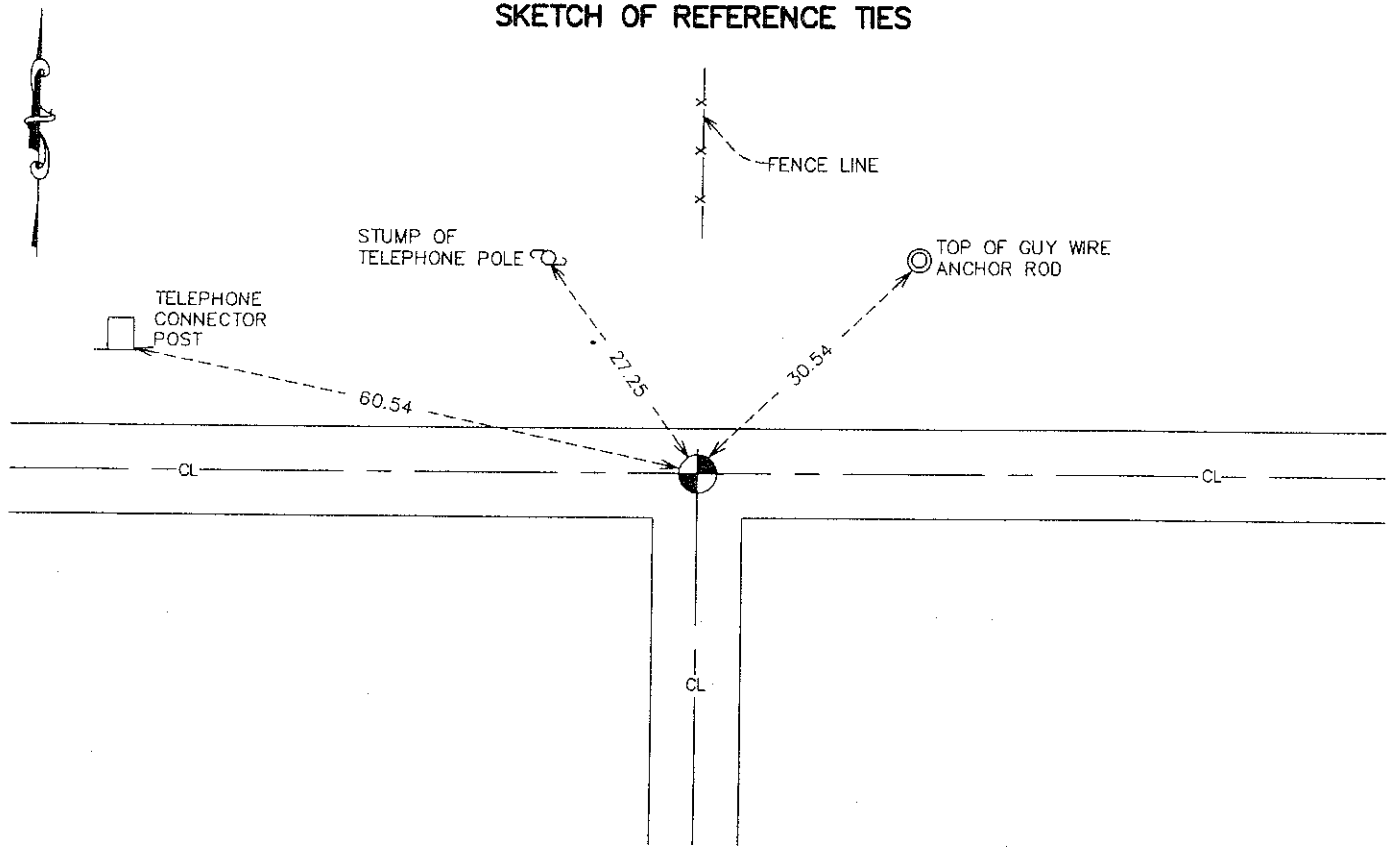
Northing= 184918.13

Easting= 406891.59

Note: NAD 1983, HARN 1996 Adjustment  
coordinates are NOT compatible with  
NAD 1983 coordinates

Note: 1 Meter=3937/1200 U.S. Survey Feet

## SKETCH OF REFERENCE TIES



Statement of evidence relative to this corner location is on back of page.

I hereby certify that this document and the data contained herein was prepared by me or under my direct supervision.

*Ernest J. Blund* 2-07-2008  
Signature Date

Registration No. 9808

Land Surveyor, [ ] Professional Engineer  
[ ] County Surveyor, [ ] County Engineer

## OFFICE OF THE COUNTY RECORDER

County of \_\_\_\_\_

I hereby certify that this document was filed in the County Recorder's office at \_\_\_\_\_ M. on the \_\_\_\_\_ day of \_\_\_\_\_ A.D., 20\_\_\_\_

County Recorder \_\_\_\_\_

BY \_\_\_\_\_ Deputy

DOCUMENT NO. \_\_\_\_\_

SOUTHWEST CORNER SECTION 7, TOWNSHIP 40, RANGE 23

**STATEMENT OF EVIDENCE**

THE ORIGINAL GOVERNMENT CORNER POST WAS SET BY DEPUTY SURVEYOR JOHN M. GIAY ON SEPTEMBER 28, 1849 AND 4 BEARING TREES WERE ESTABLISHED. NO EVIDENCE FOR THE CORNER POST OR BEARING TREES REMAIN.

(1970)  
IN 1970 FRANK KVIDERA FOUND AN IRON PIPE WITH A WOOD HANDLE OVER A SANDSTONE WITH A CHISELED "X" DOWN 4.3 FEET. HE PLACED A CAST IRON MONUMENT AT THIS LOCATION.

(2006)  
IN 2006 E.G. RUD & SONS, INC. ESTABLISHED KANABEC COUNTY COORDINATES WERE ESTABLISHED ON THIS POSITION USING GLOBAL POSITIONING SYSTEM (G.P.S.) EQUIPMENT.