

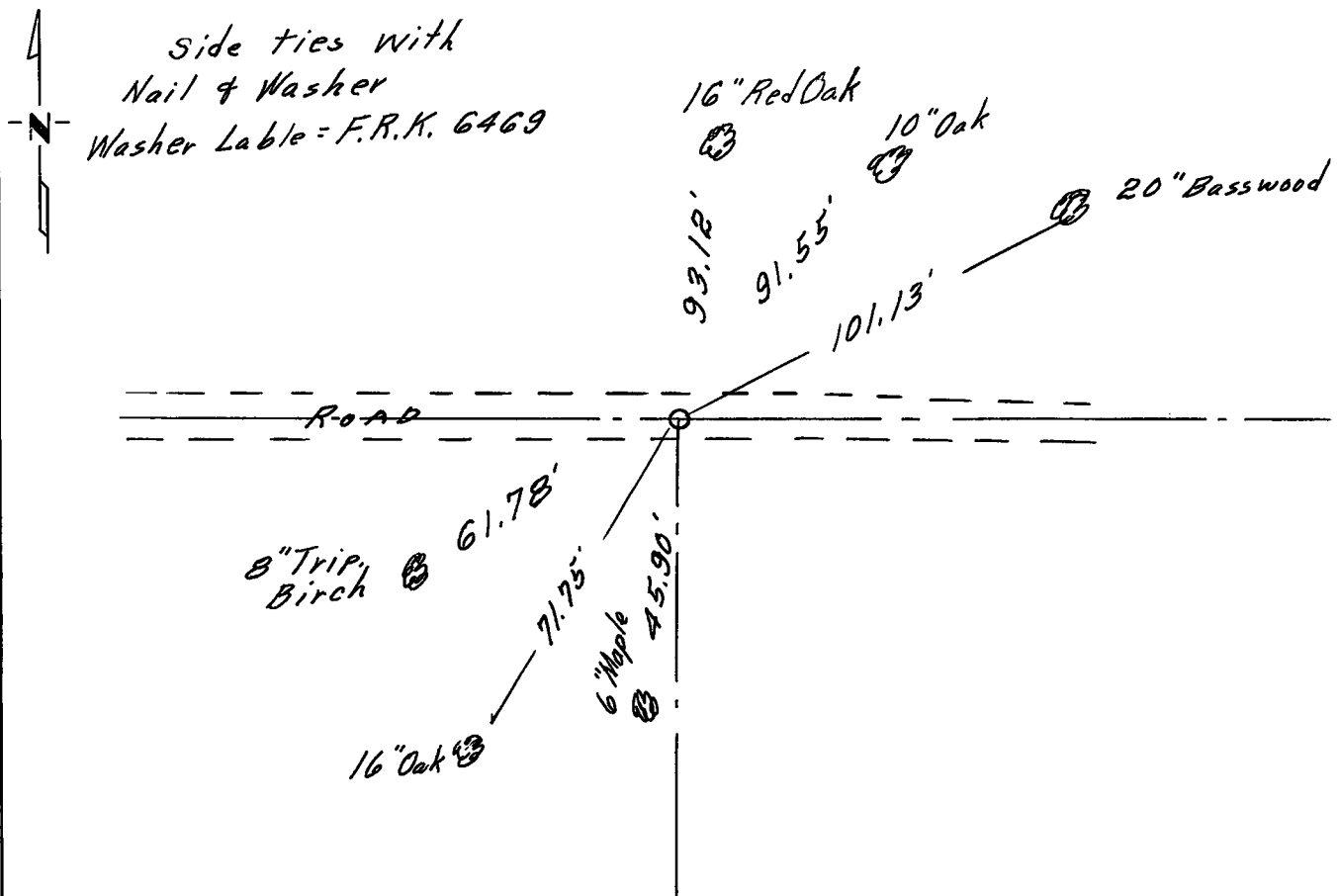
CERTIFICATE OF LOCATION OF GOVERNMENT CORNER

NORTHWEST Corner of Section 6, Township 40, Range 23, 4TH P.M.
STATE OF MINNESOTA, County of KANABEC

At the corner location shown on the sketch:

- On May 15, 1971 found a Large boulder on side
DATE
- left monument as found, lowered monument, removed monument (explain)
- On May 15, 1971 placed a 3/4" Iron pipe
DATE

SKETCH OF REFERENCE TIES



Statement of evidence relative to this corner location is on back of page.

I hereby certify that this document and the data contained herein was prepared by me or under my direct supervision.

J. R. Kwidera Feb 26, 1972
SIGNATURE DATE

Registration No. 6469

- Land Surveyor, Professional Engineer
- County Surveyor, County Engineer

OFFICE OF THE REGISTER OF DEEDS

County of Kanabec
I hereby certify that this document was filed in the Reg. of Deeds office at 3:45 P.M. on the 28 day of February A.D., 19 72
Register of Deeds Jessie J. Nelson

By _____, Deputy

DOCUMENT NO. _____

Statement of Evidence:

Resurvey ties from Register of Deeds gave a Basswood as only possible remaining tie. After very extensive digging, found large boulder elongated lying flat in rebuilt roadbed. The position of this boulder checked prorated government distances to the South as well as being on a fence line to the South and also checking distance and bearing to Basswood reference tree.

Original tie

8" Basswood N47E 100.9

New Side tie

20" Basswood 101.13'