

# CERTIFICATE OF LOCATION OF GOVERNMENT CORNER

NORTHEAST Corner of Section 3, Township 40, Range 23, 4TH P.M.

STATE OF MINNESOTA, County of KANABEC

At the corner location shown on the sketch:  
 FOUND MONUMENT  
 AND ESTABLISHED G.P.S. COORDINATES ON ITS LOCATION.

Kanabec County U.S. Survey Feet Coordinates  
 NAD 1983, HARN 1996 Adjustment  
 Obtained by RTK GPS Observation

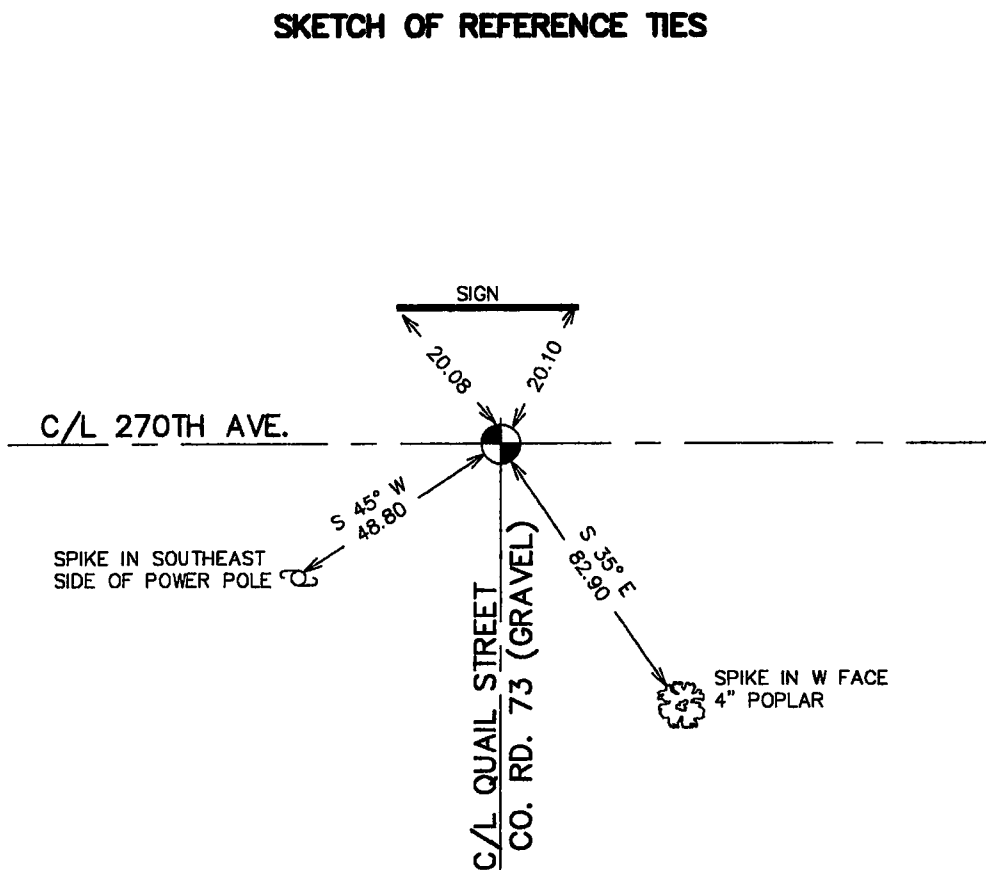
Northing= 191673.70

Easting= 427718.90

Note: NAD 1983, HARN 1996 Adjustment  
 coordinates are NOT compatible with  
 NAD 1983 coordinates

Note: 1 Meter=3937/1200 U.S. Survey Feet

### SKETCH OF REFERENCE TIES



Statement of evidence relative to this corner location is on back of page.

I hereby certify that this document and the data contained herein was prepared by me or under my direct supervision.

Ernest Blud 9-11-2006  
 Signature Date

Registration No. Minn No 9808

Land Surveyor,  Professional Engineer

County Surveyor,  County Engineer

### OFFICE OF THE COUNTY RECORDER

County of Kanabec

I hereby certify that this document was filed in the County Recorder's office at 8:00 A.M. on the 13<sup>th</sup> day of Sept A.D., 2006

County Recorder Rhonda Olson

BY \_\_\_\_\_ Deputy

DOCUMENT NO. \_\_\_\_\_

## NORTHEAST CORNER SECTION 3, T40, R23

### STATEMENT OF EVIDENCE

THE ORIGINAL CORNER WAS SET BY DEPUTY SURVEYOR JOHN M. GLEY IN SEPTEMBER 1851. THE ORIGINAL CORNER AND BEARING TREES NO LONGER REMAIN.

NO RECORDS OF SUBSEQUENT SURVEYS WOULD BE FOUND AT THE KANABEC COUNTY COURT HOUSE.

IN JULY A SURVEY WAS MADE BY E.G. RUD AND SONS AROUND SECTIONS 1, 2, 11, AND 12 TO TIE INTO LINES OF OCCUPATION AND EXISTING MONUMENTATION. THIS CORNER FALLS AT THE INTERSECTION OF A GRAVEL ROAD RUNNING EAST AND WEST AND A GRAVEL ROAD RUNNING SOUTH.

ON JULY 11 2006 AN EXCAVATION WAS MADE 12" INTO NATURAL GROUND (PEAT). AT 6" INTO THE PEAT A 1" X 2" WOOD STAKE WAS FOUND 4" BELOW ROAD SURFACE. SEVERAL STONES WERE ENCOUNTERED BUT THESE MUST HAVE BEEN USED TO BRIDGE THE UNSTABLE SOIL. THE WOOD HUB FIT THE CENTERLINE'S OF BOTH ROADS. A MONUMENT WAS SET ON A LINE BETWEEN THE SOUTHWEST AND SOUTHEAST CORNERS OF SECTION 36, TOWNSHIP 41 RANGE 23 AND THE NORTHERLY EXTENSION OF THE EAST LINE OF SECTION 3. TIES WERE TAKEN AND KANABEC COUNTY COORDINATES ESTABLISHED ON THIS POSITION.

*This position fell 0.7' from E.E. & the 1"x2" wood hub.*