

CERTIFICATE OF LOCATION OF GOVERNMENT CORNER

NORTH QUARTER Corner of Section 2, Township 40, Range 23, 4TH P.M.

STATE OF MINNESOTA, County of KANABEC

At the corner location shown on the sketch:
SET REBAR WITH ALUMINUM CAP
AND ESTABLISHED G.P.S. COORDINATES ON ITS LOCATION.

Kanabec County U.S. Survey Feet Coordinates
NAD 1983, HARN 1996 Adjustment
Obtained by RTK GPS Observation

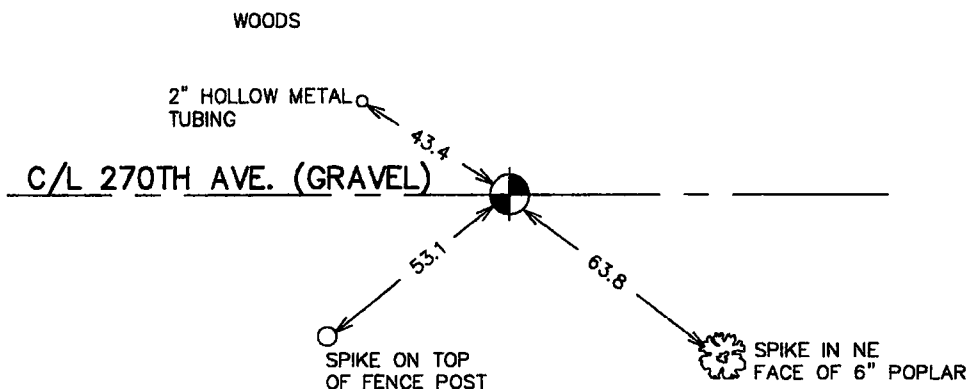
Northing= 191664.65

Easting= 430362.58

Note: NAD 1983, HARN 1996 Adjustment
coordinates are NOT compatible with
NAD 1983 coordinates

Note: 1 Meter=3937/1200 U.S. Survey Feet

SKETCH OF REFERENCE TIES



Statement of evidence relative to this corner location is on back of page.

I hereby certify that this document and the data contained herein was prepared by me or under my direct supervision.

Ernest Rud
Signature

9-11-2006
Date

Registration No. Minn No 9808

Land Surveyor, Professional Engineer

County Surveyor, County Engineer

OFFICE OF THE COUNTY RECORDER

County of Kanabec

I hereby certify that this document was filed in the County Recorder's office at 8:00 A.M. on the

13th day of Sept A.D., 2006

County Recorder Rhonda Olson

BY _____ Deputy

DOCUMENT NO. _____

NORTH QUARTER CORNER SECTION 2, T40, R23

STATEMENT OF EVIDENCE

THIS CORNER WAS NOT SET AS IT FALLS ON THE CORRECTION. LINE BETWEEN TOWNSHIP 40 AND TOWNSHIP 41.

NO RECORDS OF ANY SUBSEQUENT SURVEYS COULD BE FOUND AT THE KANABEC COUNTY COURT HOUSE.

IN JUNE, 2006 E.G. RUD RAN A SURVEY AROUND SECTION 1, 2, 11 AND 12. A #7 REBAR WITH AN ALUMINUM CAP WAS SET AT MIDWAY BETWEEN THE NORTHWEST AND NORTHEAST CORNERS OF SECTION 2 AND ON LINE BETWEEN THE SOUTHWEST CORNER AND SOUTH QUARTER CORNER OF SECTION 31, TOWNSHIP 41, RANGE 22.

WE TOOK TIES AND ESTABLISHED KANABEC COUNTY COORDINATES ON THE MONUMENT USING G.P.S. EQUIPMENT.