

4023014

CERTIFICATE OF LOCATION OF GOVERNMENT CORNER

NORTH QUARTER Corner of Section 1, Township 40, Range 23, 4TH P.M.

STATE OF MINNESOTA, County of KANABEC

At the corner location shown on the sketch:

SET # 7 REBAR WITH ALUMINUM CAP
AND ESTABLISHED G.P.S. COORDINATES ON ITS LOCATION.

Kanabec County U.S. Survey Feet Coordinates
NAD 1983, HARN 1996 Adjustment
Obtained by RTK GPS Observation

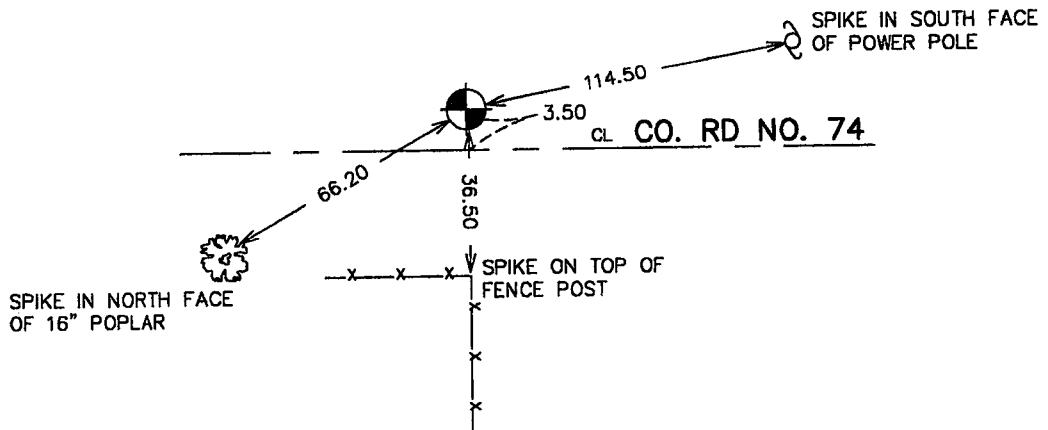
Northing= 191641.66

Easting= 435630.35

Note: NAD 1983, HARN 1996 Adjustment
coordinates are NOT compatible with
NAD 1983 coordinates

Note: 1 Meter=3937/1200 U.S. Survey Feet

SKETCH OF REFERENCE TIES



Statement of evidence relative to this corner location is on back of page.

I hereby certify that this document and the data contained herein was prepared by me or under my direct supervision.

Ernest Blud
Signature

9-11-2006
Date

Registration No. Min No 9808

Land Surveyor, Professional Engineer

County Surveyor, County Engineer

OFFICE OF THE COUNTY RECORDER

County of Kanabec

I hereby certify that this document was filed in the County Recorder's office at 8:00A M. on the

13th day of Sept A.D., 2006

County Recorder Rhonda Olson

BY _____ Deputy

DOCUMENT NO. _____

NORTH QUARTER CORNER SECTION 1, T40, R23

STATEMENT OF EVIDENCE

THE ORIGINAL SURVEY WAS DONE ON SEPTEMBER 29, 1851 BY DEPUTY SURVEYOR JOHN M. GLEY. NO CORNER WAS SET PER HIS NOTES AS THIS FALLS ON A CORRECTION LINE. NO INFORMATION ON SUBSEQUENT SURVEYS WERE FOUND AT THE COUNTY OFFICES.

IN JUNE 2006 WE RAN A SURVEY AROUND SECTIONS 1, 2, 11, AND 12 TO LOCATE EXISTING MONUMENTATION AND OCCUPATION LINES.

ON JULY 11, 2006 AN EXCAVATION WAS MADE AT THIS LOCATION WHICH FALLS ON THE CENTERLINE OF AN EAST-WEST GRAVEL ROAD AND AN OLD FENCE LINE RUNNING SOUTH. NO EVIDENCE WAS FOUND TO RE-ESTABLISH THIS CORNER.

THEREFORE WE SET THIS ON LINE BETWEEN THE SOUTHWEST AND SOUTHEAST CORNERS OF SECTION 32, TOWNSHIP 41, RANGE 22 AND EQUAL DISTANCE FROM THE NORTHWEST AND NORTHEAST CORNERS OF SECTION 1.

WE SET A #7 REBAR WITH ALUMINUM CAP, TOOK TIES AND ESTABLISHED KANABEC COUNTY COORDINATES ON THE MONUMENT.