

# CERTIFICATE OF LOCATION OF GOVERNMENT CORNER

NORTHEAST Corner of Section 1, Township 40, Range 23, 4TH P.M.

STATE OF MINNESOTA, County of KANABEC

At the corner location shown on the sketch:  
On 01/28/2003 Found a Kanabec County Monument.

Kanabec County U.S. Survey Feet Coordinates  
NAD 1983, HARN 1996 Adjustment  
Obtained by RTK GPS Observation

Northing= 191630.984

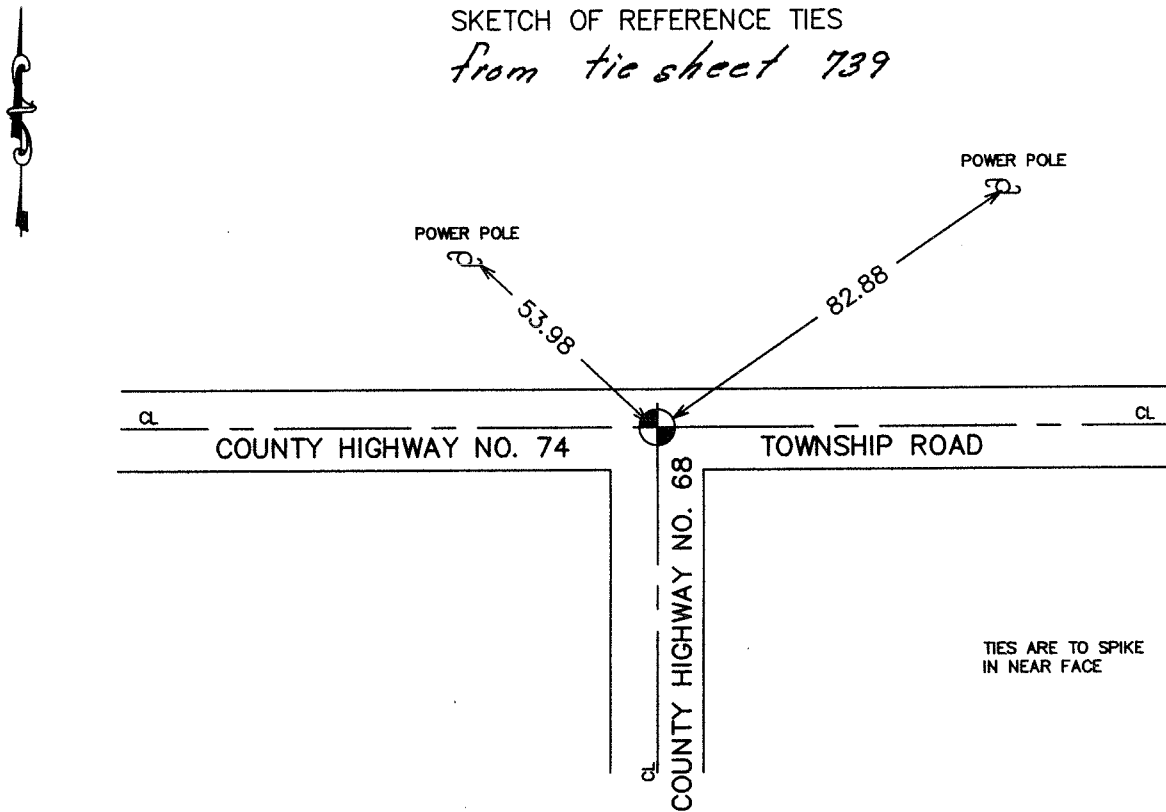
Easting= 438254.459

Note: NAD 1983, HARN 1996 Adjustment  
coordinates are NOT compatible with  
NAD 1983 coordinates

Note: 1 Meter=3937/1200 U.S. Survey Feet

### SKETCH OF REFERENCE TIES

*from tie sheet 739*



Statement of evidence relative to this corner location is on back of page.

I hereby certify that this document and the data contained herein was prepared by me or under my direct supervision.

Ernest J. Reed  
Signature

5-19-2004  
Date

Registration No. 9808

Land Surveyor, [ ] Professional Engineer

[ ] County Surveyor, [ ] County Engineer

### OFFICE OF THE COUNTY RECORDER

County of \_\_\_\_\_

I hereby certify that this document was filed in the County Recorder's office at \_\_\_\_\_ M. on the \_\_\_\_\_ day of \_\_\_\_\_ A.D., 20 \_\_\_\_\_

\_\_\_\_\_ day of \_\_\_\_\_ A.D., 20 \_\_\_\_\_

County Recorder \_\_\_\_\_

BY \_\_\_\_\_ Deputy

DOCUMENT NO. \_\_\_\_\_

STATEMENT OF EVIDENCE  
(FROM TIE SHEET 739)

All of the original bearing trees are now gone.

There is no resurvey data on file for this corner. There is a town road order dated 1910 along the north line of Section 6, Township 40, Range 22, and a road order date 1902 along the west line of Township 40, Range 22, to the southwest corner of Section 30, Township 40, Range 22.

In January of 1986, we ran a survey along the north line of Township 40, Range 22 to locate the existing monuments and lines of occupation and to search the area.

This corner falls in the intersection of existing roads east, west and south.

This location has been cut in road construction, so no excavation was made.

I set this corner by single proportional measurement between the southeast and southwest corners of Section 32, Township 41, Range 22. This location fits the roads per the town road orders.

(2003)

On January 28, 2003, we established Kanabec County coordinates on this corner using G.P.S. equipment.