

CERTIFICATE OF LOCATION OF GOVERNMENT CORNER

NORTHEAST Corner of Section 12, Township 40, Range 23, 4TH P.M.

STATE OF MINNESOTA, County of KANABEC

At the corner location shown on the sketch:
On 01/28/2003 Found a Kanabec County Monument.

Kanabec County U.S. Survey Feet Coordinates
NAD 1983, HARN 1996 Adjustment
Obtained by RTK GPS Observation

Northing= 190249.226

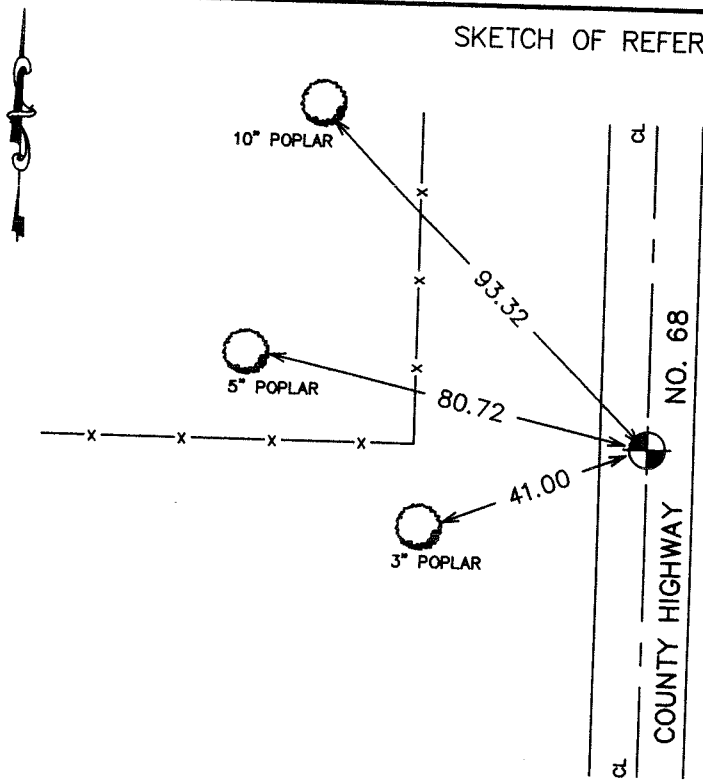
Easting= 438259.546

Note: NAD 1983, HARN 1996 Adjustment
coordinates are NOT compatible with
NAD 1983 coordinates

Note: 1 Meter=3937/1200 U.S. Survey Feet

SKETCH OF REFERENCE TIES

from tie sheet 702



TIES ARE TO SPIKE IN BLAZE
IN NEAR FACE

Statement of evidence relative to this corner location is on back of page.

I hereby certify that this document and the data contained herein was prepared by me or under my direct supervision.

Ernest J. Reed
Signature

5-19-2004
Date

Registration No. 9808

Land Surveyor, Professional Engineer

County Surveyor, County Engineer

OFFICE OF THE COUNTY RECORDER

County of _____

I hereby certify that this document was filed in the County Recorder's office at _____ M. on the

_____ day of _____ A.D., 20__

County Recorder _____

BY _____ Deputy

DOCUMENT NO. _____

STATEMENT OF EVIDENCE
(FROM TIE SHEET 702)

All of the original bearing trees are now gone.

In 1923, the Kanabec County Surveyor, George H. Jenks, set a stone marked with a "+" cut into it at this corner per the corner certificate on file at the County Recorder's Office.

In July of 1985, we ran a survey from the northeast corner of Section 24 north to the township line to locate the existing monuments and lines of occupation and to search the area.

This corner falls in a north-south road and fence lines west.

We made an excavation with a backhoe at this location, but did not find the stone marked with the "+" per the certificate on file. The excavation was 12 feet wide east-west and 25 feet long north and south, 4 feet deep, one foot into the natural ground.

The center of the north-south road and fence line west extended east was accepted as the best available evidence of the perpetuated location of this corner.

(2003)

On January 28, 2003, we established Kanabec County coordinates on this corner using G.P.S. equipment.