

CERTIFICATE OF LOCATION OF GOVERNMENT CORNER

 EAST QUARTER Corner of Section 12 , Township 40 , Range 23 , 4TH P.M.

STATE OF MINNESOTA, County of KANABEC

At the corner location shown on the sketch:
On 01/28/2003 Found a Kanabec County Monument.

Kanabec County U.S. Survey Feet Coordinates
NAD 1983, HARN 1996 Adjustment
Obtained by RTK GPS Observation

Northing= 187599.556

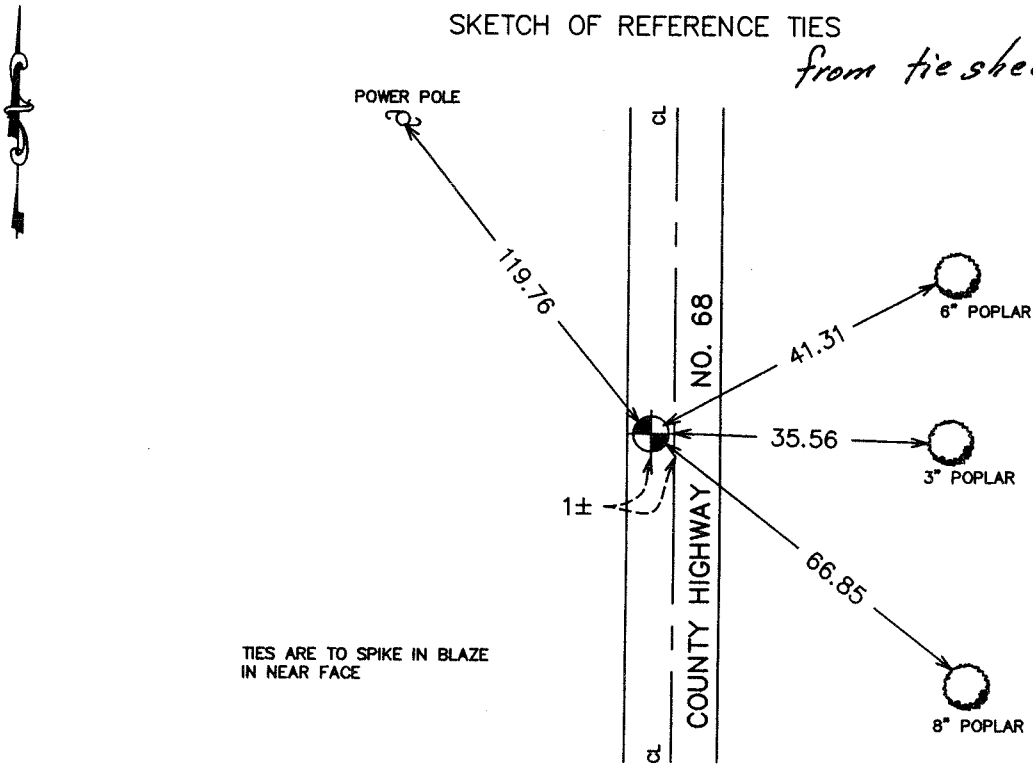
Easting= 438248.653

Note: NAD 1983, HARN 1996 Adjustment
coordinates are NOT compatible with
NAD 1983 coordinates

Note: 1 Meter=3937/1200 U.S. Survey Feet

SKETCH OF REFERENCE TIES

from tiesheet 705



TIES ARE TO SPIKE IN BLAZE
IN NEAR FACE

Statement of evidence relative to this corner location is on back of page.

I hereby certify that this document and the data contained herein was prepared by me or under my direct supervision.

Ernest J. Reed

Signature

5-19-2007

Date

Registration No. 9808

Land Surveyor, [] Professional Engineer

[] County Surveyor, [] County Engineer

OFFICE OF THE COUNTY RECORDER

County of _____

I hereby certify that this document was filed in the County Recorder's office at _____ M. on the

_____ day of _____ A.D., 20 _____

County Recorder _____

BY _____ Deputy

DOCUMENT NO. _____

STATEMENT OF EVIDENCE
(FROM TIE SHEET 705)

All of the original bearing trees are now gone.

In 1919, the Kanabec County Surveyor, George H. Jenks, set a stone marked with a "+" at this corner per the corner certificate on file at the County Recorder's Office.

In July of 1985, we ran a survey from the northeast corner of Section 24 north to the township line to locate the existing monuments and lines of occupation and to search the area.

This corner falls in a north-south road.

At proportional measurement we made an excavation with a backhoe. The excavation was 15 feet by 15 feet, 3 feet deep, but did not find the stone marked with the "+".

We set this corner by single proportional measurement between the northeast and southeast corners of Section 12.

(2003)

On January 28, 2003, we established Kanabec County coordinates on this corner using G.P.S. equipment.