

CERTIFICATE OF LOCATION OF GOVERNMENT CORNER

NORTHEAST Corner of Section 24, Township 40, Range 23, 4TH P.M.

STATE OF MINNESOTA, County of KANABEC

At the corner location shown on the sketch:
On 01/28/2003 Found a Kanabec County Monument.

Kanabec County U.S. Survey Feet Coordinates
NAD 1983, HARN 1996 Adjustment
Obtained by RTK GPS Observation

Northing= 179670.709

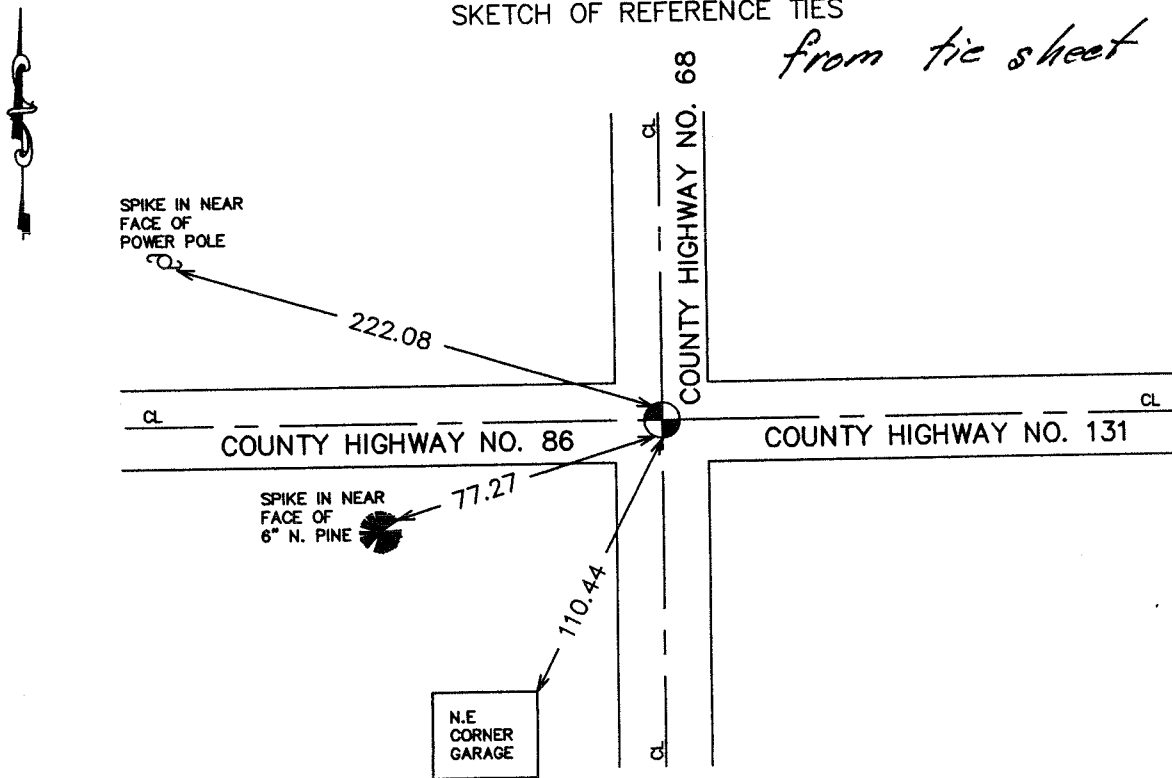
Easting= 438269.513

Note: NAD 1983, HARN 1996 Adjustment
coordinates are NOT compatible with
NAD 1983 coordinates

Note: 1 Meter=3937/1200 U.S. Survey Feet

SKETCH OF REFERENCE TIES

from tie sheet 703



Statement of evidence relative to this corner location is on back of page.

I hereby certify that this document and the data contained herein was prepared by me or under my direct supervision.

Ernest J. Red
Signature

5-19-2007
Date

Registration No. 9808

Land Surveyor, [] Professional Engineer

[] County Surveyor, [] County Engineer

OFFICE OF THE COUNTY RECORDER

County of _____

I hereby certify that this document was filed in the County Recorder's office at _____ M. on the _____ day of _____ A.D., 20____

County Recorder _____

BY _____ Deputy

DOCUMENT NO. _____

STATEMENT OF EVIDENCE
(FROM TIE SHEET 703)

All of the original bearing trees are now gone.

In 1923, the Kanabec County Surveyor, George H. Jenks, found an old corner post and set a sandstone marked with a "+" and made new ties to a pine stump and a telephone pole. These ties are now gone. See the corner certificate on file at the County Recorder's Office.

In July of 1985, we ran a survey from the corner north to the township line to locate existing monuments, lines of occupation and to search the area.

This corner falls at the intersection of roads, north, south, east and west.

We made an excavation with a backhoe. The excavation was 15 feet deep east and west, 25 feet north and south, 3 feet deep, one foot into the natural ground, but did not find the sandstone marked with the "+". There was corduroy in place south of the center line, but from the center line north it appeared to have been removed in road construction.

The center line intersection of roads was accepted as the best available evidence of the perpetuated location of the original corner.

(2003)

On January 28, 2003, we established Kanabec County coordinates on this corner using G.P.S. equipment.