

CERTIFICATE OF LOCATION OF GOVERNMENT CORNER

EAST QUARTER Corner of Section 24, Township 40, Range 23, 4TH P.M.

STATE OF MINNESOTA, County of KANABEC

At the corner location shown on the sketch:
On 01/28/2003 Found a Kanabec County Monument.

Kanabec County U.S. Survey Feet Coordinates
NAD 1983, HARN 1996 Adjustment
Obtained by RTK GPS Observation

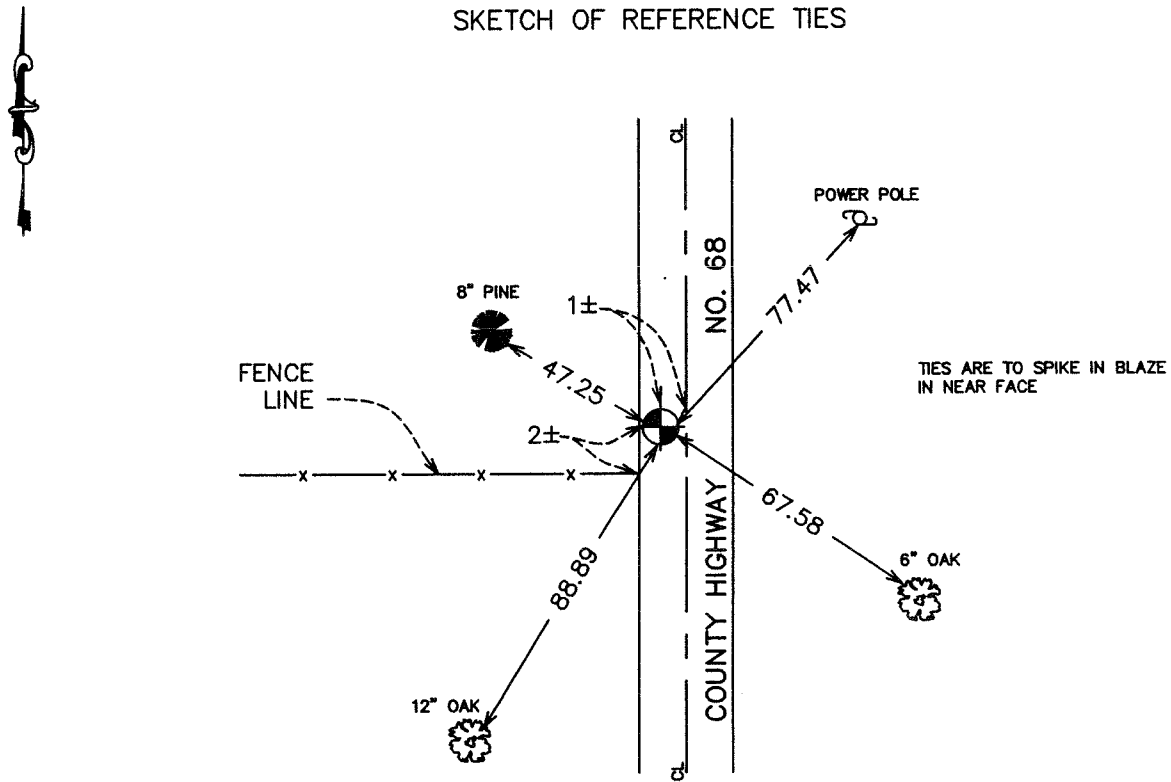
Northing= 177027.728

Easting= 438270.252

Note: NAD 1983, HARN 1996 Adjustment
coordinates are NOT compatible with
NAD 1983 coordinates

Note: 1 Meter=3937/1200 U.S. Survey Feet

SKETCH OF REFERENCE TIES



Statement of evidence relative to this corner location is on back of page.

I hereby certify that this document and the data contained herein was prepared by me or under my direct supervision.

Ernest Reed
Signature

5-19-2007
Date

Registration No. 9808

Land Surveyor, Professional Engineer

County Surveyor, County Engineer

OFFICE OF THE COUNTY RECORDER

County of _____

I hereby certify that this document was filed in the County Recorder's office at _____ M. on the

_____ day of _____ A.D., 20____

County Recorder _____

BY _____ Deputy

DOCUMENT NO. _____

STATEMENT OF EVIDENCE
(FROM TIE SHEET 738)

All of the original bearing trees are now gone.

There is no resurvey data on file for this corner. There is a town road order on file date in 1903, that establishes a town road from the northwest corner of Section 6, Township 40, Range 22, south along the town line to the southwest corner of Section 30, Township 40, Range 22.

In January of 1986, we ran a survey along the township line to locate the existing monuments, lines of occupation and to search the area.

There is an existing country road along the township line and fence line running west from this corner.

In June of 1986, we made an excavation with a backhoe at this corner. The excavation was 15 feet square, 3 feet deep, 1 foot into the natural ground. It was centered on the centerline of the north-south road and fence line west extended east. No evidence was found in the excavation.

I set this corner by single proportional measurement between the northeast and southeast corners of Section 24, Township 40, Range 23.

(2003)

On January 28, 2003, we established Kanabec County coordinates on this corner using G.P.S. equipment.