

# CERTIFICATE OF LOCATION OF GOVERNMENT CORNER

EAST QUARTER Corner of Section 25, Township 40, Range 23, 4TH P.M.  
 STATE OF MINNESOTA, County of KANABEC

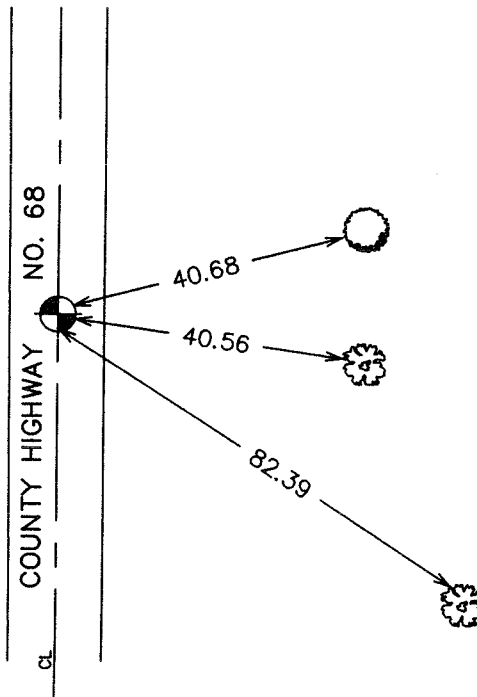
At the corner location shown on the sketch:  
 On 01/28/2003 Found a Kanabec County Monument.

Kanabec County U.S. Survey Feet Coordinates  
 NAD 1983, HARN 1996 Adjustment  
 Obtained by RTK GPS Observation  
 Northing= 171740.753  
 Easting= 438278.098  
 Note: NAD 1983, HARN 1996 Adjustment  
 coordinates are NOT compatible with  
 NAD 1983 coordinates  
 Note: 1 Meter=3937/1200 U.S. Survey Feet

## SKETCH OF REFERENCE TIES



TIES ARE TO SPIKE  
 IN BLAZE IN NEAR FACE



Statement of evidence relative to this corner location is on back of page.

I hereby certify that this document and the data contained herein was prepared by me or under my direct supervision.

*Ernest J. Red*  
Signature

5-27-2004  
Date

Registration No. 9808

Land Surveyor,      [ ] Professional Engineer

[ ] County Surveyor,      [ ] County Engineer

### OFFICE OF THE COUNTY RECORDER

County of \_\_\_\_\_

I hereby certify that this document was filed in the County Recorder's office at \_\_\_\_\_ M. on the \_\_\_\_\_ day of \_\_\_\_\_ A.D., 20\_\_\_\_

County Recorder \_\_\_\_\_

BY \_\_\_\_\_ Deputy

**DOCUMENT NO.** \_\_\_\_\_

STATEMENT OF EVIDENCE  
(FROM TIE SHEET 736)

All of the original government bearing trees are now gone.

There is no resurvey data on file for this corner.

There is a town road order dated in 1903 that establishes a town road from the northwest corner of Section 6, Township 40, Range 22, south on the town line to the southwest corner of Section 30, Township 40, Range 22.

In January of 1986, we ran a survey along the west line of Township 40, Range 22, to locate existing monuments, lines of occupation and to search the area.

This corner falls in an existing north-south road. There are no lines of occupation east or west.

In July of 1986, we made an excavation with a backhoe in the center of roads and proportional measurement between the northeast and southeast corners of Section 25, Township 40, Range 23. No evidence was found in the excavation.

I set this corner by single proportional measurement between the northeast and southeast corners of Section 25, Township 40, Range 23.

(2003)

On January 28, 2003, we established Kanabec County coordinates on this corner using G.P.S. equipment.