

CERTIFICATE OF LOCATION OF GOVERNMENT CORNER

E. 1/4 Corner of Section 36, Township 40, Range 23 4TH P.M.

STATE OF MINNESOTA, County of KANABEC

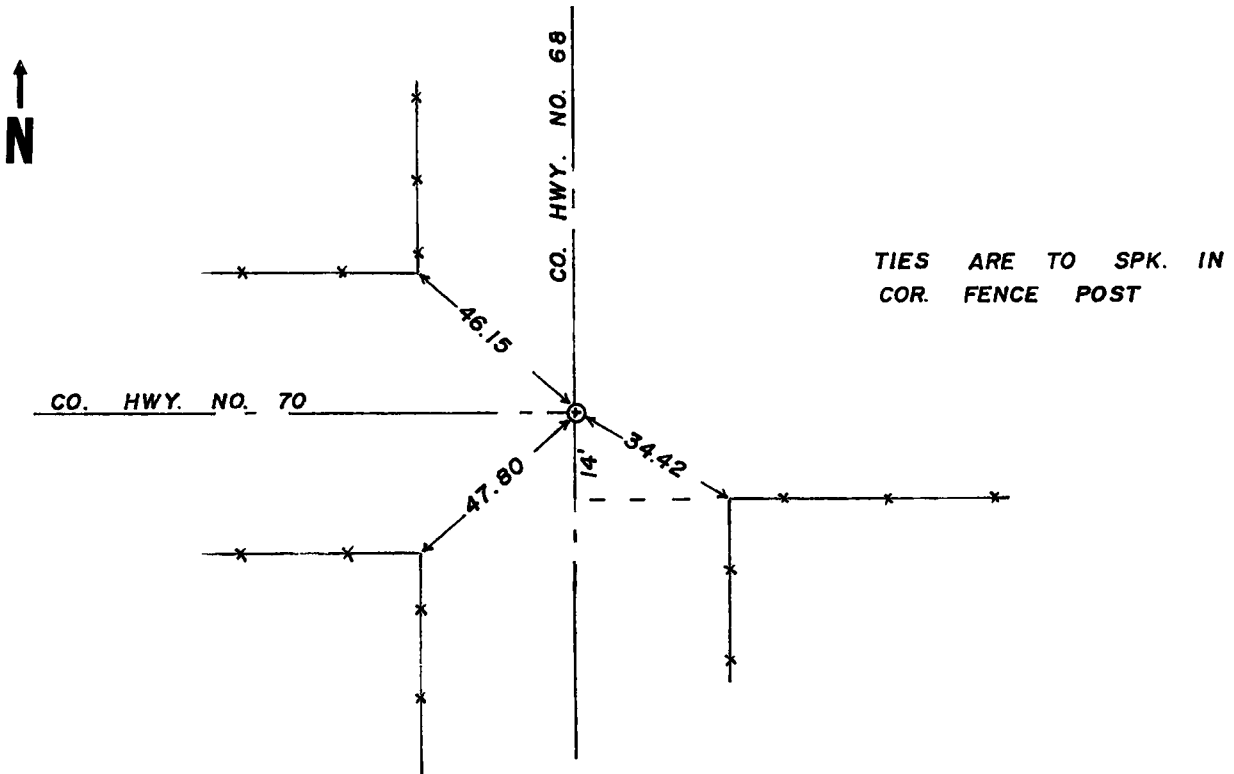
At the corner location shown on the sketch

On found a
Date

left monument as found, lowered monument, removed monument (explain)

On 6-18-86 placed a 7/8" x 24" CAPPED REBAR
Date

SKETCH OF REFERENCE TIES



D/34

Statement of evidence relative to this corner location is on back of page.

I hereby certify that this document and the data contained herein was prepared by me or under my direct supervision.

[Signature] 12-18-86
Signature Date

Registration No. 8195

Land Surveyor, County Surveyor,
 Professional Engineer County Engineer

OFFICE OF THE COUNTY RECORDER

County of Kanabec

I hereby certify that this document was filed in the

County Recorder's office at 10:30 A.M. on the

19 day of December A.D., 1986

County Recorder Velma J. Besser

By Deputy

DOCUMENT NO.

STATEMENT OF EVIDENCE

All of the original bearing trees are now gone.

There is a corner certificate on file in Kanabec County for this dated 1937, that shows an iron pin on top of an iron pin.

In January of 1986, we ran a survey along the west line of Township 40, Range 22, to locate the existing monuments, lines of occupation and to search the area.

This corner falls at the intersection of roads north-south and west.

In July of 1986, we made an excavation with a backhoe at this location. The excavation was 15 feet square, 3 feet deep centered on the center line intersection. No evidence of the iron pins from 1937 were found.

I accepted the center line intersection of roads as the best available evidence of the original corner location and set a 7/8" capped rebar to mark this corner. This location is 5.34 feet north and 0.83 feet east of a line and split location.