

CERTIFICATE OF LOCATION OF GOVERNMENT CORNER

NORTH QUARTER Corner of Section 7, Township 38, Range 25, 4TH P.M.

STATE OF MINNESOTA, County of KANABEC

At the corner location shown on the sketch:

FOUND THIS MONUMENT
AND ESTABLISHED G.P.S. COORDINATES ON ITS LOCATION.

Kanabec County U.S. Survey Feet Coordinates
NAD 1983, HARN 1996 Adjustment
Obtained by RTK GPS Observation

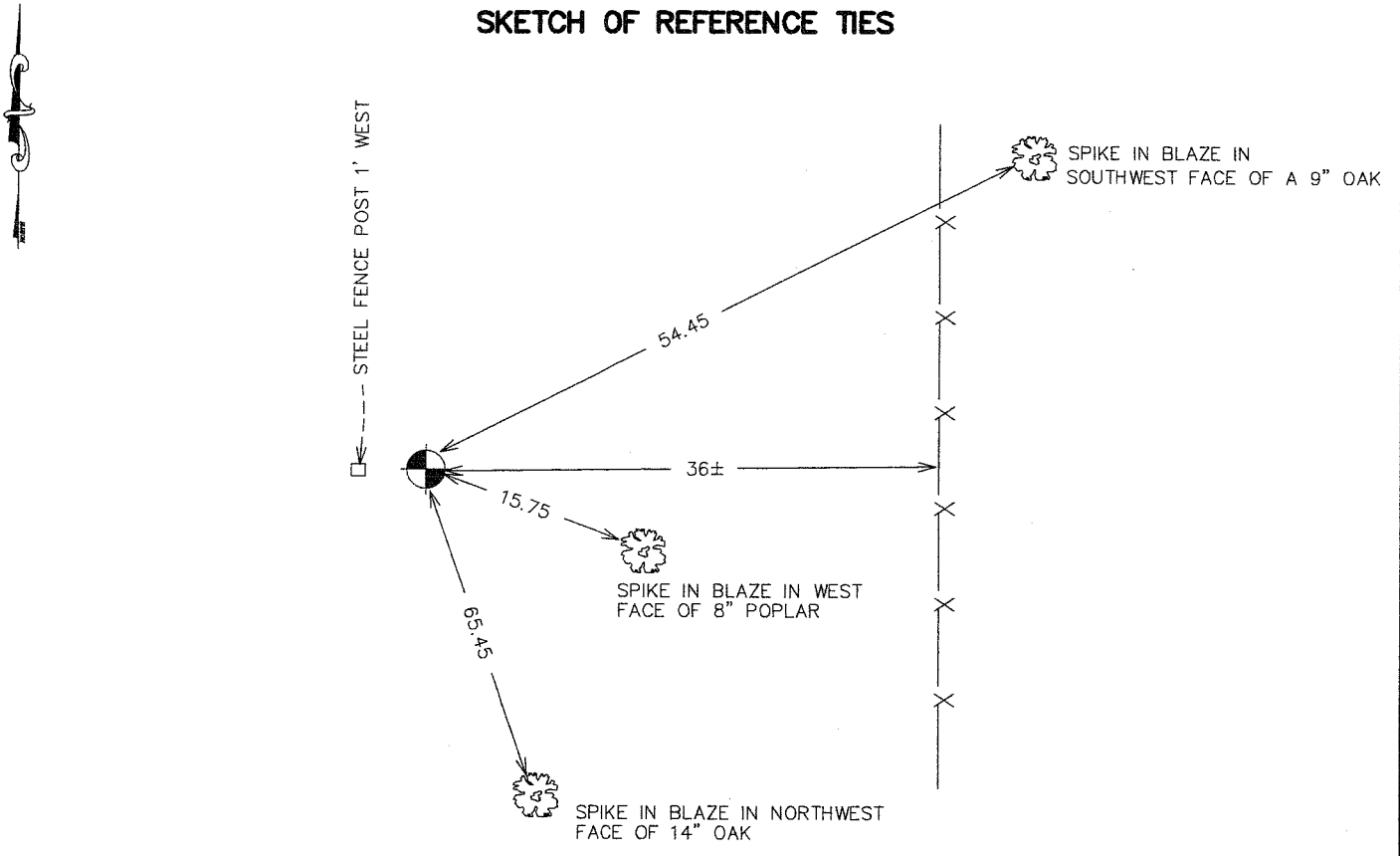
Northing= 128855.22

Easting= 345830.49

Note: NAD 1983, HARN 1996 Adjustment
coordinates are NOT compatible with
NAD 1983 coordinates

Note: 1 Meter=3937/1200 U.S. Survey Feet

SKETCH OF REFERENCE TIES



Statement of evidence relative to this corner location is on back of page.

I hereby certify that this document and the data contained herein was prepared by me or under my direct supervision.

Ernest J. Reed 3-19-2007
Signature Date

Registration No. Minn No 9808

Land Surveyor, Professional Engineer

County Surveyor, County Engineer

OFFICE OF THE COUNTY RECORDER

County of _____

I hereby certify that this document was filed in the County Recorder's office at _____ M. on the _____ day of _____ A.D., 20____

County Recorder _____

BY _____ Deputy

DOCUMENT NO. _____

NORTH QUARTER CORNER SECTION 7, T38, R25

STATEMENT OF EVIDENCE

ALL OF THE ORIGINAL BEARING TREES ARE NOW GONE.

THERE IS NO RESEARCH DATA ON FILE FOR THIS CORNER.

THE DEPARTMENT OF TRANSPORTATION'S RIGHT OF WAY MAP FOR STATE HIGHWAY NO. 23 SHOWS THIS CORNER ASSUMED AT THE INTERSECTION OF AN ABANDONED ROAD WEST AND SOUTH.

M.B. RUDE SET A 4" BY 17" CAST ALUMINUM MONUMENT BY PROPORTIONAL MEASUREMENTS BETWEEN THE NORTHWEST AND NORTHEAST CORNERS OF SECTION 7 IN JULY OF 1980.

THE OLD ROAD BED INTERSECTION IS ABOUT 19 FEET EAST OF THIS LOCATION. AN OLD NORTH-SOUTH FENCE LINE IS ABOUT 36 FEET EAST OF THIS LOCATION. USING THE PROPORTIONAL LOCATION THE FENCE LINE NORTH AT THE SIXTEENTH CORNER TO THE WEST IS ABOUT 17 FEET WEST, BUT IF YOU USED THE OLD ROAD BED OR THE OLD FENCE LINE THE FENCE AT THE SIXTEENTH CORNER WOULD BE 29 FEET TO 47 FEET WEST.

USING THE PROPORTIONAL LOCATION THE FENCE LINE RUNNING FROM THE SOUTH QUARTER CORNER NORTH TO THE CENTER OF THE SECTION WOULD FIT WITHIN ABOUT 3 FEET.

THE FENCE LINE NORTH AT THE SIXTEENTH CORNER BETWEEN THE NORTH QUARTER CORNER AND THE NORTHWEST CORNER FITS THE GOVERNMENT DISTANCE FROM THE NORTHWEST CORNER AND APPEARS TO HAVE BEEN BUILT BY MEASURING FROM THE NORTHWEST CORNER. THERE IS A 50 FOOT SURPLUS IN THE NORTH LINE OF SECTION 7 PUTTING THIS FENCE 17 FEET TO THE FAR WEST.

M.B. RUDE MADE AN EXCAVATION WITH THE BACKHOE AT THIS LOCATION, BUT NO EVIDENCE WAS FOUND.

THE PROPORTIONAL LOCATION WAS ACCEPTED AS THE BEST AVAILABLE LOCATION AS IT FITS THE OCCUPATION OF THE NORTH-SOUTH FENCE FROM THE CENTER SOUTH. MOST OF THE QUARTER CORNERS IN THIS AREA HAVE BEEN SET BY PROPORTIONAL MEASUREMENTS.

IN JULY OF 2005 E.G. RUD AND SONS FOUND THIS MONUMENT AND ESTABLISHED KANABEC COUNTY COORDINATES USING G.P.S. EQUIPMENT.