

CERTIFICATE OF LOCATION OF GOVERNMENT CORNER

EAST QUARTER Corner of Section 7, Township 38, Range 25, 4TH P.M.

STATE OF MINNESOTA, County of KANABEC

At the corner location shown on the sketch:

FOUND THIS MONUMENT
AND ESTABLISHED G.P.S. COORDINATES ON ITS LOCATION.

Kanabec County U.S. Survey Feet Coordinates
NAD 1983, HARN 1996 Adjustment
Obtained by RTK GPS Observation

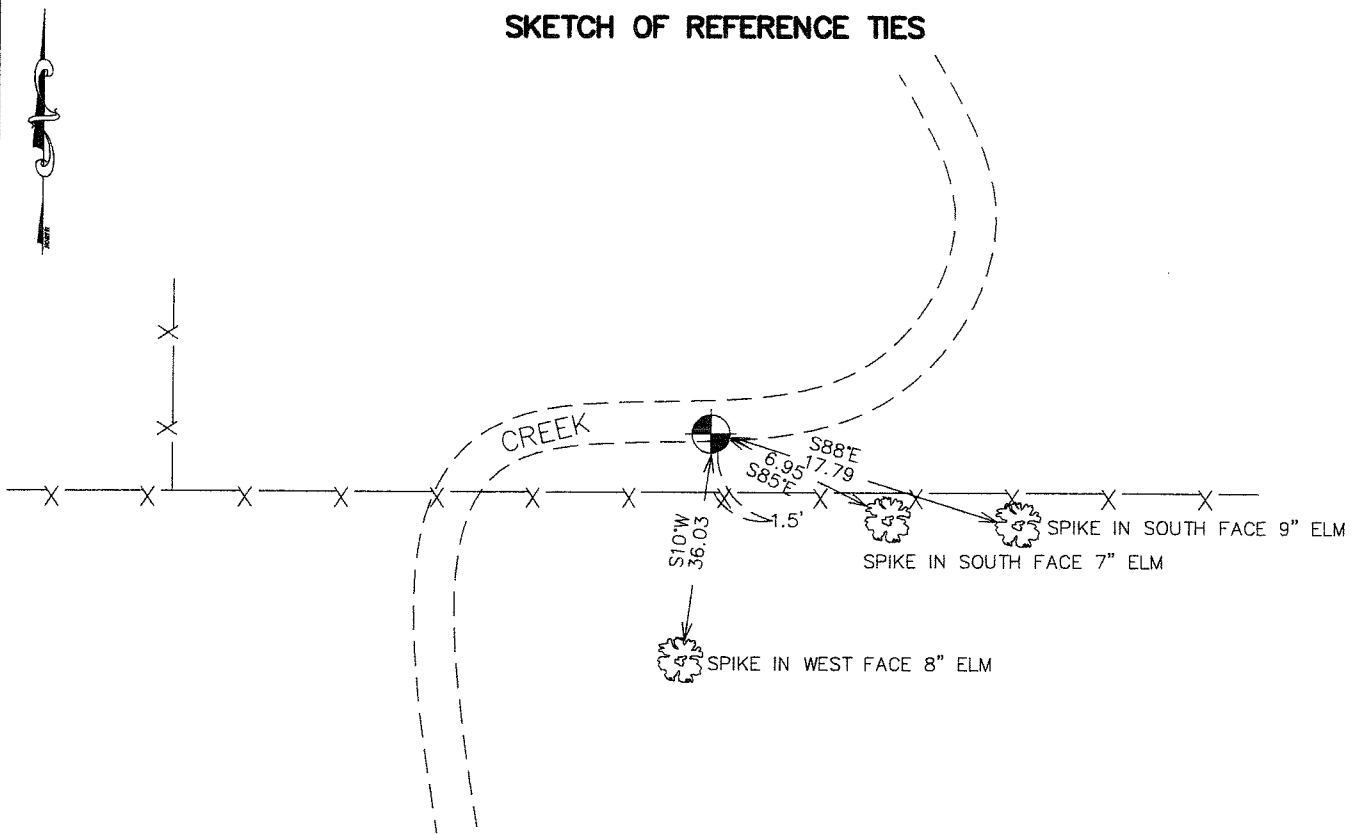
Northing= 126034.11

Easting= 348489.37

Note: NAD 1983, HARN 1996 Adjustment
coordinates are NOT compatible with
NAD 1983 coordinates

Note: 1 Meter=3937/1200 U.S. Survey Feet

SKETCH OF REFERENCE TIES



Statement of evidence relative to this corner location is on back of page.

I hereby certify that this document and the data contained herein was prepared by me or under my direct supervision.

Ernest Blud
Signature

3-24-2007
Date

OFFICE OF THE COUNTY RECORDER

County of _____

I hereby certify that this document was filed in the County Recorder's office at _____ M. on the _____ day of _____ A.D., 20____

County Recorder _____

BY _____ Deputy

DOCUMENT NO. _____

Registration No. Minn No 9808

Land Surveyor, [] Professional Engineer

[] County Surveyor, [] County Engineer

EAST QUARTER CORNER SECTION 7, T38, R25

STATEMENT OF EVIDENCE

THE ORIGINAL CORNER WAS SET AND 2 BEARING TREES NOTED BY DEPUTY SURVEYOR DANIEL HIGBEE ON DECEMBER 2, 1851. ANY PHYSICAL EVIDENCE TO THE CORNER AND BEARING TREES NO LONGER REMAIN. HIGBEE NOTED CROSSING A STREAM 3 CHAINS SOUTH OF A CREEK AND AT .25 CHAINS NORTH. HE NOTED A BEND IN THIS STREAM. THERE IS A ROAD OPENING ON FILE ALONG THE EAST LINE OF SECTION 7 DATED JANUARY 1930, BUT NO RECORD OF A SURVEY BEING DONE.

NO OTHER RECORDS OF A SURVEY ALONG THE EAST LINE OF SECTION 7 COULD BE FOUND AT KANABEC COUNTY.

IN FEBRUARY 2007 E.G. RUD AND SONS DID A SURVEY IN THE NORTHEAST QUARTER OF SECTION 7 AND HAD TO REESTABLISH THE EAST QUARTER CORNER S OF SECTION 7. THERE IS AN EAST-WEST FENCE CROSSING THE CREEK IN THE APPROXIMATE LOCATION OF THIS CORNER. THIS CORNER FALLS 1.5' NORTH OF THE EAST-WEST FENCE WHEN SET BY LOST METHODS AND ON THE SOUTH BANK OF THE CREEK.

A #7 REBAR WAS SET WITH AN ALUMINUM CAP ON TOP, TIES TAKEN AND KANABEC COUNTY COORDINATES ESTABLISHED ON THIS MONUMENT.