

CERTIFICATE OF LOCATION OF GOVERNMENT CORNER

S 1/4 Corner of Section 7, Township 38, Range 25, 4TH P.M.

STATE OF MINNESOTA, County of KANABEC

At the corner location shown on the sketch:
In July 2005 found a 2 3/4" X 19" cast iron monument.

Kanabec County U.S. Survey Feet Coordinates
NAD 1983, HARN 1996 Adjustment
Obtained by RTK GPS Observation

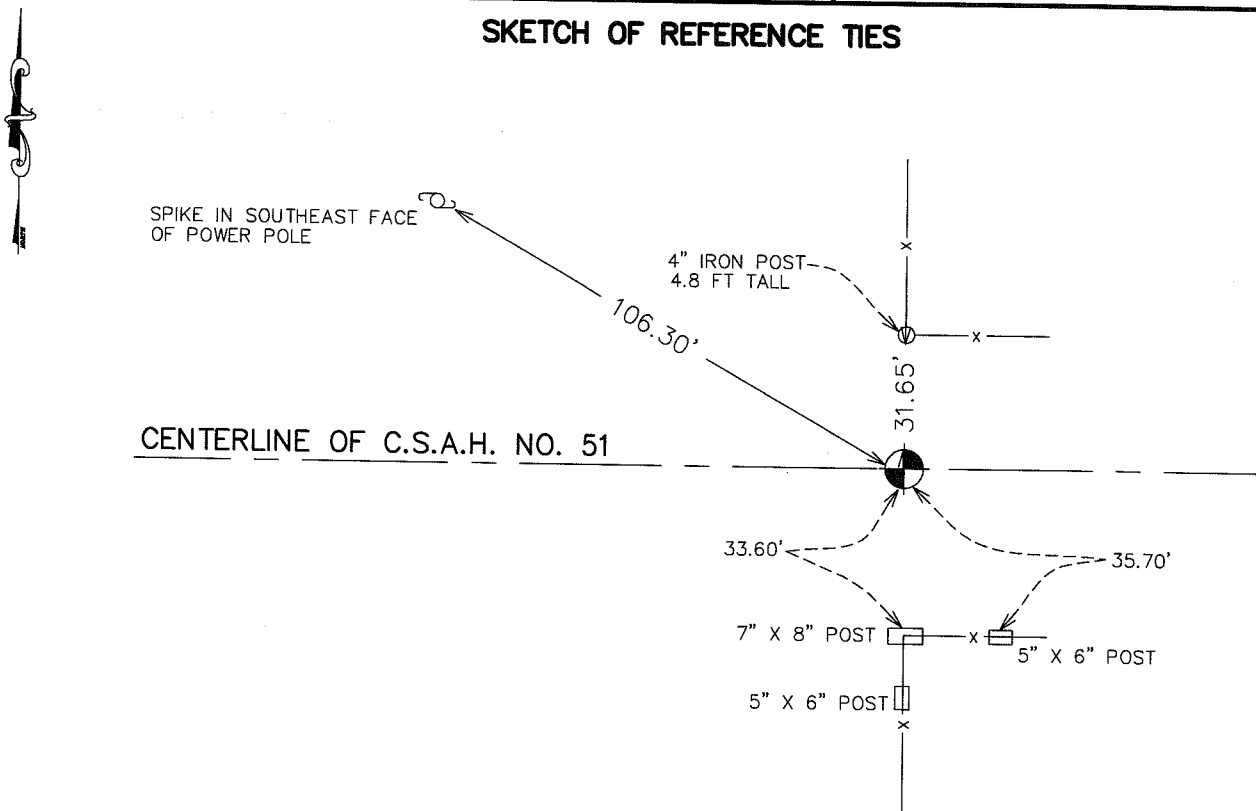
Northing= 123497.40

Easting= 345827.22

Note: NAD 1983, HARN 1996 Adjustment
coordinates are NOT compatible with
NAD 1983 coordinates

Note: 1 Meter=3937/1200 U.S. Survey Feet

SKETCH OF REFERENCE TIES



Statement of evidence relative to this corner location is on back of page.

I hereby certify that this document and the data contained herein was prepared by me or under my direct supervision.

Ernest J. Reed
Signature

9-19-05
Date

Registration No. 9808

Land Surveyor, Professional Engineer

County Surveyor, County Engineer

OFFICE OF THE COUNTY RECORDER

County of _____

I hereby certify that this document was filed in the County Recorder's office at _____ M. on the _____ day of _____ A.D., 20____

County Recorder _____

BY _____ Deputy

DOCUMENT NO. _____

STATEMENT OF EVIDENCE FROM TIE SHEET 560

ALL OF THE ORIGINAL BEARING TREES ARE NOW GONE.

THERE IS NO RE-SURVEY DATA ON FILE FOR THIS CORNER.

M. B. RUDE MADE AN EXCAVATION WITH THE BACKHOE AT THE CENTERLINE OF THE EAST-WEST ROAD AND FENCE LINES NORTH AND SOUTH. THE EXCAVATION WAS 12 FEET BY 12 FEET BY 2.5 FEET DEEP, ONE FOOT INTO THE NATURAL GROUND. NO EVIDENCE WAS FOUND IN THE EXCAVATION.

M. B. RUDE SET THIS CORNER BY SINGLE PROPORTIONAL MEASUREMENT BETWEEN THE SOUTHEAST AND SOUTHWEST CORNERS. THIS LOCATION FITS AN OLD FENCE LINE NORTH AND A TREE LINE SOUTH.

M. B. RUDE SET A 2 3/4" BY 19" CAST IRON MONUMENT.

IN JULY 2005 WE LOCATED THIS CORNER CHECKED TIE INFORMATION AND TOOK ADDITIONAL TIES IF AVAILABLE AND ESTABLISHED KANABEC COUNTY COORDINATES ON THIS POSITION.