

CERTIFICATE OF LOCATION OF GOVERNMENT CORNER

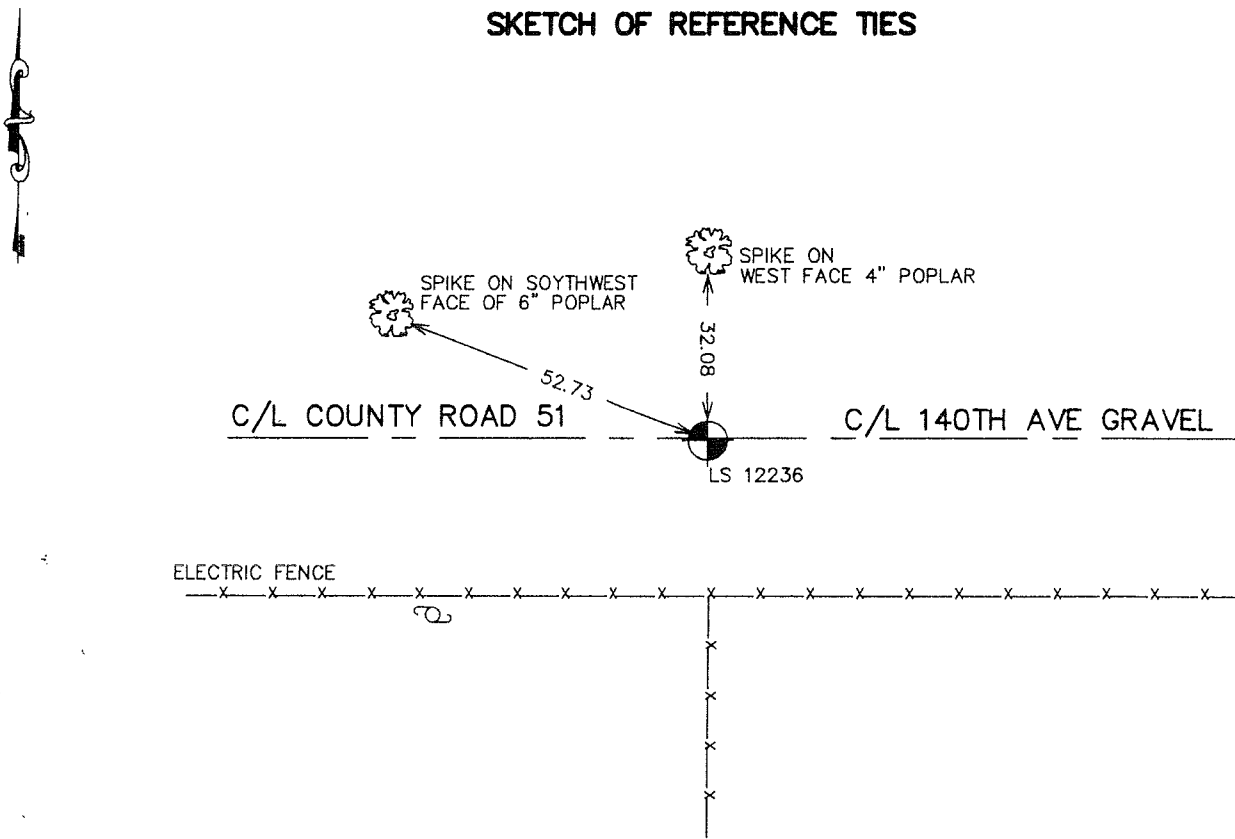
NORTH QUARTER Corner of Section 17, Township 38, Range 25, 4TH P.M.

STATE OF MINNESOTA, County of KANABEC

At the corner location shown on the sketch:
#7 REBAR WITH CAP SET
AND ESTABLISHED G.P.S. COORDINATES ON ITS LOCATION.

Kanabec County U.S. Survey Feet Coordinates
NAD 1983, HARN 1996 Adjustment
Obtained by RTK GPS Observation
Northing= 123236.16
Easting= 351173.67
Note: NAD 1983, HARN 1996 Adjustment
coordinates are NOT compatible with
NAD 1983 coordinates
Note: 1 Meter=3937/1200 U.S. Survey Feet

SKETCH OF REFERENCE TIES



Statement of evidence relative to this corner location is on back of page.

I hereby certify that this document and the data contained herein was prepared by me or under my direct supervision.

Ernest J. Rud
Signature

9-28-2006
Date

Registration No. None No 9808

Land Surveyor, Professional Engineer

County Surveyor, County Engineer

OFFICE OF THE COUNTY RECORDER

County of _____

I hereby certify that this document was filed in the County Recorder's office at _____ M. on the

_____ day of _____ A.D., 20__

County Recorder _____

BY _____ Deputy

DOCUMENT NO. _____

NORTH QUARTER CORNER SECTION 17, T38, R25

STATEMENT OF EVIDENCE

THE ORIGINAL CORNER WAS SET BY DEPUTY SURVEYOR DANIEL HIGBEE IN DECEMBER 1851. NO VISIBLE SIGNS OR EVIDENCE FOR THE ORIGINAL CORNER OR BEARING TREES REMAIN.

THERE IS A ROAD OPENING ON FILE AT KANABEC COUNTY AUDITOR OFFICE DATED JULY 23, 1897. NO OTHER RECORDS OF SUBSEQUENT SURVEYS COULD BE FOUND.

IN AUGUST 2006 E.G. RUD AND SONS RAN A SURVEY AROUND SECTIONS 16, 17 AND 18 TO LOCATE EXISTING MONUMENTS, TIE IN LINES OF OCCUPATION AND DETERMINE SEARCH AREAS. THIS CORNER FALLS ON THE CENTERLINE OF AN EAST-WEST GRAVEL ROAD AND A FENCE LINE RUNNING SOUTH.

ON SEPTEMBER 5, 2006 AN EXCAVATION WAS MADE AT THIS LOCATION. IT WAS 16 FEET EAST-WEST 8 FEET NORTH-SOUTH AND 1 FOOT INTO NATURAL GROUND. JUST BELOW THE SURFACE A 1/2" IRON PIPE WITH PLASTIC CAP #12236 WAS FOUND. THE PIPE WAS TIED OUT AND EXCAVATION CONTINUED. A SANDSTONE WITH A FLAT TOP WAS FOUND AT NATURAL GRADE BUT NO X WAS CHISELED ON IT. THIS SANDSTONE AND THE 1/2 " IRON PIPE WERE AT APPROXIMATELY THE SAME LOCATION. NO OTHER EVIDENCE WAS FOUND. THE 1/2" IRON PIPE FIT WITHIN 2 FEET OF LINE AND SPLIT SO THE LOST METHOD WAS USED AND A MONUMENT SET EQUIDISTANT AND ON LINE BETWEEN NORTHEAST AND NORTHWEST CORNERS OF SECTION 17.

A #7 REBAR WAS SET WITH AN ALUMINUM CAP, TIES TAKEN AND KANABEC COUNTY COORDINATES ESTABLISHED USING G.P.S. EQUIPMENT.