

CERTIFICATE OF LOCATION OF GOVERNMENT CORNER

SOUTHEAST Corner of Section 7, Township 38, Range 25, 4TH P.M.

STATE OF MINNESOTA, County of KANABEC

At the corner location shown on the sketch:
In July 2005 found a 2 3/4" X 19" cast iron monument.

Kanabec County U.S. Survey Feet Coordinates
NAD 1983, HARN 1996 Adjustment
Obtained by RTK GPS Observation

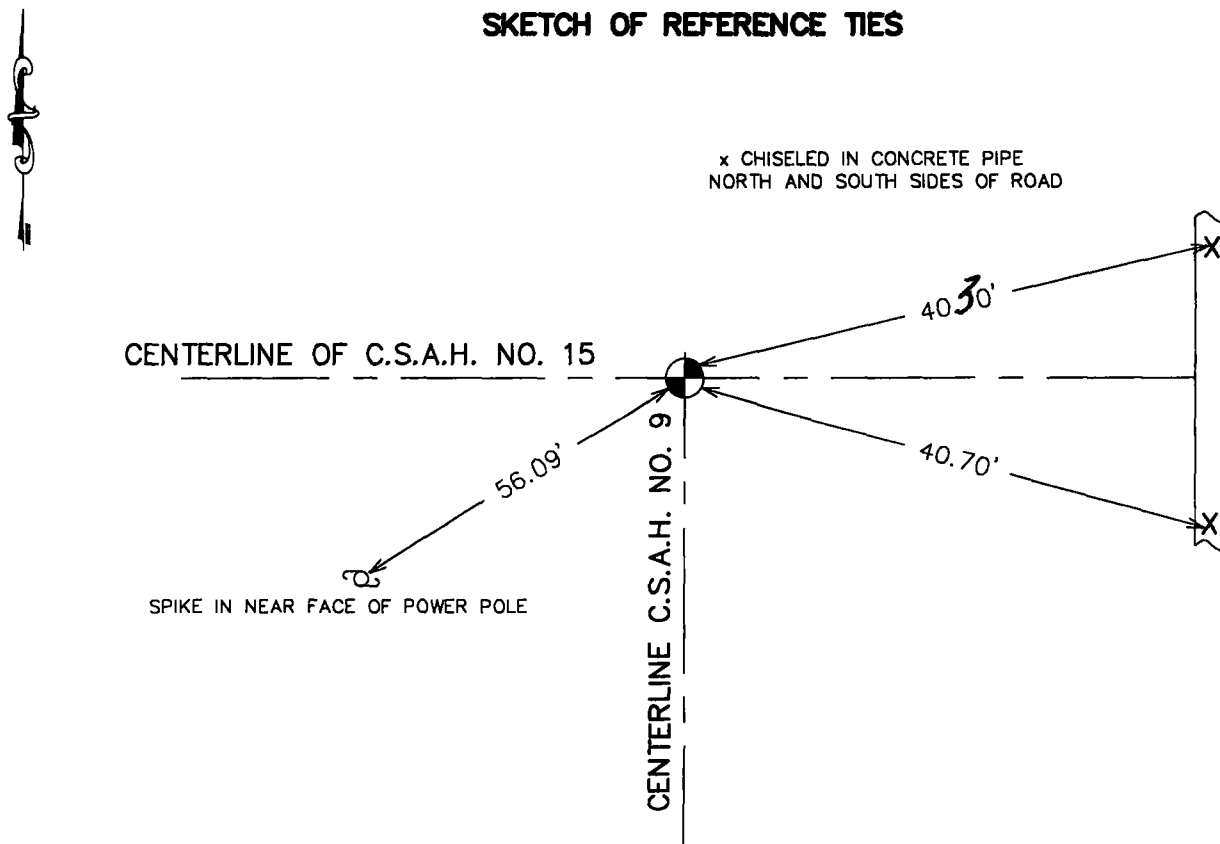
Northing= 123364.29

Easting= 348489.00

Note: NAD 1983, HARN 1996 Adjustment
coordinates are NOT compatible with
NAD 1983 coordinates

Note: 1 Meter=3937/1200 U.S. Survey Feet

SKETCH OF REFERENCE TIES



Statement of evidence relative to this corner location is on back of page.

I hereby certify that this document and the data contained herein was prepared by me or under my direct supervision.

Ernest Rud
Signature

9-19-05
Date

Registration No. 9800

Land Surveyor, Professional Engineer

County Surveyor, County Engineer

OFFICE OF THE COUNTY RECORDER

County of Kanabec

I hereby certify that this document was filed in the County Recorder's office at 8:00 A.M. on the

21st day of Sept A.D., 2005

County Recorder Rhonda A Olson

BY _____ Deputy

DOCUMENT NO. _____

STATEMENT OF EVIDENCE FROM TIE SHEET 557

ALL OF THE ORIGINAL BEARING TREES ARE GONE.

THERE IS NO RESURVEY DATA ON FILE FOR THIS CORNER.

M.B.RUDE MADE AN EXCAVATION WITH THE BACKHOE AT THE INTERSECTION OF ROADS EAST-WEST AND SOUTH.

AT 2 FEET BELOW THE SURFACE, M. B. RUDE FOUND A 2" IRON PIPE WHICH FITS THE LINES OF OCCUPATION AND WAS ACCEPTED AS THE BEST AVAILABLE EVIDENCE OF THE ORIGINAL CORNER LOCATION.

M. B. RUDE SET A 2 ¾" BY 19" IRON MONUMENT ON TOP OF THE 2" IRON PIPE.

IN JULY 2005 WE LOCATED THIS CORNER CHECKED TIE INFORMATION AND TOOK ADDITIONAL TIES IF AVAILABLE AND ESTABLISHED KANABEC COUNTY COORDINATES ON THIS POSITION.