

CERTIFICATE OF LOCATION OF GOVERNMENT CORNER

EAST QUARTER Corner of Section 18, Township 38, Range 25, 4TH P.M.

STATE OF MINNESOTA, County of KANABEC

At the corner location shown on the sketch:
#7 REBAR WITH CAP SET
AND ESTABLISHED G.P.S. COORDINATES ON ITS LOCATION.

Kanabec County U.S. Survey Feet Coordinates
NAD 1983, HARN 1996 Adjustment
Obtained by RTK GPS Observation

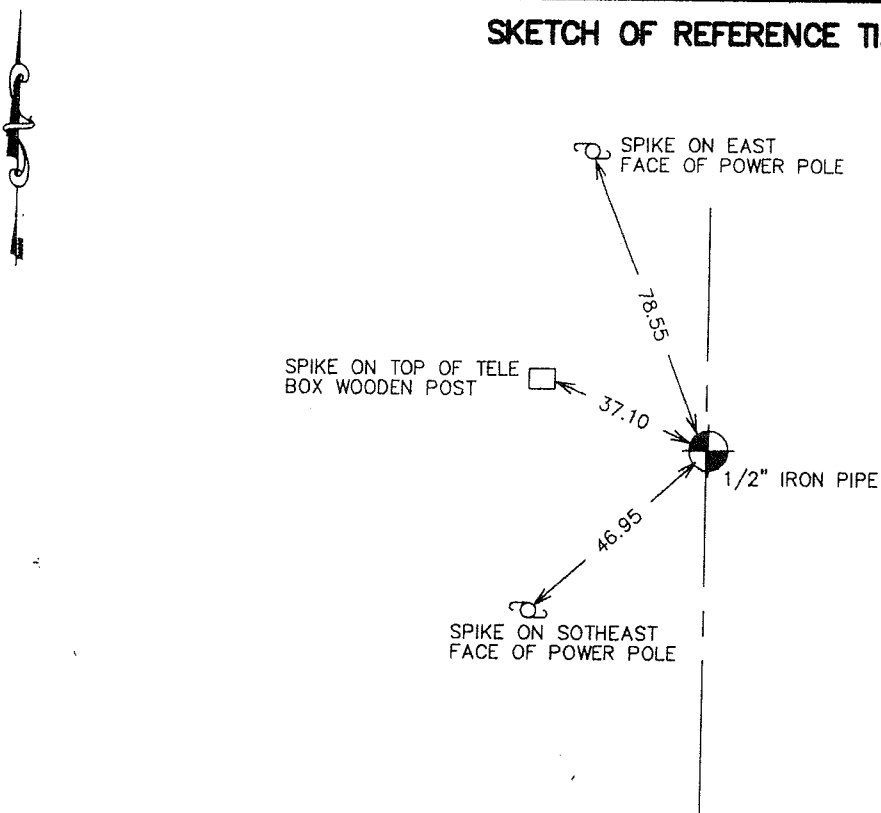
Northing= 120699.68

Easting= 348509.80

Note: NAD 1983, HARN 1996 Adjustment
coordinates are NOT compatible with
NAD 1983 coordinates

Note: 1 Meter=3937/1200 U.S. Survey Feet

SKETCH OF REFERENCE TIES



Statement of evidence relative to this corner location is on back of page.

I hereby certify that this document and the data contained herein was prepared by me or under my direct supervision.

Ernest Rud 9-28-2006
Signature Date

Registration No. Minn No 9808

Land Surveyor, Professional Engineer

County Surveyor, County Engineer

OFFICE OF THE COUNTY RECORDER

County of _____

I hereby certify that this document was filed in the County Recorder's office at _____ M. on the

_____ day of _____ A.D., 20____

County Recorder _____

BY _____ Deputy

DOCUMENT NO. _____

EAST QUARTER CORNER SECTION 18, T38, R25

STATEMENT OF EVIDENCE

EAST QUARTER CORNER OF SECTION 18, TOWNSHIP 38 NORTH, RANGE 25 WEST,
SOUTH FORK TOWNSHIP , 4TH PRINCIPAL MERIDIAN, KANABEC COUNTY, MINNESOTA.

1848 - ORIGINAL U.S. GENERAL LAND OFFICE SURVEY SET A WOOD POST AT THIS
LOCATION AND BEARING TREES WERE RECORDED. THE WOOD POST WAS PLACED AT
40 CHAINS FROM THE SOUTHWEST CORNER OF SECTION 17.

10" PINE N36°E 30 LINKS
14" BURR OAK S35°W 31 LINKS

2005 - ON APRIL 15, 2005, BOGART, PEDERSON, AND ASSOCIATES (BPA), A
PRIVATE SURVEYING FIRM IN WAITE PARK, MN SEARCHED FOR THE CORNER AND
FOUND NO EVIDENCE OF THE CORNER OR THE ORIGINAL BEARING TREES. A
STANDARD CAST IRON MONUMENT WAS FOUND AT THE NORTHWEST CORNER OF
SECTION 17. A 2 INCH OPEN IRON PIPE WAS ALSO LOCATED AT THE SOUTHWEST
CORNER OF SECTION 17. IN ADDITION, A TREE LINE WITH FENCE REMNANTS WAS
LOCATED AT THE LOCATION OF THE CORNER. THIS POSITION WAS ACCEPTED AS THE
POSITION FOR THE CORNER. A DISTANCE OF 2664.59 FEET WAS MEASURED TO THE
NORTHWEST CORNER AND 2674.35 FEET WAS MEASURED TO THE IRON PIPE LOCATED
AT THE SOUTHWEST CORNER. REFERENCE TIES WERE RECORDED AT THIS TIME.

2006 - E.G. RUD FOUND THIS 1/2" IRON PIPE IN AUGUST 2006. ON SEPTEMBER 5,
2006 AN EXCAVATION WAS MADE AT THIS CORNER WITH A BACKHOE. NO OTHER
EVIDENCE COULD BE FOUND SO THE 1/2" I.P. WAS ACCEPTED AS THE LOCATION FOR
THIS CORNER.

A #7 REBAR WITH AN ALUMINUM CAP WAS SET AND KANABEC COUNTY COORDINATES
ESTABLISHED USING G.P.S. EQUIPMENT.