

CERTIFICATE OF LOCATION OF GOVERNMENT CORNER

NORTH QUARTER Corner of Section 19, Township 38, Range 25, 4TH P.M.

STATE OF MINNESOTA, County of KANABEC

At the corner location shown on the sketch:
SET #7 REBAR WITH ALUMINUM CAP
AND ESTABLISHED G.P.S. COORDINATES ON ITS LOCATION.

Kanabec County U.S. Survey Feet Coordinates
NAD 1983, HARN 1996 Adjustment
Obtained by RTK GPS Observation

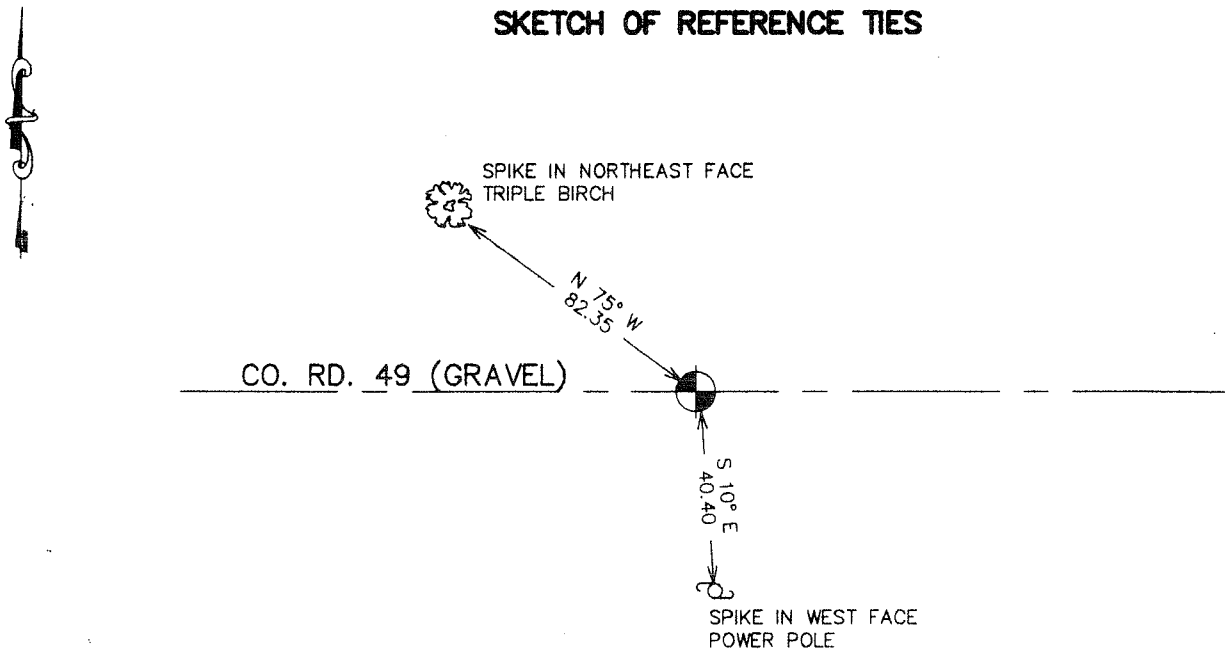
Northing= 118138.11

Easting= 34585006

Note: NAD 1983, HARN 1996 Adjustment
coordinates are NOT compatible with
NAD 1983 coordinates

Note: 1 Meter=3937/1200 U.S. Survey Feet

SKETCH OF REFERENCE TIES



Statement of evidence relative to this corner location is on back of page.

I hereby certify that this document and the data contained herein was prepared by me or under my direct supervision.

Ernest J. Rud 11-1-2006
Signature Date

Registration No. Minn No 9808

Land Surveyor, Professional Engineer

County Surveyor, County Engineer

OFFICE OF THE COUNTY RECORDER

County of _____

I hereby certify that this document was filed in the County Recorder's office at _____ M. on the

_____ day of _____ A.D., 20____

County Recorder _____

BY _____ Deputy

DOCUMENT NO. _____

NORTH QUARTER CORNER SECTION 19, T38, R25

STATEMENT OF EVIDENCE

THE ORIGINAL CORNER WAS SET BY DEPUTY SURVEYOR DANIEL HIGBEE IN DECEMBER 6, 1851. NO VISIBLE EVIDENCE FOR THE CORNER OR BEARING TREES REMAIN. THERE IS A TOWN ROAD OPENING DATED JULY 23, 1897 ON FILE AT KANABEC COUNTY AUDITORS OFFICE DATED NOVEMBER 16, 1896. VICKERY RECORDED CHAINAGE OF 81.14 CHAINS ALONG SOUTH LINE SECTION 18 WHICH IS SAME AS GOVERNMENT CHAINAGE. NO OTHER RECORDS OF SUBSEQUENT SURVEYS COULD BE FOUND.

IN AUGUST 2006 E.G. RUD RAN A SURVEY AROUND SECTION 17, 18, 19 AND 20 TO LOCATE EXISTING MONUMENTATION, TIE IN LINES OF OCCUPATION AND DETERMINE SEARCH AREAS. THIS CORNER FALLS AT THE CENTERLINE OF AN EAST-WEST GRAVEL ROAD, A FENCE LINE RUNNING SOUTH AND A TREE LINE RUNNING NORTH.

ON AUGUST 29, 2006 AN EXCAVATION WAS MADE AT THIS LOCATION 18' EAST-WEST AND 8' NORTH SOUTH. AT THE SURFACE A 1/2" BY 14" IRON PIPE WAS FOUND. NO IDENTIFICATION SO ORIGIN IS UNKNOWN. THE EXCAVATION WAS 4' DEEP AND 9" INTO NATURAL GROUND. SEVERAL STONES WERE FOUND BUT NONE OF THEM HAD AN X CHISELED ON THEM.

THE LOCATION IF THE 1/2" IRON PIPE WAS ACCEPTED AS THE BEST EVIDENCE OF THE PERPETUATED CORNER. THIS POSITION IS WITHIN 3' OF A PRORATED GOVERNMENT CHAINAGE AND AGREES WITH THE LINES OF OCCUPATION.

A # 7 REBAR WITH AN ALUMINUM CAP WAS SET, TIES TAKEN AND KANABEC COUNTY COORDINATES ESTABLISHED USING G.P.S. EQUIPMENT.