

CERTIFICATE OF LOCATION OF GOVERNMENT CORNER

NORTH 1/4 Corner of Section 20, Township 38, Range 25, 4TH P.M.

STATE OF MINNESOTA, County of KANABEC

SET #7 REBAR WITH ALUMINUM CAP

Kanabec County U.S. Survey Feet Coordinates
 NAD 1983, HARN 1996 Adjustment
 Obtained by RTK GPS Observation

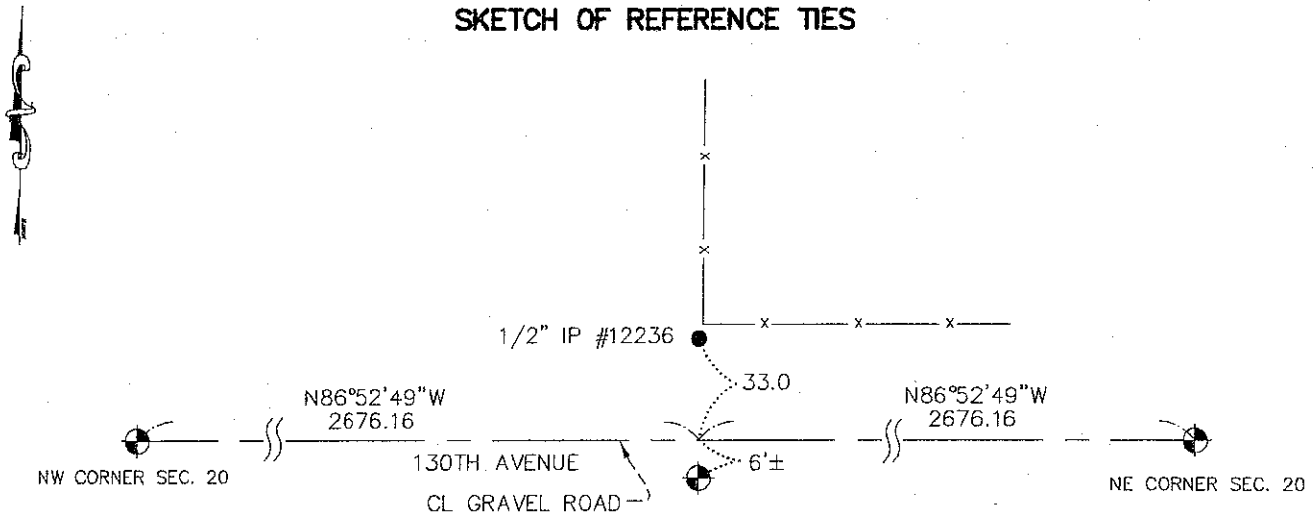
Northing= 117879.51

Easting= 351202.74

Note: NAD 1983, HARN 1996 Adjustment
 coordinates are NOT compatible with
 NAD 1983 coordinates.

Note: 1 Meter=3937/1200 U.S. Survey Feet

SKETCH OF REFERENCE TIES



Statement of evidence relative to this corner location is on back of page.

I hereby certify that this document and the data contained herein was prepared by me or under my direct supervision.

Ernest [Signature]
 Signature

3-23-2009
 Date

Registration No. 9808

- Land Surveyor, Professional Engineer
 County Surveyor, County Engineer

OFFICE OF THE COUNTY RECORDER

County of _____

I hereby certify that this document was filed in the County Recorder's office at _____ M. on the

_____ day of _____ A.D., 20__

County Recorder _____

BY _____ Deputy

DOCUMENT NO. _____

N 1/4 CORNER SECTION 20, TOWNSHIP 38, RANGE 25

STATEMENT OF EVIDENCE

THE ORIGINAL CORNER WAS SET BY DEPUTY SURVEYOR DANIEL HIGBEE IN DEC. OF 1851, AND TWO BEARING TREES WERE ESTABLISHED. NO VISIBLE EVIDENCE FOR THE ORIGINAL CORNER OR BEARING TREES REMAIN.

NO RECORDS COULD BE FOUND AT KANABEC COUNTY OFFICE FOR ANY SUBSEQUENT SURVEYS USING THIS CORNER.

IN AUGUST 2006, E.G. RUD AND SONS RAN A SURVEY AROUND SECTIONS 16, 17, 18 AND 19 TO LOCATE EXISTING MONUMENTATION, LINE OF OCCUPATION AND TO DETERMINE SEARCH AREAS. THIS CORNER FALLS ON THE CENTERLINE OF AN EAST-WEST GRAVEL ROAD AND ON THE SOUTHERLY EXTENSION OF A FENCE LINE RUNNING NORTH. A 1/2" IRON PIPE WAS LOCATED APPROXIMATELY 100 FEET EAST OF THIS LOCATION.

ON AUGUST 20, 2006 AN EXCAVATION WITH A BACKHOE WAS MADE AT THIS LOCATION OF THE 1/2" IRON PIPE AND AT A LOCATION EQUIDISTANT FROM THE NW AND NE CORNERS OF SECTION 20. THESE EXCAVATIONS WERE 1 FOOT INTO NATURAL GROUND AND NO EVIDENCE FOR THE CORNER COULD BE FOUND IN EITHER EXCAVATION. THEREFORE THIS CORNER WAS SET BY LOST METHODS ON LINE AND EQUAL DISTANCE TO THE NE AND NW CORNERS OF SECTION 20.

A #7 REBAR WITH AN ALUMINUM CAP WAS SET AND KANABEC COUNTY COORDINATES WERE ESTABLISHED USING G.P.S. EQUIPMENT.