

# CERTIFICATE OF LOCATION OF GOVERNMENT CORNER

EAST QUARTER Corner of Section 19, Township 38, Range 25, 4TH P.M.

STATE OF MINNESOTA, County of KANABEC

At the corner location shown on the sketch:  
SET #7 REBAR  
AND ESTABLISHED G.P.S. COORDINATES ON ITS LOCATION.

Kanabec County U.S. Survey Feet Coordinates  
NAD 1983, HARN 1996 Adjustment  
Obtained by RTK GPS Observation

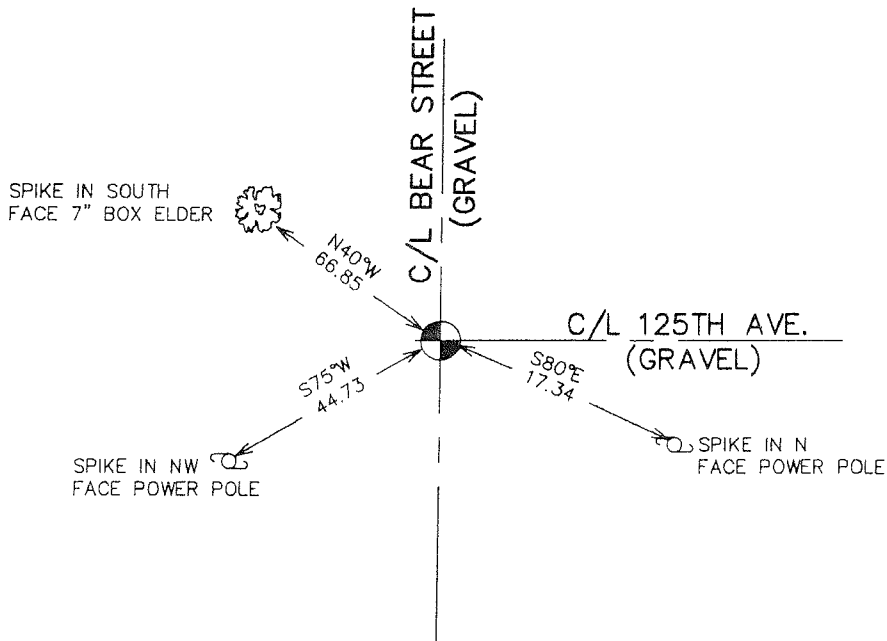
Northing= 115351.54

Easting= 348499.38

Note: NAD 1983, HARN 1996 Adjustment  
coordinates are NOT compatible with  
NAD 1983 coordinates

Note: 1 Meter=3937/1200 U.S. Survey Feet

## SKETCH OF REFERENCE TIES



Statement of evidence relative to this corner location is on back of page.

I hereby certify that this document and the data contained herein was prepared by me or under my direct supervision.

*Ernest Red*  
Signature

10-12-2006  
Date

Registration No. Minn No. 9808

- Land Surveyor,  Professional Engineer
- County Surveyor,  County Engineer

## OFFICE OF THE COUNTY RECORDER

County of \_\_\_\_\_

I hereby certify that this document was filed in the County Recorder's office at \_\_\_\_\_ M. on the

\_\_\_\_\_ day of \_\_\_\_\_ A.D., 20\_\_

County Recorder \_\_\_\_\_

BY \_\_\_\_\_ Deputy

DOCUMENT NO. \_\_\_\_\_

## STATEMENT OF EVIDENCE

THE ORIGINAL CORNER WAS SET BY U.S. DEPUTY SURVEYOR DANIEL HIGBEE ON DECEMBER 1, 1851. THE POST WAS SET AND A BIRCH AND PINE TREE WERE USED AS BEARING TREES. NO VISIBLE EVIDENCE FOR THE CORNER OR BEARING TREES REMAIN.

THERE IS A ROAD OPENING ALONG THE EAST LINE OF SECTION 19 DATED MAY 3, 1901 AND A ROAD OPENING DATED OCTOBER 1897 RUNNING FROM THIS CORNER TO THE EAST ALONG THE EAST-WEST CENTERLINE OF SECTION 20.

NO OTHER RECORDS OF SUBSEQUENT SURVEYS COULD BE FOUND, ON AUGUST 2006 E.G. RUD AND SONS RAN A SURVEY AROUND SECTIONS 16-19 TO LOCATE EXISTING MONUMENTATION, TIE IN LINES OF OCCUPATION AND DETERMINE SEARCH AREAS. THIS CORNER FALLS AT THE INTERSECTION OF A NORTH-SOUTH GRAVEL ROAD WITH A GRAVEL ROAD RUNNING EAST.

ON SEPTEMBER 5 AN 8' X 20' EXCAVATION 1 FOOT INTO NATURAL GROUND WAS DUG AT THIS LOCATION. JUST BELOW THE SURFACE A 1/2" IRON PIPE 14" LONG WAS FOUND. THIS WAS TIED OUT AND EXCAVATION. A FLAT ROCK WAS FOUND AT ORIGINAL GRADE AT APPROXIMATELY THE SAME LOCATION OF IRON PIPE.

NO OTHER EVIDENCE WAS FOUND. BEING THE 1/2" IRON PIPE WASN'T IDENTIFIED SO SOURCE WAS UNKNOWN WE SET THIS CORNER ON LINE AND EQUIDISTANT BETWEEN THE NORTHEAST AND SOUTHEAST CORNER OF SECTION 19. THIS FELL WITHIN A HALF OF A FOOT FROM THE IRON PIPE AND A #7 REBAR 24" LONG WITH AN ALUMINUM CAP WAS SET., TIES TAKEN AND KANABEC COUNTY COORDINATES ESTABLISHED.