

CERTIFICATE OF LOCATION OF GOVERNMENT CORNER

NORTH QUARTER Corner of Section 30, Township 38, Range 25, 4TH P.M.

STATE OF MINNESOTA, County of KANABEC

At the corner location shown on the sketch:
SET A #7 REBAR WITH AN ALUMINUM CAP.

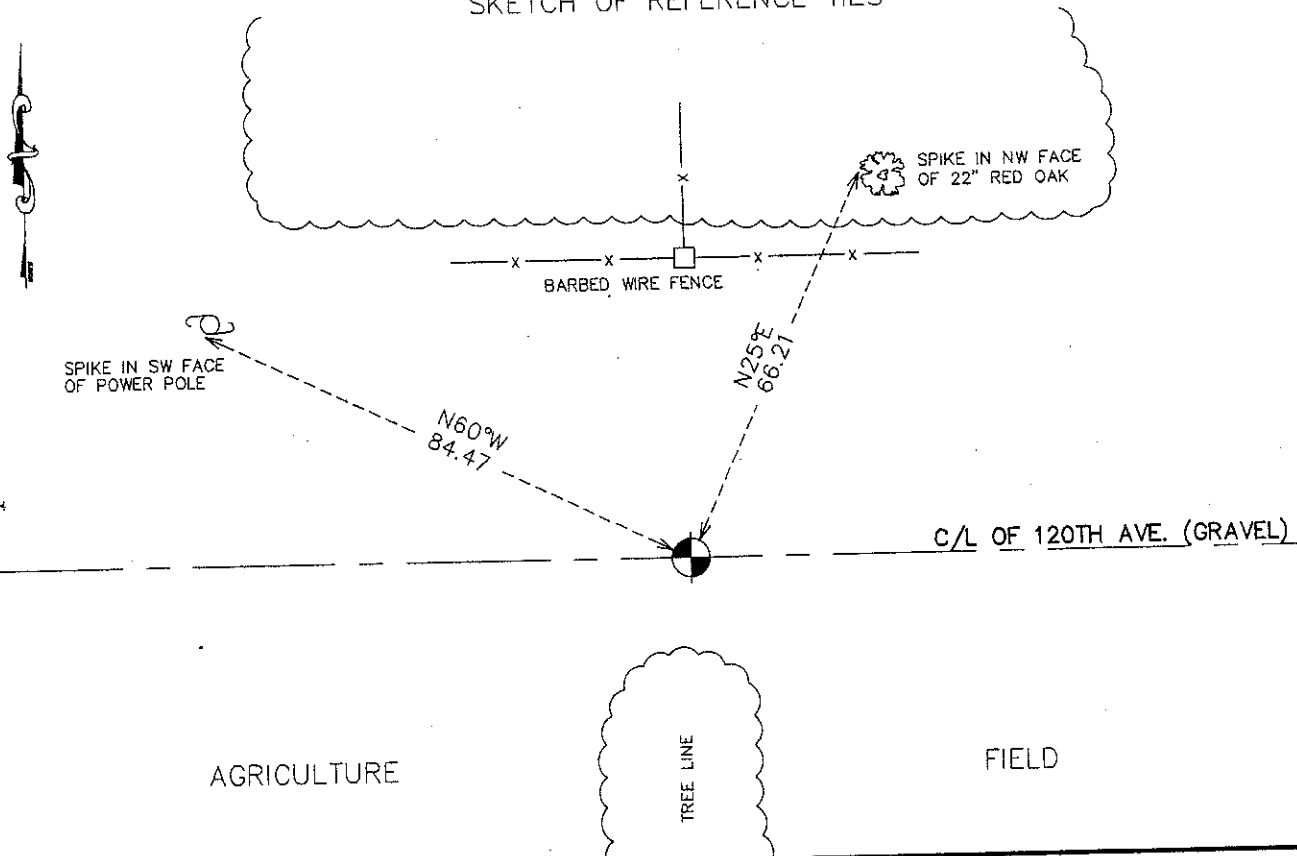
Kanabec County U.S. Survey Feet Coordinates
NAD 1983, HARN 1996 Adjustment
Obtained by RTK GPS Observation

Northing= 112782.57

Easting= 345839.28

Note: NAD 1983, HARN 1996 Adjustment
coordinates are NOT compatible with
NAD 1983 coordinates
Note: 1 Meter=3937/1200 U.S. Survey Feet

SKETCH OF REFERENCE TIES



Statement of evidence relative to this corner location is on back of page.

I hereby certify that this document and the data contained herein was prepared by me or under my direct supervision.

Ernest J. Reed
Signature

12-21-2010
Date

Registration No. 9808

Land Surveyor, Professional Engineer

County Surveyor, County Engineer

OFFICE OF THE COUNTY RECORDER

County of _____

I hereby certify that this document was filed in the County Recorder's office at _____ M. on the _____ day of _____ A.D., 20____

County Recorder _____

BY _____ Deputy

DOCUMENT NO. _____

N1/4 CORNER, SEC. 30, T38, R25

STATEMENT OF EVIDENCE

THE ORIGINAL CORNER POST WAS SET BY DEPUTY SURVEYOR DANIEL HIGBEE ON NOV. 29, 1851 AND 2 BEARING TREES ESTABLISHED AS FOLLOWS:

12" WHITE BITCH BEARING N42°W @ 15 LINKS

12" WHITE PINE BEARING S59°E @ 41 LINKS

NO VISIBLE EVIDENCE COULD BE FOUND FOR THE POST OR BEARING TREES..

THIS CORNER FALLS ON THE CENTERLINE OF A GRAVEL ROAD RUNNING EAST-WEST AT THE INTERSECTION OF A FENCE RUNNING NORTH AND A TREE ROW RUNNING SOUTH.

THERE IS A ROAD OPENING ON FILE DATED JUNE 1914 BUT NO SURVEY WAS DONE.

NO SUBSEQUENT SURVEYS COULD BE FOUND AT THE KANABEC COUNTY OFFICES.

ON AUG. 8, 2010 AN EXCAVATION WITH THE COUNTY BACKHOE WAS MADE AT THIS LOCATION. AT 4" DOWN A 1/2" IRON PIPE WAS FOUND. THIS WAS TIED OUT AND THE EXCAVATION CONTINUED 9" INTO NATURAL GROUND. NO OTHER EVIDENCE COULD BE FOUND. THEREFORE THE 1/2" IRON PIPE WAS ACCEPTED AS THE BEST EVIDENCE FOR THIS CORNER AS IT FIT THE LINES OF OCCUPATION WELL. A #7 REBAR WITH AN ALUMINUM CAP WAS SET, TIES WERE TAKEN AND KANABEC COUNTY COORDINATES WERE ESTABLISHED ON THIS POSITION.