

CERTIFICATE OF LOCATION OF GOVERNMENT CORNER

NORTHEAST Corner of Section 30 , Township 38 , Range 25 , 4TH P.M.

STATE OF MINNESOTA, County of KANABEC

At the corner location shown on the sketch:
On 04/ /2004 Found a Kanabec County Monument.

Kanabec County U.S. Survey Feet Coordinates
NAD 1983, HARN 1996 Adjustment
Obtained by RTK GPS Observation

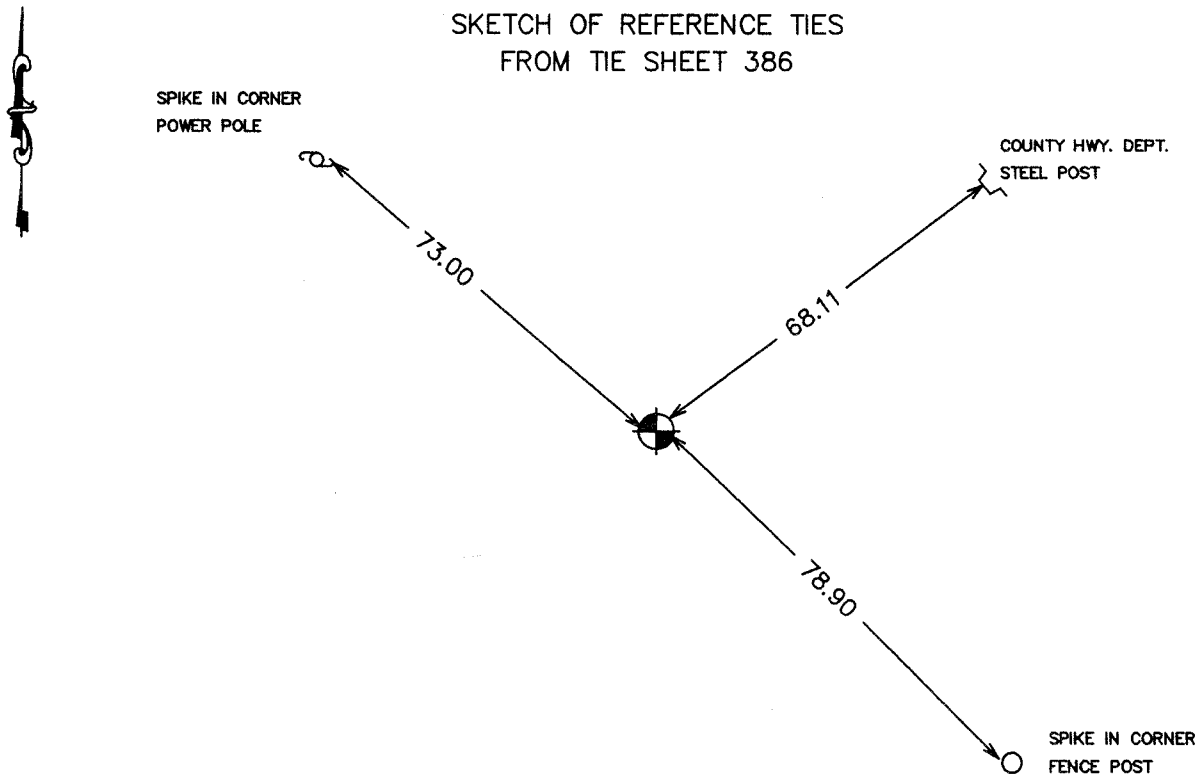
Northing= 112677.913

Easting= 348468.224

Note: NAD 1983, HARN 1996 Adjustment
coordinates are NOT compatible with
NAD 1983 coordinates

Note: 1 Meter=3937/1200 U.S. Survey Feet

SKETCH OF REFERENCE TIES
FROM TIE SHEET 386



Statement of evidence relative to this corner location is on back of page.

I hereby certify that this document and the data contained herein was prepared by me or under my direct supervision.

Ernest Hud
Signature

6-1-2004
Date

Registration No. 9808

Land Surveyor, [] Professional Engineer

[] County Surveyor, [] County Engineer

OFFICE OF THE COUNTY RECORDER

County of _____

I hereby certify that this document was filed in the County Recorder's office at _____ M. on the

_____ day of _____ A.D., 20__

County Recorder _____

BY _____ Deputy

DOCUMENT NO. _____

NE cor Sec 30-38-25

STATEMENT OF EVIDENCE
(FROM M.B. Rude, TIE SHEET 386)

Set monument from survey of county road #4, by M.B. Rude. He stated that the location of the County's Pin was good for the corner.

(2004)

In April 2004, E.G. Rud ran a survey around Sections 26, 27, 28, 29, 34 and 35. We found the monument set by M.B. Rude. We established Kanabec County Coordinates on this location using G.P.S. equipment.