

CERTIFICATE OF LOCATION OF GOVERNMENT CORNER

WEST QUARTER Corner of Section 29, Township 38, Range 25, 4TH P.M.

STATE OF MINNESOTA, County of KANABEC

At the corner location shown on the sketch:
FOUND A KANABEC COUNTY CAST ALUMINUM MONUMENT WITH
MAGNETS

Kanabec County U.S. Survey Feet Coordinates
NAD 1983, HARN 1996 Adjustment
Obtained by RTK GPS Observation

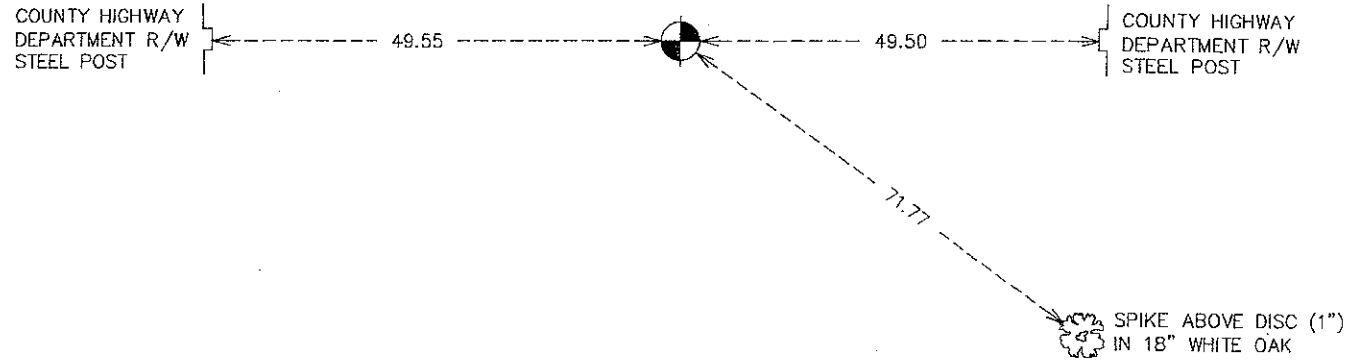
Northing= 110012.27

Easting= 348476.55

Note: NAD 1983, HARN 1996 Adjustment
coordinates are NOT compatible with
NAD 1983 coordinates

Note: 1 Meter=3937/1200 U.S. Survey Feet

SKETCH OF REFERENCE TIES



Statement of evidence relative to this corner location is on back of page.

I hereby certify that this document and the data contained herein was prepared by me or under my direct supervision.

Ernest J. Rud 9-30-2008
Signature Date

Registration No. Minn No. 9808

Land Surveyor, Professional Engineer

County Surveyor, County Engineer

OFFICE OF THE COUNTY RECORDER

County of _____

I hereby certify that this document was filed in the County Recorder's office at _____ M. on the

_____ day of _____ A.D., 20__

County Recorder _____

BY _____ Deputy

DOCUMENT NO. _____

WEST QUARTER CORNER SECTION 29, TOWNSHIP 38, RANGE 25

STATEMENT OF EVIDENCE

IN 1975 M.B. RUDE SET A CAST ALUMINUM MONUMENT WITH MAGNETS FROM RUDES SURVEY, SURVEY WAS MADE OF COUNTY ROAD #4, AND IT FIT THE LOCATION OF THE MILLE LACS COUNTY'S HIGHWAY DEPARTMENT IRON PIN.

IN MARCH 2008 E.G. RUD & SONS, INC. FOUND THIS MONUMENT AND KANABEC COUNTY COORDINATES WERE STABLISHED ON THIS POSITION USING GLOBAL POSITIONING SYSTEM (G.P.S.) EQUIPMENT.