

3825116

CERTIFICATE OF LOCATION OF GOVERNMENT CORNER

NORTH QUARTER Corner of Section 31, Township 38, Range 25, 4TH P.M.
 STATE OF MINNESOTA, County of KANABEC

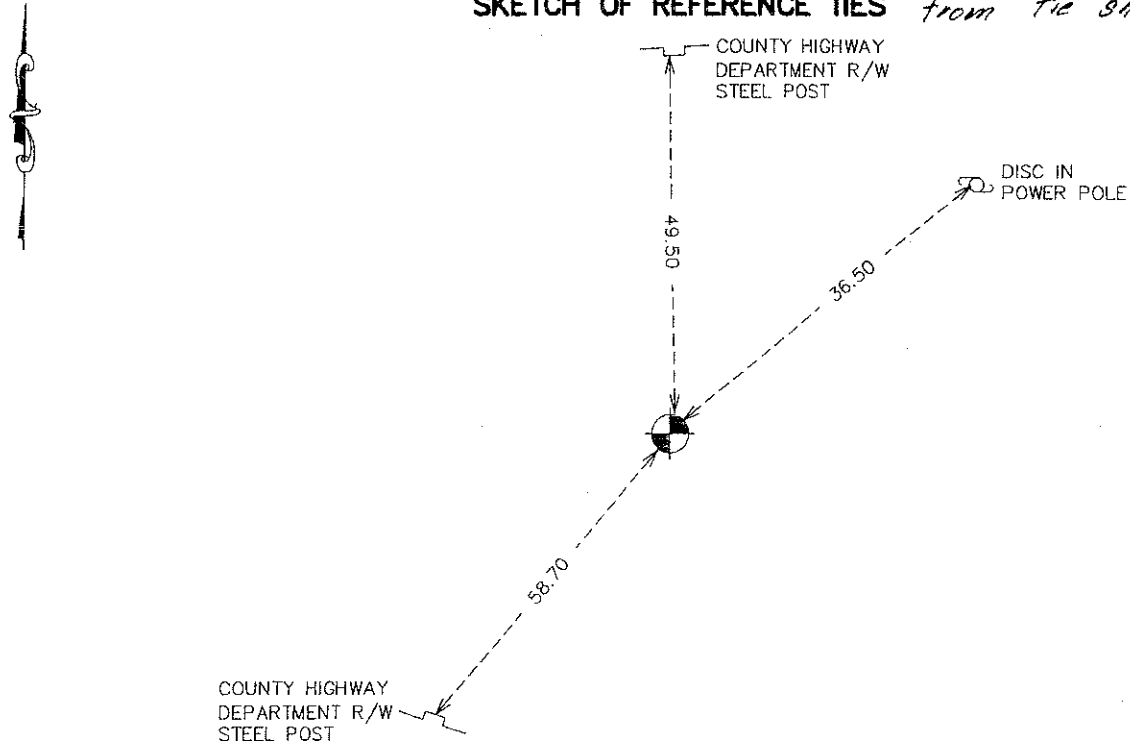
At the corner location shown on the sketch:
 FOUND A KANABEC COUNTY CAST ALUMINUM MONUMENT WITH MAGNETS

Kanabec County U.S. Survey Feet Coordinates
 NAD 1983, HARN 1996 Adjustment
 Obtained by RTK GPS Observation

Northing= 107413.85
 Easting= 345851.57

Note: NAD 1983, HARN 1996 Adjustment
 coordinates are NOT compatible with
 NAD 1983 coordinates
 Note: 1 Meter=3937/1200 U.S. Survey Feet

SKETCH OF REFERENCE TIES *from tie sheet 385*



Statement of evidence relative to this corner location is on back of page.

I hereby certify that this document and the data contained herein was prepared by me or under my direct supervision.

Ernest J. Rud 9-30-2008
 Signature Date

Registration No. Miss No. 9808

- Land Surveyor, Professional Engineer
 County Surveyor, County Engineer

OFFICE OF THE COUNTY RECORDER

County of _____

I hereby certify that this document was filed in the County Recorder's office at _____ M. on the _____ day of _____ A.D., 20 _____

County Recorder _____
 BY _____ Deputy

DOCUMENT NO. _____

STATEMENT OF EVIDENCE

NARRATIVE FROM TIE SHEET #385

MONUMENT WAS SET FROM SURVEY MADE BY M.B. RUDE, SURVEY WAS MADE OF COUNTY ROAD #4. RUDE STATED THAT THE LOCATION OF THE MILLE LACS COUNTY'S HIGHWAY DEPARTMENT IRON PIN WAS GOOD FOR THE SECTION CORNER. RUDE THEN SET A KANABEC COUNTY CAST ALUMINUM MONUMENT WITH MAGNETS IN PLACE OF THE COUNTY'S PIN.

IN MARCH 2008 E.G. RUD & SONS, INC. FOUND THIS MONUMENT AND KANABEC COUNTY COORDINATES WERE ESTABLISHED ON THIS POSITION USING GLOBAL POSITIONING SYSTEM (G.P.S.) EQUIPMENT.