

CERTIFICATE OF LOCATION OF GOVERNMENT CORNER

EAST QUARTER Corner of Section 31, Township 38, Range 25, 4TH P.M.
STATE OF MINNESOTA, County of KANABEC

At the corner location shown on the sketch:
SET REBAR WITH ALUMINUM CAP

Kanabec County U.S. Survey Feet Coordinates
NAD 1983, HARN 1996 Adjustment
Obtained by RTK GPS Observation

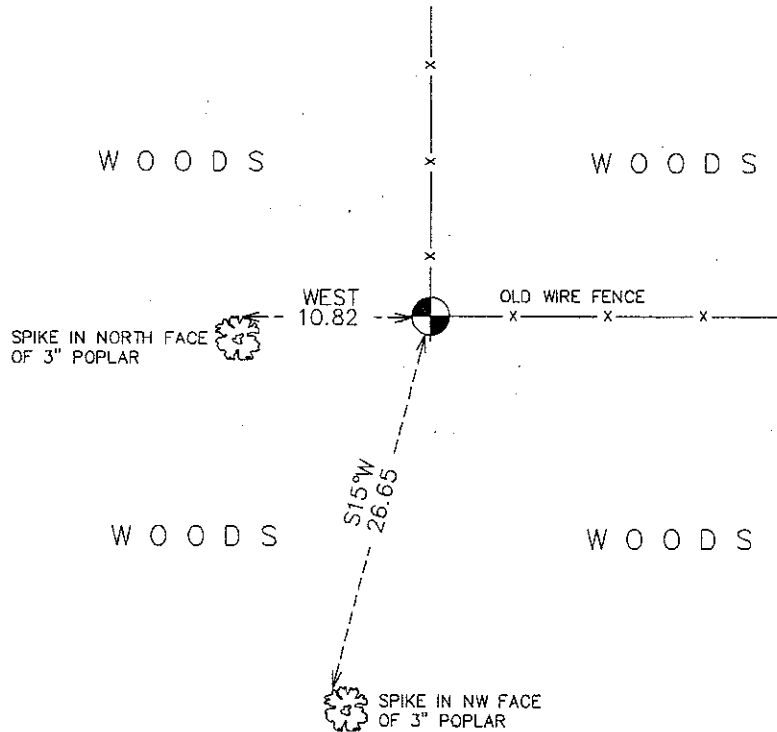
Northing= 104668.70

Easting= 348575.35

Note: NAD 1983, HARN 1996 Adjustment
coordinates are NOT compatible with
NAD 1983 coordinates

Note: 1 Meter=3937/1200 U.S. Survey Feet

SKETCH OF REFERENCE TIES



Statement of evidence relative to this corner location is on back of page.

I hereby certify that this document and the data contained herein was prepared by me or under my direct supervision.

Ernest J. Reed 12-21-2010
Signature Date

Registration No. 9808

Land Surveyor, [] Professional Engineer

[] County Surveyor, [] County Engineer

OFFICE OF THE COUNTY RECORDER

County of _____

I hereby certify that this document was filed in the County Recorder's office at _____ M. on the

_____ day of _____ A.D., 20____

County Recorder _____

BY _____ Deputy

DOCUMENT NO. _____

E1/4 CORNER, SEC. 31, T38, R25

STATEMENT OF EVIDENCE

THE ORIGINAL CORNER POST WAS SET BY U.S. DEPUTY SURVEYOR DANIEL HIGBEE ON NOV. 28, 1851 AND 2 BEARING TREES ESTABLISHED AS FOLLOWS:

8" TAMARACK BEARING N33.5°E @ 48 LINKS

8" TAMARACK BEARING S26°W @ 20 LINKS

NO INFORMATION ON SUBSEQUENT SURVEYS ALONG THIS LINE COULD BE FOUND AT THE KANABEC COUNTY OFFICES.

IN APRIL 2010, E,G, RUD AND SONS, INC. RAN A SURVEY AROUND SECS. 28-33 TO LOCATE MONUMENTATION, LINES OF OCCUPATION AND SEARCH AREAS. THIS CORNER FALLS AT AN OLD FENCE CORNER WITH FENCES RUNNING NORTH AND EAST. THIS FENCE CORNER IS 28 FEET NORTH AND 17 FEET EAST OF A LINE AND SPLIT.

THERE IS A ROAD OPENING ON FILE AT THE COUNTY AUDITOR'S OFFICE, DATED OCT. 1920, RUNNING FROM THE S1/4 CORNER TO THE N1/4 CORNER OF SEC. 31. NO SURVEY WAS DONE FOR THE ROAD. THERE IS A TOWNSHIP ROAD RUNNING FROM THE N1/4 TO THE CENTER OF SEC. 31, THENCE EASTERLY TO THE E1/4 CORNER. THE EAST-WEST PORTION OF THE ROAD FITS THE OLD FENCE CORNER. THEREFORE THE FENCE CORNER AND THE CENTERLINE OF THE ROADWAY WAS CONSIDERED TO BE THE BEST EVIDENCE FOR THE PERPETUATION OF THIS CORNER. A #7 REBAR WITH AN ALUMINUM CAP WAS SET, TIES WERE TAKEN AND KANABEC COUNTY COORDINATES WERE ESTABLISHED ON THIS POSITION.