

# CERTIFICATE OF LOCATION OF GOVERNMENT CORNER

E 1/4 Corner of Section 5, Township 38, Range 25, 4TH P.M.  
 STATE OF MINNESOTA, County of KANABEC

At the corner location shown on the sketch:  
 In July 2005 found a 1/2" x 17" leaning, reset iron pipe from ties.

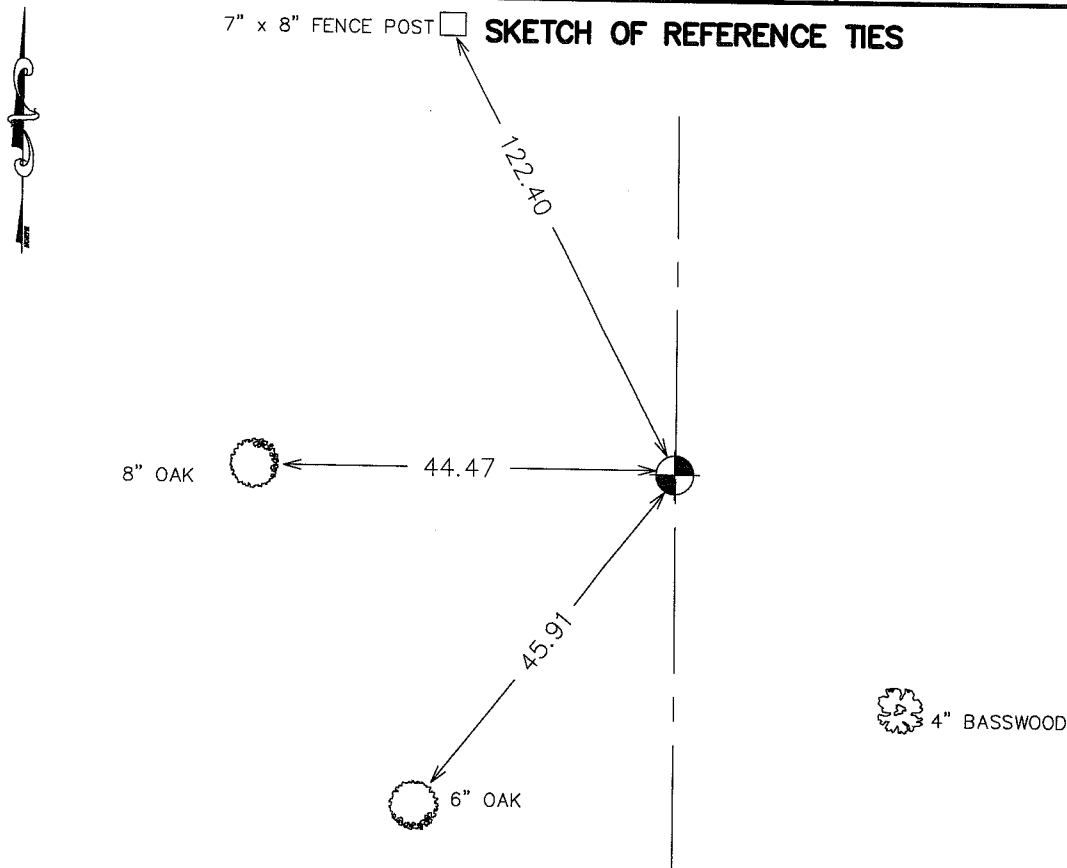
Kanabec County U.S. Survey Feet Coordinates  
 NAD 1983, HARN 1996 Adjustment  
 Obtained by RTK GPS Observation

Northing= 131148.43  
 Easting= 354018.04

Note: NAD 1983, HARN 1996 Adjustment  
 coordinates are NOT compatible with  
 NAD 1983 coordinates

Note: 1 Meter=3937/1200 U.S. Survey Feet

7" x 8" FENCE POST  **SKETCH OF REFERENCE TIES**



Statement of evidence relative to this corner location is on back of page.

I hereby certify that this document and the data contained herein was prepared by me or under my direct supervision.

Ernest Blud 9-19-05  
 Signature Date

Registration No. 9808

Land Surveyor,  Professional Engineer

County Surveyor,  County Engineer

## OFFICE OF THE COUNTY RECORDER

County of \_\_\_\_\_

I hereby certify that this document was filed in the County Recorder's office at \_\_\_\_\_ M. on the \_\_\_\_\_ day of \_\_\_\_\_ A.D., 20\_\_\_\_

County Recorder \_\_\_\_\_

BY \_\_\_\_\_ Deputy

BY \_\_\_\_\_ Deputy

**DOCUMENT NO.** \_\_\_\_\_

**STATEMENT OF EVIDENCE FROM TIE SHEET 918**

**STATEMENT OF EVIDENCE FROM TIE SHEET 327**

ON JULY 25, 1973, JOHN OLIVER, REGISTRATION NO. 8194, SET THIS CORNER AT A SINGLE PROPORTIONAL MEASUREMENT BETWEEN THE NORTHEAST AND SOUTHEAST CORNERS OF SECTION 5 AND FILED A CORNER LOCATION CERTIFICATE.

ON SEPTEMBER 26, 1994, M.B. RUDE FOUND THE MONUMENT SET BY JOHN OLIVER LEANING AND ALL THE REFERENCE TIES FROM 1972 WERE GONE.

M. B. RUDE RESET THIS CORNER BY SINGLE PROPORTIONAL MEASUREMENTS BETWEEN THE NORTHEAST AND SOUTHEAST CORNERS OF SECTION 5.

IN JULY 2005 WE LOCATED THIS CORNER CHECKED TIE INFORMATION AND TOOK ADDITIONAL TIES IF AVAILABLE AND ESTABLISHED KANABEC COUNTY COORDINATES ON THIS POSITION.