

CERTIFICATE OF LOCATION OF GOVERNMENT CORNER

NORTHEAST Corner of Section 8, Township 38, Range 25, 4TH P.M.

STATE OF MINNESOTA, County of KANABEC

At the corner location shown on the sketch:
In July 2005 found a 1/2" iron pipe.

Kanabec County U.S. Survey Feet Coordinates
NAD 1983, HARN 1996 Adjustment
Obtained by RTK GPS Observation

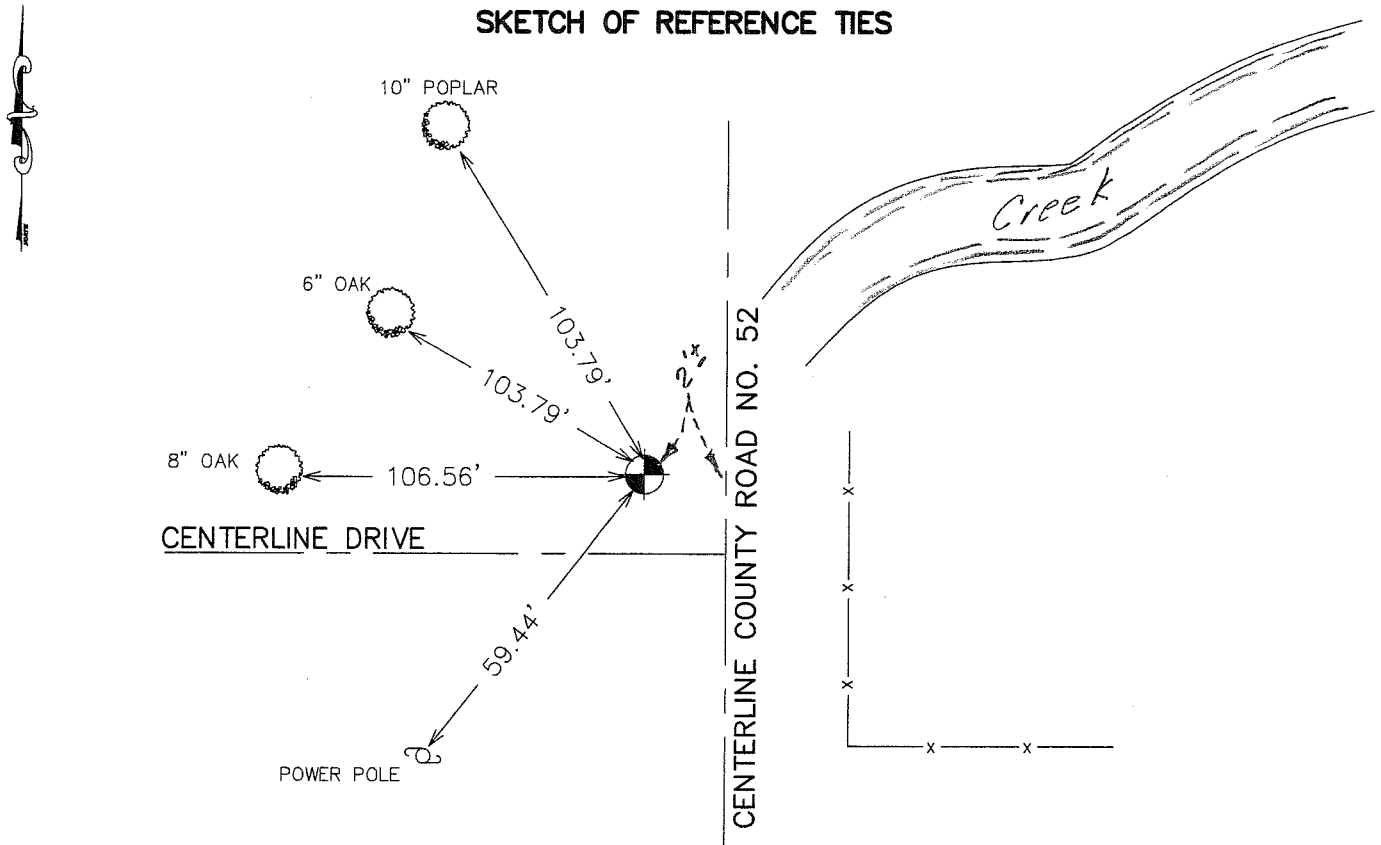
Northing= 128467.47

Easting= 353946.34

Note: NAD 1983, HARN 1996 Adjustment
coordinates are NOT compatible with
NAD 1983 coordinates

Note: 1 Meter=3937/1200 U.S. Survey Feet

SKETCH OF REFERENCE TIES



Statement of evidence relative to this corner location is on back of page.

I hereby certify that this document and the data contained herein was prepared by me or under my direct supervision.

Ernest L. Rud
Signature

9-16-2005
Date

Registration No. 9808

Land Surveyor, Professional Engineer

County Surveyor, County Engineer

OFFICE OF THE COUNTY RECORDER

County of _____

I hereby certify that this document was filed in the County Recorder's office at _____ M. on the _____ day of _____ A.D., 20 _____

County Recorder _____

BY _____ Deputy

BY _____ Deputy

DOCUMENT NO. _____

STATEMENT OF EVIDENCE FROM TIE SHEET 323

ON JULY 24, 1973, JOHN OLIVER, REGISTRATION NO. 8194, FOUND A STONE AT THIS CORNER AND SET A CAST ALUMINUM MONUMENT ON TOP OF THE STONE AND FILED A CORNER LOCATION CERTIFICATE.

ON SEPTEMBER 26, 1994 M. B. RUDE FOUND THE CAST ALUMINUM MONUMENT, PER THE CERTIFICATE ON FILE, AND SET A 1/2" IRON PIPE ON TOP OF THE MONUMENT AND MADE NEW REFERENCE TIES.

IN JULY 2005 WE FOUND THIS CORNER, CHECKED AND TOOK ADDITIONAL TIES IF AVAILABLE AND SET KANABEC COUNTY COORDINATES ON THIS POSITION.