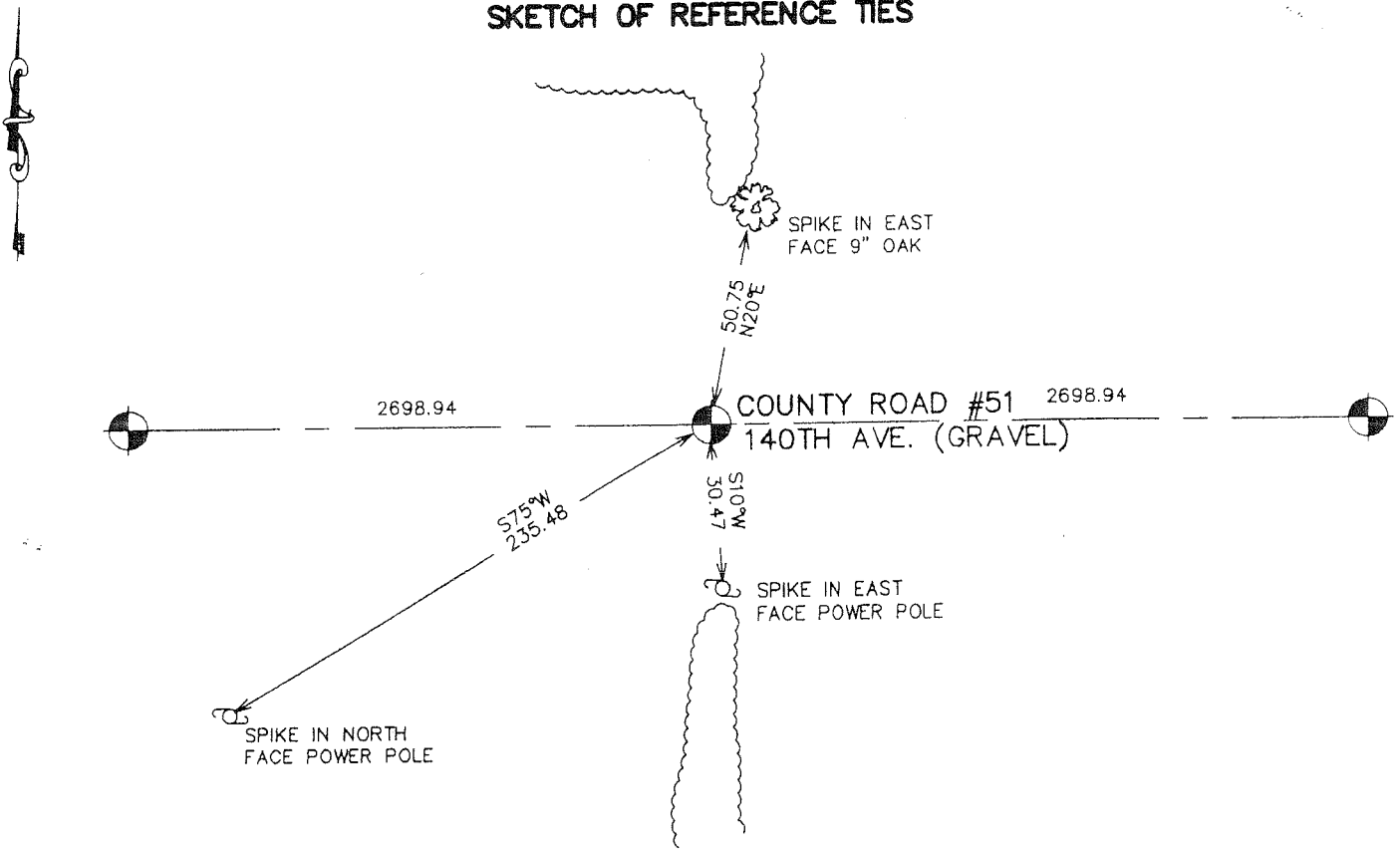


CERTIFICATE OF LOCATION OF GOVERNMENT CORNER

NORTH QUARTER Corner of Section 16, Township 38, Range 25, 4TH P.M.
STATE OF MINNESOTA, County of KANABEC

<p>At the corner location shown on the sketch: SET #7 REBAR AND ESTABLISHED G.P.S. COORDINATES ON ITS LOCATION.</p>	<p>Kanabec County U.S. Survey Feet Coordinates NAD 1983, HARN 1996 Adjustment Obtained by RTK GPS Observation</p> <p>Northing= 122955.17 Easting= 356552.94</p> <p>Note: NAD 1983, HARN 1996 Adjustment coordinates are NOT compatible with NAD 1983 coordinates Note: 1 Meter=3937/1200 U.S. Survey Feet</p>
---	---

SKETCH OF REFERENCE TIES



Statement of evidence relative to this corner location is on back of page.

I hereby certify that this document and the data contained herein was prepared by me or under my direct supervision.

Ernest Gud 10-12-2006
Signature Date

Registration No. Minn No 9808

Land Surveyor, Professional Engineer
 County Surveyor, County Engineer

OFFICE OF THE COUNTY RECORDER

County of _____

I hereby certify that this document was filed in the County Recorder's office at _____ M. on the _____ day of _____ A.D., 20____

County Recorder _____

BY _____ Deputy

DOCUMENT NO. _____

NORTH QUARTER CORNER SECTION 16, T38, R25

STATEMENT OF EVIDENCE

THE ORIGINAL CORNER WAS SET BY U.S. DEPUTY SURVEYOR DANIEL HIGBEE ON NOVEMBER 27, 1851. THE POST WAS SET A SUGAR MAPLE AND A BIRCH WERE NOTED AS BEARING TREES. NO VISIBLE EVIDENCE TO THE CORNER OF BEARING TREES REMAIN.

THERE IS A ROAD OPENING ON FILE AT THE COUNTY AUDITORS OFFICE DATED JULY 23, 1897. VICKEREY STATED HE SURVEYED THIS ROAD BUT DOESN'T STATE IF CORNERS WERE SET. NO OTHER RECORDS OF SUBSEQUENT SURVEYS COULD BE FOUND. IN AUGUST 2006 E.G. RUD AND SONS RAN A SURVEY AROUND SECTIONS 16-21 TO LOCATE EXISTING MONUMENTATION, TIE IN LINES OF OCCUPATION AND DETERMINE SEARCH AREAS. THIS CORNER FALLS ON THE CENTERLINE OF AN EAST-WEST GRAVEL ROAD AND OLD FENCE LINE RUNNING SOUTH AND A TREE LINE TO THE NORTH.

NO EXCAVATION WAS MADE AT THIS LOCATION AS THE ROAD WAS IN A CUT SECTION AND WE FELT ANY EVIDENCE TO THE CORNER WOULD HAVE BEEN DESTROYED BY THE ROAD CONSTRUCTION. THEREFORE WE SET THE CORNER ON LINE AND EQUIDISTANT FROM THE NORTHEAST TO NORTHWEST CORNER OF SECTION 16. THIS FELL 2' WEST OF THE FENCE AND ON CENTERLINE OF THE ROAD.

A #7 REBAR 24" LONG WAS SET WITH AN ALUMINUM CAP, TIES TAKEN AND KANABEC COUNTY COORDINATES ESTABLISHED USING G.P.S. EQUIPMENT.