

CERTIFICATE OF LOCATION OF GOVERNMENT CORNER

NORTHEAST Corner of Section 17, Township 38, Range 25, 4TH P.M.

STATE OF MINNESOTA, County of KANABEC

At the corner location shown on the sketch:

SET #7 REBAR WITH ALUMINUM CAP
AND ESTABLISHED G.P.S. COORDINATES ON ITS LOCATION.

Kanabec County U.S. Survey Feet Coordinates
NAD 1983, HARN 1996 Adjustment
Obtained by RTK GPS Observation

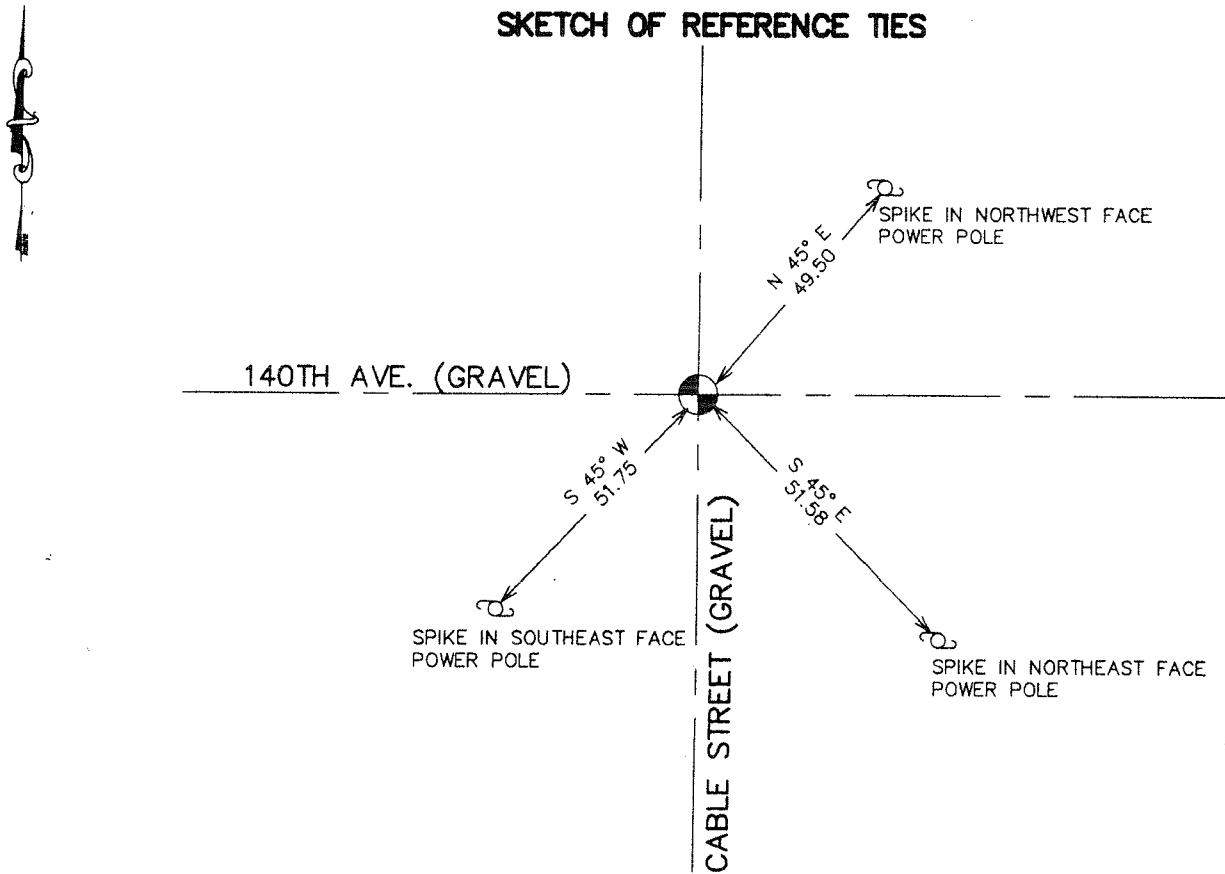
Northing= 123108.03

Easting= 353858.33

Note: NAD 1983, HARN 1996 Adjustment
coordinates are NOT compatible with
NAD 1983 coordinates

Note: 1 Meter=3937/1200 U.S. Survey Feet

SKETCH OF REFERENCE TIES



Statement of evidence relative to this corner location is on back of page.

I hereby certify that this document and the data contained herein was prepared by me or under my direct supervision.

Ernest Rud 11-1-2006
Signature Date

Registration No. Minn No 9008

Land Surveyor, Professional Engineer

County Surveyor, County Engineer

OFFICE OF THE COUNTY RECORDER

County of _____

I hereby certify that this document was filed in the County Recorder's office at _____ M. on the _____ day of _____ A.D., 20____

_____ day of _____ A.D., 20____

County Recorder _____

BY _____ Deputy

DOCUMENT NO. _____

NORTHEAST CORNER SECTION 17, T38, R25

STATEMENT OF EVIDENCE

THE ORIGINAL CORNER WAS SET BY DEPUTY SURVEYOR DANIEL HIGBEE IN DECEMBER 1851. NO VISIBLE EVIDENCE FOR THE CORNER OR BEARING TREES REMAIN. THERE IS A TOWN ROAD OPENING DATED JULY 23, 1897 ON FILE AT KANABEC COUNTY AUDITORS OFFICE. ROAD ORDER SHOWS VICKEREY SURVEYED THIS ROAD. NO OTHER RECORDS OF SUBSEQUENT SURVEYS COULD BE FOUND.

IN AUGUST 2006 E.G. RUD RAN A SURVEY AROUND SECTION 16, 17, AND 18 TO LOCATE EXISTING MONUMENTATION, TIE IN LINES OF OCCUPATION AND DETERMINE SEARCH AREAS. THIS CORNER FALLS AT THE INTERSECTION OF A NORTH-SOUTH GRAVEL ROAD WITH AN EAST-WEST GRAVEL ROAD.

ON SEPTEMBER 5TH, 2006 AN EXCAVATION WAS MADE WITH A BACKHOE AT THIS LOCATION. IT WAS 16' EAST-WEST, 8' NORTH-SOUTH AND 1 FOOT INTO NATURAL GROUND. A POINTED SANDSTONE WAS FOUND 6" EAST OF CENTERLINE AND 3' NORTH. NO OTHER EVIDENCE WAS FOUND IN THE EXCAVATION.

THEREFORE THE CENTERLINE - CENTERLINE INTERSECTION WAS ACCEPTED AS THE PERPETUATED LOCATION FOR THIS CORNER.

A # 7 REBAR WAS SET, TIES TAKEN AND KANABEC COUNTY COORDINATES ESTABLISHED USING G.P.S. EQUIPMENT.