

# CERTIFICATE OF LOCATION OF GOVERNMENT CORNER

EAST QUARTER Corner of Section 17, Township 38, Range 25, 4TH P.M.

STATE OF MINNESOTA, County of KANABEC

At the corner location shown on the sketch:

#7 REBAR WITH CAP SET  
AND ESTABLISHED G.P.S. COORDINATES ON ITS LOCATION.

Kanabec County U.S. Survey Feet Coordinates  
NAD 1983, HARN 1996 Adjustment  
Obtained by RTK GPS Observation

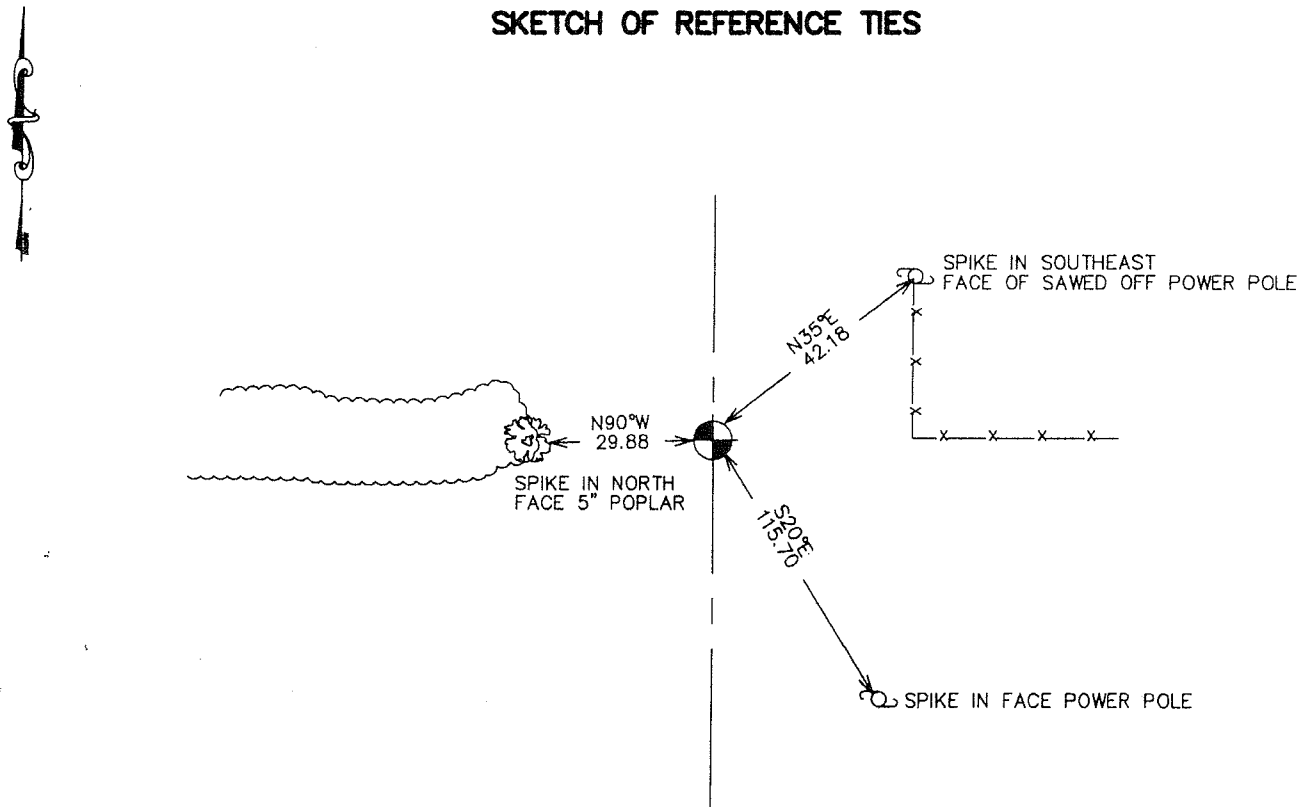
Northing= 120420.95

Easting= 353866.63

Note: NAD 1983, HARN 1996 Adjustment  
coordinates are NOT compatible with  
NAD 1983 coordinates

Note: 1 Meter=3937/1200 U.S. Survey Feet

## SKETCH OF REFERENCE TIES



Statement of evidence relative to this corner location is on back of page.

I hereby certify that this document and the data contained herein was prepared by me or under my direct supervision.

*Ernest Rud*  
Signature

9-28-2006  
Date

Registration No. Minn No 9808

Land Surveyor,       Professional Engineer

County Surveyor,       County Engineer

### OFFICE OF THE COUNTY RECORDER

County of \_\_\_\_\_

I hereby certify that this document was filed in the County Recorder's office at \_\_\_\_\_ M. on the \_\_\_\_\_ day of \_\_\_\_\_ A.D., 20\_\_\_\_

County Recorder \_\_\_\_\_

BY \_\_\_\_\_ Deputy

DOCUMENT NO. \_\_\_\_\_

## EAST QUARTER CORNER SECTION 17, T38, R25

### STATEMENT OF EVIDENCE

THE ORIGINAL CORNER WAS SET BY DEPUTY SURVEYOR DANIEL HIGBEE IN DECEMBER 1851. NO VISIBLE EVIDENCE REMAINS FOR THE CORNER OR BEARING TREES. THERE IS A ROAD OPENING ALONG THIS LINE ON FILE AT KANABEC COUNTY AUDITORS OFFICE. NO OTHER RECORDS FOR SUBSEQUENT SURVEYS COULD BE FOUND. THIS CORNER FALLS ON THE CENTERLINE OF A NORTH-SOUTH GRAVEL ROAD AND AN OLD FENCE RUNNING EAST-WEST. IN AUGUST 2006 E.G. RUD AND SONS RAN A SURVEY AROUND SECTIONS 16, 17 AND 18 TO LOCATE EXISTING MONUMENTATION, TIE IN OCCUPATION LINES AND DETERMINE SEARCH AREAS.

ON SEPTEMBER 5, 2006 AN EXCAVATION WAS MADE ON THE CENTERLINE OF THE ROAD AT THE FENCE INTERSECTIONS. THE EXCAVATION WAS 16' NORTH-SOUTH, 8' EAST-WEST AND 1 FOOT INTO NATURAL GROUND. JUST BELOW THE SURFACE A 1/2" X 14" IRON PIPE WAS FOUND. THE PIPE WAS TIED OUT AND EXCAVATION CONTINUED. NO OTHER EVIDENCE WAS FOUND IN THIS EXCAVATION. THEREFORE THE CORNER WAS SET BY LOST METHODS WHICH WAS ON LINE AND EQUIDISTANT BETWEEN THE NORTHEAST AND SOUTHEAST CORNERS OF SECTION 17. THIS WAS WITHIN 2' OF 1/2" IRON PIPE.

A #7 REBAR WAS SET WITH AN ALUMINUM CAP, TIES TAKEN AND KANABEC COUNTY COORDINATES TAKEN USING G.P.S. EQUIPMENT