

CERTIFICATE OF LOCATION OF GOVERNMENT CORNER

NORTH QUARTER CORNER OF SECTION 21, TOWNSHIP 38, RANGE 25, 4TH PM.
STATE OF MINNESOTA, COUNTY OF KANABEC

AT THE CORNER LOCATION SHOWN ON THE SKETCH:

ON 03/22/05 FOUND
KANABEC COUNTY MONUMENT

KANABEC COUNTY U.S. SURVEY
FEET COORDINATES
NAD 1983, HARN 1996
ADJUSTMENT OBTAINED BY RTK
GPS OBSERVATION

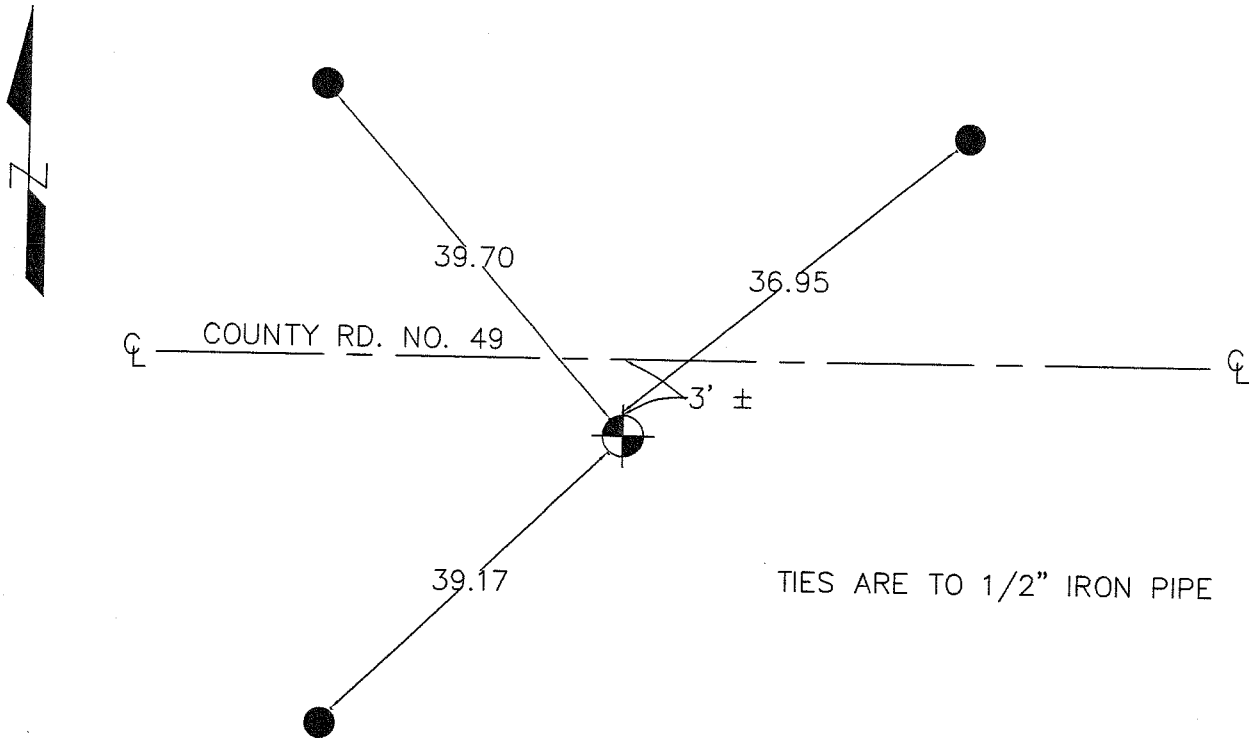
NORTHING= 117603.488

NOTE: NAD 1983, HARN 1996
ADJUSTMENT COORDINATES ARE
NOT COMPATIBLE WITH NAD 1983
COORDINATES

EASTING= 356548.332

NOTE: 1 METER= $\frac{3937}{1200}$ U.S. SURVEY FEET

SKETCH OF REFERENCE TIES



STATEMENT OF EVIDENCE RELATIVE TO THIS CORNER LOCATION IS ON THE BACK OF THIS PAGE

I HEREBY CERTIFY THAT THIS DOCUMENT AND THE DATA CONTAINED HEREIN WAS PREPARED BY ME OR UNDER MY DIRECT SUPERVISION.

Ernest Alred 11-18-2005
SIGNATURE DATE

REGISTRATION NO. Minn No 9808

- LAND SURVEYOR COUNTY SURVEYOR
 PROF. ENGINEER COUNTY ENGINEER

OFFICE OF THE COUNTY RECORDER

COUNTY OF _____

I HEREBY CERTIFY THAT THIS DOCUMENT WAS FILED IN THE COUNTY RECORDER'S OFFICE AT _____ M. ON THE _____ DAY OF _____, 2____.

COUNTY RECORDER _____

BY _____, DEPUTY

DOCUMENT NO. _____

STATEMENT OF EVIDENCE

From previous tie sheet:

All of the original government bearing trees are now gone.

In September of 1990, we made a survey around Section 21, Township 38, Range 25, to locate the existing monuments, lines of occupation and to establish search areas.

On September 27, 1990, we used a magnetic iron locator and found a 2- $\frac{1}{2}$ " by 36" iron pipe. We accepted the iron pipe as the perpetuated location of the original corner location.

On March 22, 2005, Rud's Land Surveying located this monument when doing a survey of Section 21. We established Kanabec County coordinates on this corner using GPS equipment.